

**ADDENDUM NO. 3 TO THE ENVIRONMENTAL IMPACT STATEMENT/
ENVIRONMENTAL IMPACT REPORT ON THE AMERICAN RIVER WATERSHED
COMMON FEATURES PROJECT/GENERAL REEVALUATION REPORT**

I. INTRODUCTION

This Addendum No. 3 to the Final Environmental Impact Statement/Environmental Impact Report for the American River Watershed Common Features Project/General Reevaluation Report ("ARCF GRR EIS/EIR" or "Project") (State Clearinghouse No. 2005072046) (USACE/CVFPB 2016) describes minor modifications and refinements to the Project description related to the acquisition of real property easements to provide future access, staging, haul routes, and habitat mitigation for construction activities to prevent erosion along the American River levees.

II. SUMMARY OF PREVIOUS ENVIRONMENTAL REVIEW PROCESS (AMERICAN RIVER WATERSHED COMMON FEATURES PROJECT/GENERAL REEVALUATION REPORT FINAL EIS/EIR)

The U.S. Army Corps of Engineers (USACE), Sacramento District, as lead agency under the National Environmental Policy Act (NEPA),¹ and the Central Valley Flood Protection Board (CVFPB), as lead agency under the California Environmental Quality Act (CEQA),² prepared a joint Environmental Impact Statement/Environmental Impact Report (EIS/EIR) for the ARCF-GRR, which was certified by the CVFPB on April 22, 2016. The December 2015 Final EIS/EIR was revised in May 2016 prior to issuance of a Record of Decision by the USACE approving the Project, which was analyzed as Alternative 2 (Improve Levees and Widen the Sacramento Weir and Bypass [Recommended Plan]) in the EIS/EIR. The Sacramento Area Flood Control Agency (SAFCA) was a cooperating agency for the EIS/EIR under NEPA and is a responsible agency under CEQA.

The Final EIS/EIR is available at SAFCA's offices at 1007 7th Street, 7th Floor, Sacramento, CA 95814, and online at SAFCA's Website:

http://www.safca.org/protection/Environmental_Public_Review.html.

The following is a list of relevant documents, incorporated herein by reference, consisting of previously analyzed and publicly circulated or generally available information:

February 2007. *Final Environmental Impact Report on Local Funding Mechanisms for Comprehensive Flood Control Improvements for the Sacramento Area*. State Clearinghouse No. 2006072098. Prepared by EDAW-AECOM for Sacramento Area Flood Control Agency (Local Funding EIR). (http://www.safca.org/protection/Environmental_Public_Review.html)

December 2015 (revised May 2016). *American River Watershed Common Features General Reevaluation Report, Final Environmental Impact Statement/Environmental Impact Report*. State Clearinghouse No. 2005072046. Prepared by USACE/CVFPB. (ARCF GRR EIS/EIR; ARCF 2016). (http://www.safca.org/protection/Environmental_Public_Review.html)

April 2016. *Final Subsequent Program Environmental Impact Report Updated Local Funding Mechanisms for Sacramento Area Flood Control Improvements*. State Clearinghouse No.

¹ NEPA is found at 42 U.S.C. § 4321 et seq

² CEQA is found at California Public Resources Code, Sections 21000 et seq., and the State CEQA Guidelines are found at California Code of Regulations, Title 14, Section 15000 et seq.

2006072098. Prepared by GEI, Consultants, Inc. (GEI) for Sacramento Area Flood Control Agency. (Updated Local Funding SEIR).

(http://www.safca.org/protection/Environmental_Public_Review.html)

December 2018. *American River Watershed Common Features 2016 (ARCF 2016) Project, Sacramento River, Reach D, Contract 1 Front Street Stability Berm Final Supplemental Environmental Assessment (EA)/Final Supplemental Initial Study (IS) and Mitigate Negative Declaration (MND)*. State Clearinghouse No. 2005072046. Prepared by USACE/CVFPB.

April 2019. *Addendum No. 1 to the Environmental Impact Statement/Environmental Impact Report on the American River Watershed Common Features Project/General Reevaluation Report*. Prepared by SAFCA.

(http://www.safca.org/protection/Environmental_Public_Review.html)

May 2019. *ARCF 2016 Project, Beach Stone Lakes Mitigation Site Supplemental EA/IS and MND*. State Clearinghouse No. 2005072046. Prepared by USACE/CVFPB.

September 2019. *Addendum No. 2 to the Environmental Impact Statement/Environmental Impact Report on the American River Watershed Common Features Project/General Reevaluation Report*. Prepared by SAFCA.

(http://www.safca.org/protection/Environmental_Public_Review.html)

November 2019. *Supplemental EA/EIR American River Watershed Common Features, Water Resources Development Act of 2016 (ARCF 2016) Project, Sacramento River East Levee Contract 1*. State Clearinghouse No. 2005072046. Prepared by GEI for USACE and CVFPB.

III. PROPOSED MODIFICATIONS AND REFINEMENTS TO THE PROJECT DESCRIPTION - NO NEW OR SUBSTANTIALLY MORE SEVERE SIGNIFICANT ENVIRONMENTAL IMPACTS

A. DESCRIPTION OF THE PROJECT IN THE ARCF GRR EIS/EIR

As more fully described in the ARCF GRR EIS/EIR, the Project involves the construction of fix-in-place levee remediation measures to address seepage, slope stability, erosion, and overtopping concerns identified for the American and Sacramento River, Natomas East Main Drainage Canal, Arcade Creek, Dry/Robla Creek, and Magpie Creek levees. Fix-in-place refers to constructing improvements to the levee in the levee's current configuration, as opposed to building a setback or adjacent levee. The Project also involves widening the Sacramento Weir and Bypass to divert more flow into the Yolo Bypass (ARCF GRR EIS/EIR p. 45). The ARCF GRR EIS/EIR disclosed that property will need to be acquired for the Project, and that all property acquisitions will be conducted in compliance with Federal and State relocation law (EIS/EIR p. 80). The Real Estate Plan for the Project, which is Appendix D to the ARCF GRR, identifies the real estate acquisition costs and acreages for the Project (ARCF GRR, Appendix D, pp. 12, 13, 38, and 39).

The ARCF GRR EIS/EIR identified that haul routes and access would be along existing public freeways and major surface streets to connect to local, minor arterials and connectors and could cross or disrupt recreational trails (ARCF GRR EIS/EIR, pp. 225 – 226). The ARCF GRR EIS/EIR identified that staging areas would be located along and within the Lower American River Parkway (Parkway), which includes the American River and the adjacent corridor beginning upstream at Nimbus Dam to the confluence with the Sacramento River.

The ARCF GRR EIS/EIR stated that habitat mitigation sites for valley elderberry longhorn beetle (VELB) could be located in the area near River Bend and Cal Expo and sites for Yellow-billed Cuckoo (YBCU) could be located anywhere within the Parkway (ARCF GRR EIS/EIR, pp. 181 and 189). However, since there is potential overlap between the habitat for both VELB and YBCU within the entire Parkway, the mitigation sites previously indicated for YBCU could also be designed to provide specific habitat required to support VELB within the Parkway (ARCF GRR EIS/EIR, pp. 181 and 189).

B. PROPOSED MODIFICATIONS AND REFINEMENTS TO THE PROJECT DESCRIPTION

This Addendum concerns modification and refinements to the description of the locations and sizes of the real property easements specifically related to access, staging, haul routes, and habitat mitigation for construction activities to prevent erosion along the American River levees as described below. This Addendum is necessary to refine the EIS/EIR's analysis of the acquisition of these easements now that their precise locations have been identified.

SAFCA would acquire easements on three parcels for the purpose of construction staging and access as shown on Figures 1 and Figure 2. SAFCA would acquire easements for sites designated for mitigation of impacts on VELB habitat (see Figure 3 and Figures 4a and 4b). Five easements would be acquired for future creation of VELB habitat, including access roads, temporary work area easements, a utility easement, and permanent access routes in the American River Parkway as shown on Figures 2a and 2b. The easements for VELB habitat mitigation areas would be permanent or temporary for a time period of approximately three to five years to establish mature vegetation.

Easements for construction staging and access would be temporary and could be used during the construction of levee erosion protection along the left bank and right bank of the American River. The construction staging areas and mitigation sites encompass three acres and 60 acres, respectively. The total acreage of real property easement acquisitions for the Project analyzed in the ARCF GRR EIS/EIR was 227.17 acres for staging areas and 318.5 acres for environmental mitigation (see ARCF GRR, Appendix D, pp. 23 and 27). The following lists the size of the easements and each of the corresponding individual parcels in the City of Sacramento and County of Sacramento:

1. 0.29-acre and 0.45-acre easements for construction staging and access on Scottish Rite Masonic Center at 6151H Street (Assessor's Parcel Number (APN) 005-0232-003)
2. 0.38-acre easement for construction staging and access on Central Sacramento Seventh-Day Adventist Church at 6045 Camellia Avenue (APN 005-0233-005)
3. 0.22-acre and 2.6-acre easements for access and haul routes, respectively, on California State University, Sacramento at 6000 J Street (APN 005-0010-012)
4. 1.39-acre easement for access and haul route on City of Sacramento at E.A. Fairbairn Water Treatment Plant (APN 005-0010-012)
5. 0.67-acre easement for construction staging on Paradise Beach, County of Sacramento in the American River Parkway (APN 005-0010-002)
6. 7.75-acre easement for VELB habitat mitigation on County of Sacramento in the American River Parkway (APN 005-0010-002)
7. 5.32-acre easement for access and VELB habitat mitigation on County of Sacramento in the

American River Parkway (APN 292-0190-028, -031, -032, -04, -044, -051, and 292-0210-008)

8. 2.44-acre easement for access and VELB habitat mitigation on County of Sacramento in the American River Parkway (APN 292-0220-019, -029, -049, and -052)

In addition, the Project would require coordination and agreements with the California State University – Sacramento (CSUS) and the City of Sacramento for easements for construction access and use of haul routes through the CSUS campus and E.A. Fairbairn water treatment plant, respectively, as shown on Figure 4.

While the specific locations identified in this addendum for temporary staging areas, access, mitigation sites, and haul routes were not included in the ARCF GRR EIS/EIR, as described below, these minor modifications and refinements do not involve substantial changes in the Project or surrounding circumstances or new information of substantial importance that would require major revisions of the previous EIS/EIR due to the involvement of new significant environmental impacts or a substantial increase in the severity of impacts evaluated in the prior ARCF GRR EIS/EIR (see ARCF GRR EIS/EIR, pp. 72 through 81 and ARCF GRR, Appendix D, pp. 23, 27, 28, and 33).

C. STANDARD FOR PREPARATION OF AN ADDENDUM

As described in State CEQA Guidelines Section 15162(a), when an EIR has been certified or negative declaration adopted for a project, no subsequent EIR shall be prepared for that project unless the lead agency determines, on the basis of substantial evidence in light of the whole record, that one or more of the following conditions is met:

- 1) Substantial changes are proposed in the project which will require major revisions of the previous EIR or negative declaration due to the involvement of new significant environmental effects or a substantial increase in the severity of previously identified significant effects;
- 2) Substantial changes occur with respect to the circumstances under which the project is undertaken which will require major revisions of the previous EIR or negative declaration due to the involvement of new significant environmental effects or a substantial increase in the severity of previously identified significant effects; or
- 3) New information of substantial importance, which was not known and could not have been known with the exercise of reasonable diligence at the time the previous EIR was certified or the negative declaration was adopted, shows any of the following:
 - a) The project will have one or more significant effects not discussed in the previous EIR or negative declaration;
 - b) Significant effects previously examined will be substantially more severe than shown in the previous EIR;
 - c) Mitigation measures or alternatives previously found not to be feasible would in fact be feasible, and would substantially reduce one or more significant effects of the project, but the project proponents decline to adopt the mitigation measure or alternative; or

- d) Mitigation measures or alternatives which are considerably different from those analyzed in the previous EIR would substantially reduce one or more significant effects on the environment, but the project proponents decline to adopt the mitigation measure or alternative.

State CEQA Guidelines Section 15164(a) states that a lead agency may prepare an addendum to a previously certified EIR if some changes or additions are necessary but none of the conditions described in Section 15162 calling for preparation of a subsequent EIR have occurred.

D. ANALYSIS OF IMPACTS RESULTING FROM THE PROPOSED MODIFICATIONS AND REFINEMENTS

This section of the Addendum analyzes the potential effects on the physical environment from implementing the proposed minor modifications and refinements to the Project description. This analysis has been prepared to determine whether any of the conditions in State CEQA Guidelines Section 15162 would occur as a result of the proposed minor modifications and refinements. The minor modifications and refinements described above would not cause any new significant or potentially significant impacts or a substantial increase in the severity of the impacts analyzed and disclosed in the ARCF GRR EIS/EIR for the following topic areas, because the activities associated with the proposed minor modifications and refinements would result in no increase or a negligible increase in the impacts identified in the ARCF GRR EIS/EIR:

- Geological Resources
- Hydrology and Hydraulics
- Water Quality and Groundwater Resources
- Vegetation and Wildlife
- Fisheries
- Special Status Species
- Cultural Resources
- Transportation and Circulation
- Air Quality
- Climate Change
- Noise
- Recreation
- Visual Resources
- Public Utilities and Service Systems
- Hazardous Wastes and Materials
- Socioeconomic, Population, and Environmental Justice

The modifications and refinements do not involve substantial changes in the Project or the surrounding circumstances or new information of substantial importance regarding new significant environmental effects and would not result in any new significant environmental impacts or a substantial increase in the severity of environmental effects evaluated in the ARCF GRR EIS/EIR. This is because acquisition of easements for access, staging, haul routes, and mitigation sites was described and analyzed in the ARCF GRR EIS/EIR (pp. 72 through 81 and ARCF GRR Appendix D, pp. 23, 27, 28, and 33). Although acquisition of easements on the precise parcels listed in this addendum was not specifically described in the ARCF GRR EIS/EIR, the effects of acquiring easements on these parcels would be the same as the effects evaluated in the ARCF GRR EIS/EIR because the easements are either included in the same geographic areas studied in the EIS/EIR or,

for the easements not located in those areas, the properties do not have any meaningful differences in terms of the resources analyzed in the EIS/EIR (such as land uses, biological resources, proximity to sensitive receptors, transportation, visual resources, and recreation) that would alter the analysis of impacts in the EIS/EIR. As stated in the ARCG GRR EIS/EIR on page 77, “All property acquisitions would be conducted in compliance with Federal and State relocation law, and relocation services would be accomplished in accordance with the Uniform Relocation Assistance and Real Property Acquisition Policies Act of 1960. These laws require that appropriate compensation be provided to displaced residential and nonresidential landowners and tenants, and that residents are relocated to comparable replacement housing and receive relocation assistance. This law applies to farms and businesses if they would be displaced for any length of time. With compliance with these relocation laws, and appropriate compensation to impacted landowners, this effect would be less than significant.” The same would apply to the easements in this Addendum, resulting in the same less-than-significant impact conclusion that was reached in the ARCF GRR EIS/EIR.

E. CONCLUSION REGARDING PREPARATION OF AN ADDENDUM

State CEQA Guidelines Section 15164 states that a lead agency may prepare an Addendum to a certified EIR if some changes or additions are necessary, but none of the conditions described in Sections 15162 or 15163 calling for the preparation of a subsequent or supplemental EIR have occurred. As described in the preceding sections, the minor modifications and refinements to the description of the Project, as described in this Addendum, would not result in any of the conditions described in Section 15162 of the CEQA Guidelines calling for the preparation of a Subsequent or Supplemental EIR. In summary, the proposed minor modifications and refinements to the Project description would not:

- result in any new significant or potentially significant environmental effects,
- substantially increase the intensity or severity of previous identified effects,
- result in mitigation measures or alternative previously found to be infeasible becoming feasible, or
- result in availability/implementation of mitigation measures or alternatives that are considerably different from those analyzed in the prior EIR that would substantially reduce one or more significant or potentially significant effects on the physical environment.

These conclusions confirm that a subsequent or supplemental EIR is not required, and this Addendum to the ARCF GRR EIS/EIR pursuant to State CEQA Guidelines Section 15164 is appropriate to evaluate and document the proposed minor modifications and refinements to the Project description. No changes are needed to the certified EIR or the adopted Mitigation Monitoring and Reporting Plan for the Project.

IV. REFERENCES

December 2015 (revised May 2016). *American River Watershed Common Features General Reevaluation Report, Final Environmental Impact Statement/Environmental Impact Report*. State Clearinghouse No. 2005072046. Prepared by USACE/CVFPB. (ARCF GRR EIS/EIR; ARCF 2016).

December 2015. *American River Watershed Common Features General Reevaluation Report*. Prepared by USACE.

1218861.2



SOURCE: USDA, 2018; NHC, 2019; ESA, 2020

American River Common Features Contract 1

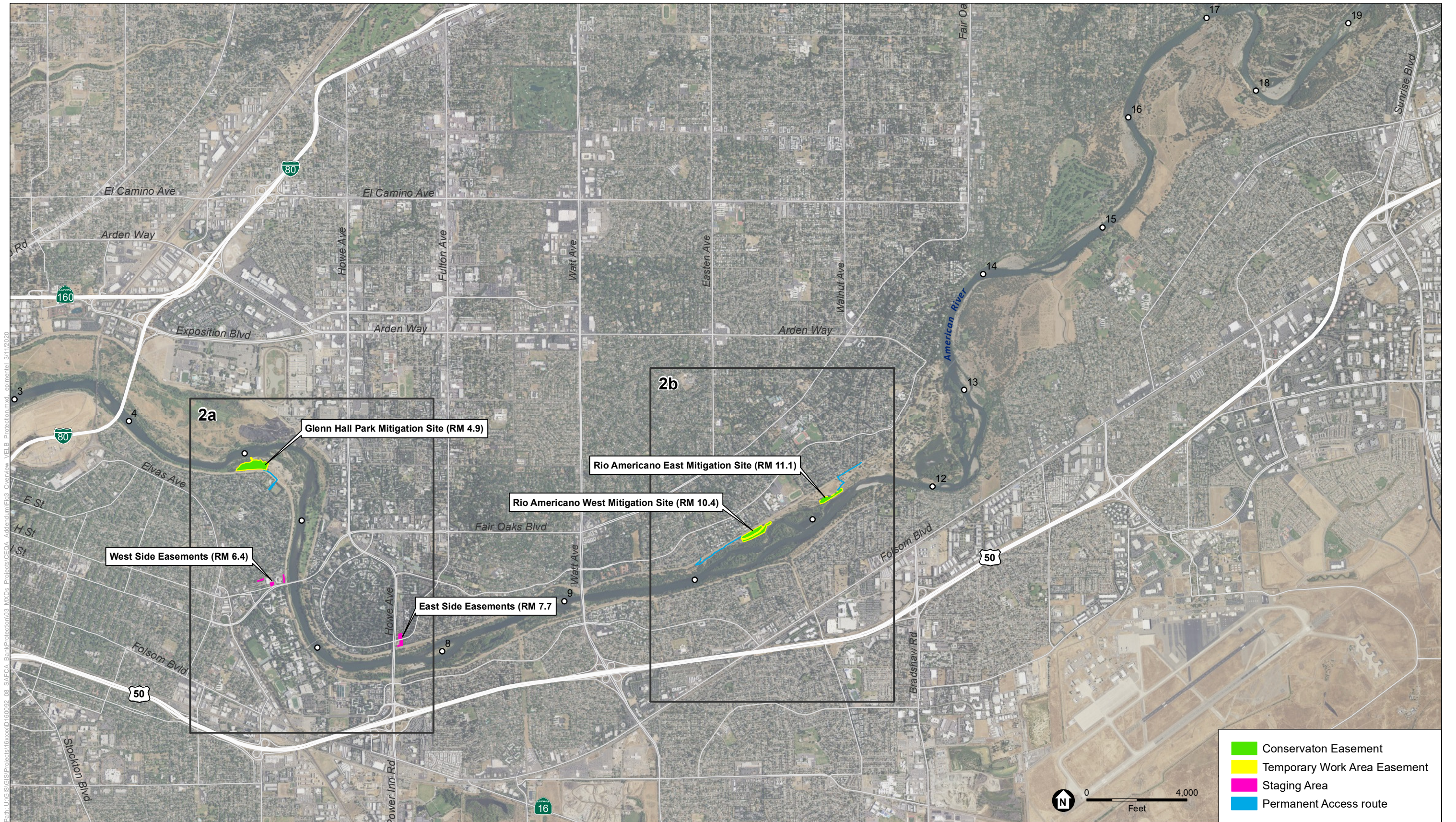
Figure 1
Easements on West Side of American River



SOURCE: USDA, 2018; NHC, 2019; ESA, 2020

American River Common Features Contract 1

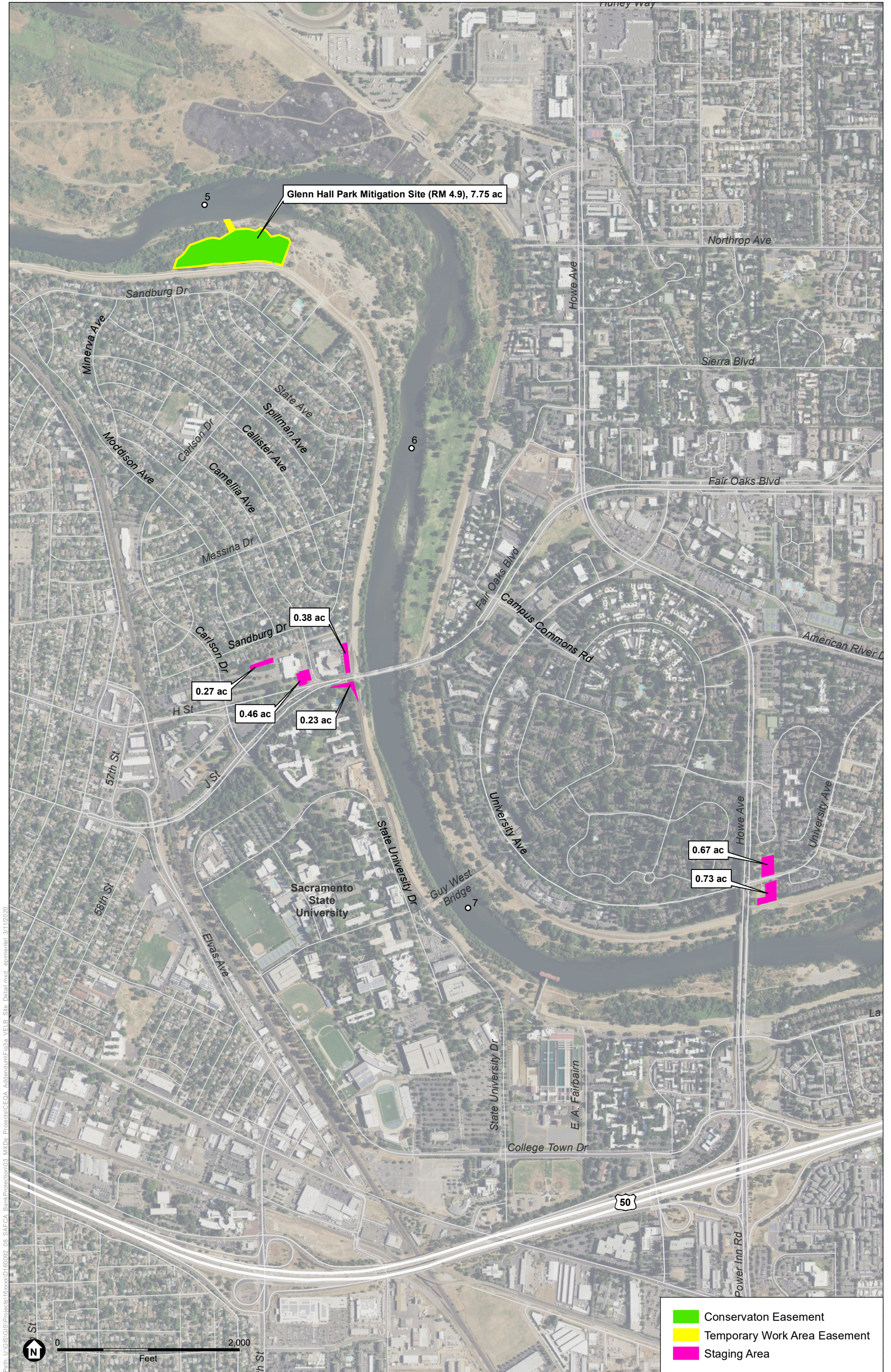
Figure 2
Easements on East Side of American River



SOURCE: DigitalGlobe, 2018; NHC, 2019; USACE, 2020; ESA, 2020

American River Common Features 2016 Contracts 1 & 2

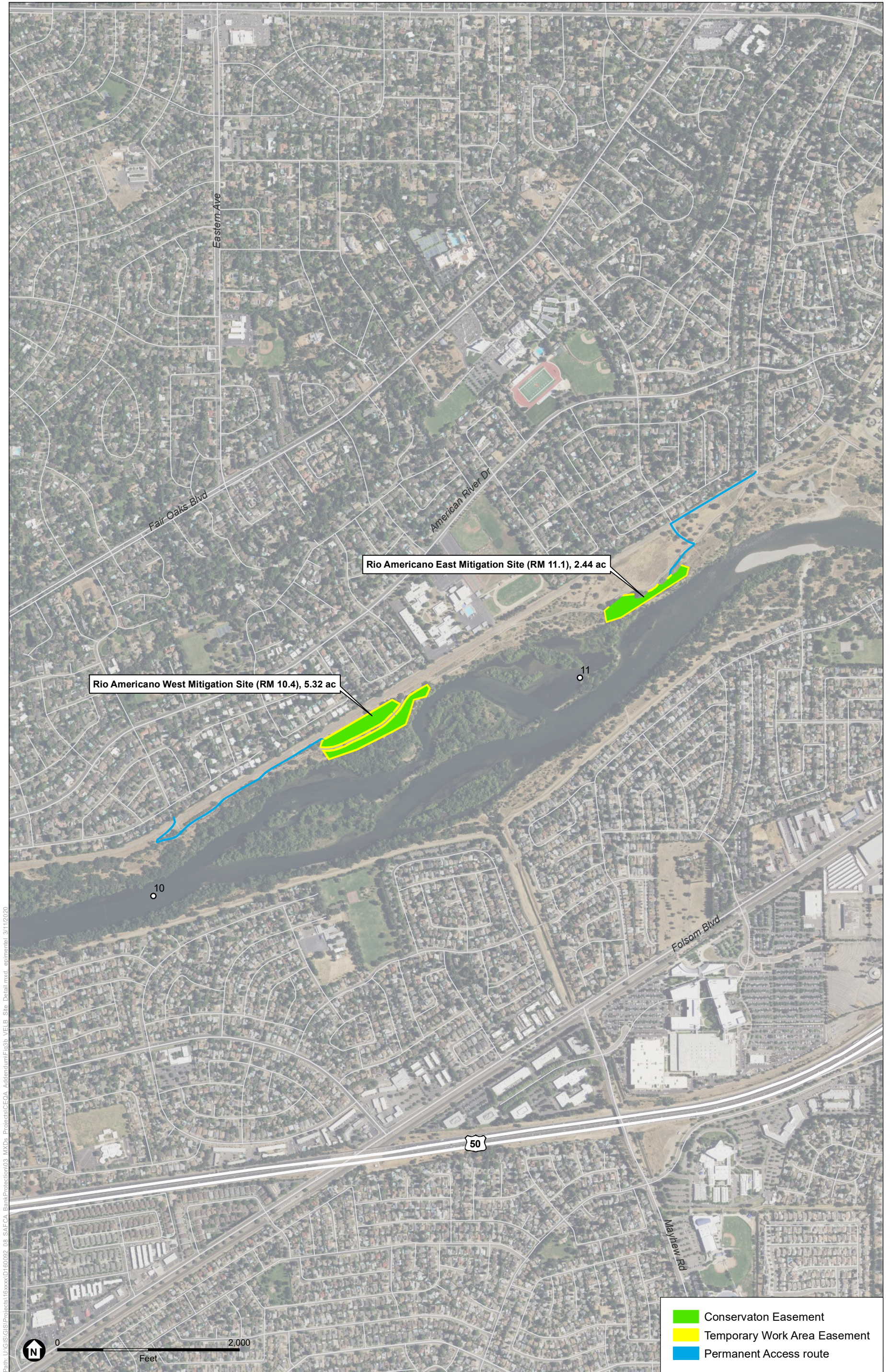
Figure 3
Easements and Mitigation Sites



SOURCE: USDA, 2018; NHC, 2019; ESA, 2020

American River Common Features Contract 1

Figure 3a
VELB Site Detail
Glen Hall

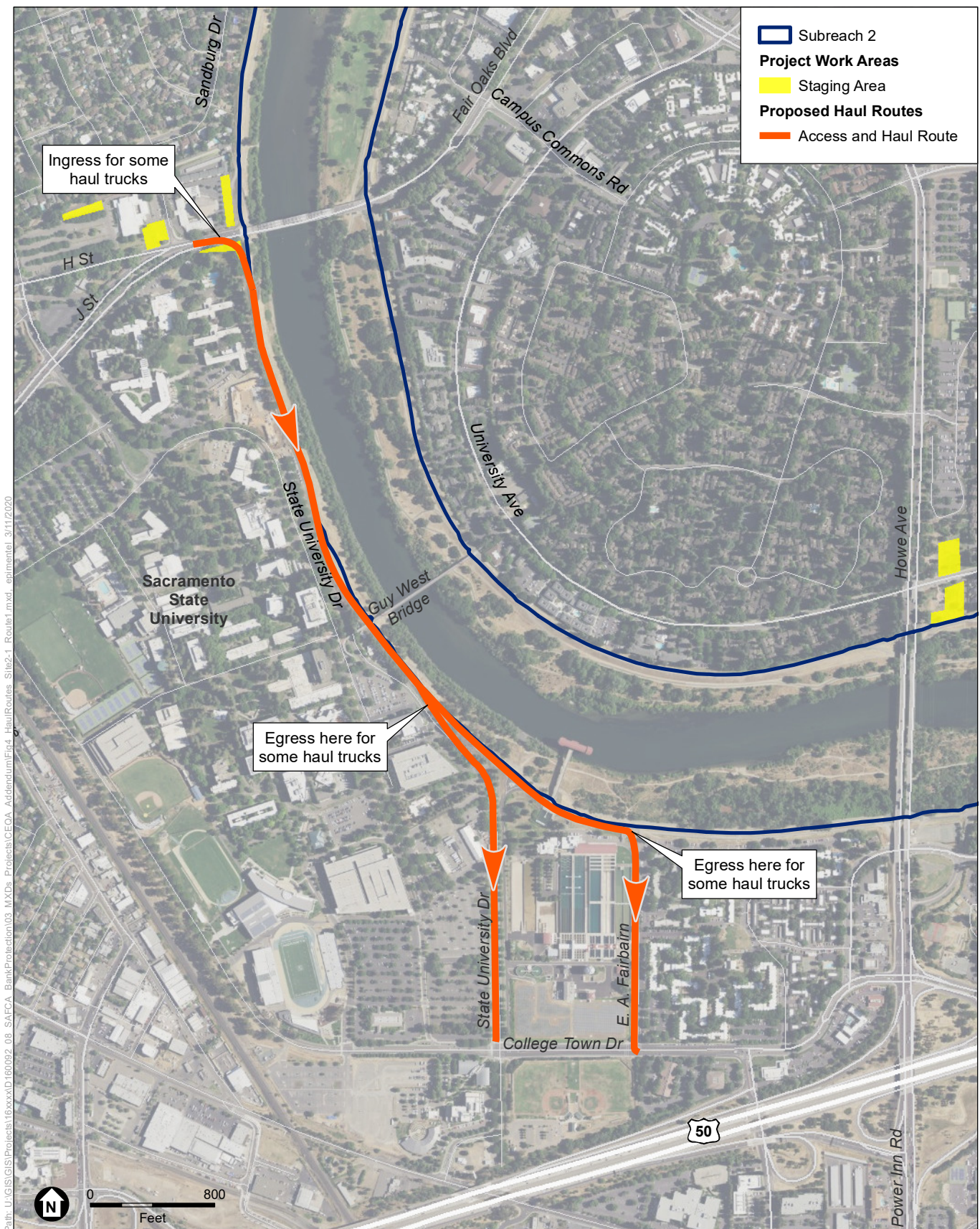


SOURCE: USDA, 2018; NHC, 2019; ESA, 2020

American River Common Features Contract 1

Figure 3b
VELB Site Detail
Rio Americano





SOURCE: USDA, 2018; NHC, 2019; ESA, 2020

American River Common Features Contract 1

Figure 4
Access and Haul Routes not Previously
Disclosed in the GRR EIS/EIR