



Federal Emergency Management Agency
Washington, D.C. 20472

**LETTER OF MAP REVISION
DETERMINATION DOCUMENT**

COMMUNITY AND REVISION INFORMATION		PROJECT DESCRIPTION	BASIS OF REQUEST
COMMUNITY	Sacramento County California (Unincorporated Areas)	NO PROJECT	MAP UPDATE
	COMMUNITY NO.: 060262		
IDENTIFIER	Mayhew Drain Levee LOMR	APPROXIMATE LATITUDE & LONGITUDE: 38.574, -121.354 SOURCE: USGS QUADRANGLE DATUM: NAD 83	
ANNOTATED MAPPING ENCLOSURES		ANNOTATED STUDY ENCLOSURES	
TYPE: FIRM* NO.: 0602620205E DATE: July 6, 1998		NO REVISION TO THE FLOOD INSURANCE STUDY REPORT	

Enclosures reflect changes to flooding sources affected by this revision.
* FIRM - Flood Insurance Rate Map

FLOODING SOURCE(S) & REVISED REACH(ES)

Mayhew Drain - from the confluence with the American River to just downstream of Folsom Boulevard.
Mayhew Drain Overflows - an area bounded by Folsom Boulevard to the south; Rio Bravo Circle and Mira Del Rio Drive to the north; Whitewater Way to the west; and Appalachian Drive to the east.

SUMMARY OF REVISIONS

This Letter of Map Revision (LOMR) is an update to a LOMR that will become effective on December 16, 2010 (Case No. 10-09-1947P), and revises the Special Flood Hazard Area (SFHA), the area subject to inundation by the base (1-percent-annual-chance) flood, and Base Flood Elevations (BFEs) along Mayhew Drain and Mayhew Drain Overflows. This LOMR adds an SFHA designated Zone A along Mayhew Drain that was inadvertently omitted from the previous LOMR. This LOMR also updates the levee symbols along the American River. This LOMR does not revise the SFHAs and BFEs from the December 16 LOMR along the Mayhew Drain Overflows.

DETERMINATION

This document provides the determination from the Department of Homeland Security's Federal Emergency Management Agency (FEMA) regarding a request for a Letter of Map Revision (LOMR) for the area described above. Using the information submitted, we have determined that a revision to the flood hazards depicted in the Flood Insurance Study (FIS) report and/or National Flood Insurance Program (NFIP) map is warranted. This document revises the effective NFIP map, as indicated in the attached documentation. Please use the enclosed annotated map panels revised by this LOMR for floodplain management purposes and for all flood insurance policies and renewals in your community.

This determination is based on the flood data presently available. The enclosed documents provide additional information regarding this determination. If you have any questions about this document, please contact the FEMA Map Information eXchange (FMIX) toll free at 1-877-336-2627 (1-877-FEMA MAP) or by letter addressed to the LOMC Clearinghouse, 7390 Coca Cola Drive, Suite 204, Hanover, MD 21076. Additional Information about the NFIP is available on our website at <http://www.fema.gov/nfip>.

Beth A Norton

Beth A. Norton, Program Specialist
Engineering Management Branch
Mitigation Directorate



Federal Emergency Management Agency

Washington, D.C. 20472

LETTER OF MAP REVISION DETERMINATION DOCUMENT (CONTINUED)

COMMUNITY INFORMATION

APPLICABLE NFIP REGULATIONS/COMMUNITY OBLIGATION

We have made this determination pursuant to Section 206 of the Flood Disaster Protection Act of 1973 (P.L. 93-234) and in accordance with the National Flood Insurance Act of 1968, as amended (Title XIII of the Housing and Urban Development Act of 1968, P.L. 90-448), 42 U.S.C. 4001-4128, and 44 CFR Part 65. Pursuant to Section 1361 of the National Flood Insurance Act of 1968, as amended, communities participating in the NFIP are required to adopt and enforce floodplain management regulations that meet or exceed NFIP criteria. These criteria, including adoption of the FIS report and FIRM, and the modifications made by this LOMR, are the minimum requirements for continued NFIP participation and do not supersede more stringent State or local requirements to which the regulations apply.

COMMUNITY REMINDERS

We based this determination on the 1-percent-annual-chance flood discharges computed in the FIS for your community without considering subsequent changes in watershed characteristics that could increase flood discharges. Future development of projects upstream could cause increased flood discharges, which could cause increased flood hazards. A comprehensive restudy of your community's flood hazards would consider the cumulative effects of development on flood discharges subsequent to the publication of the FIS report for your community and could, therefore, establish greater flood hazards in this area.

Your community must regulate all proposed floodplain development and ensure that permits required by Federal and/or State law have been obtained. State or community officials, based on knowledge of local conditions and in the interest of safety, may set higher standards for construction or may limit development in floodplain areas. If your State or community has adopted more restrictive or comprehensive floodplain management criteria, those criteria take precedence over the minimum NFIP requirements.

We will not print and distribute this LOMR to primary users, such as local insurance agents or mortgage lenders; instead, the community will serve as a repository for the new data. We encourage you to disseminate the information in this LOMR by preparing a news release for publication in your community's newspaper that describes the revision and explains how your community will provide the data and help interpret the NFIP maps. In that way, interested persons, such as property owners, insurance agents, and mortgage lenders can benefit from the information.

This determination is based on the flood data presently available. The enclosed documents provide additional information regarding this determination. If you have any questions about this document, please contact the FEMA Map Information eXchange (FMIX) toll free at 1-877-336-2627 (1-877-FEMA MAP) or by letter addressed to the LOMC Clearinghouse, 7390 Coca Cola Drive, Suite 204, Hanover, MD 21076. Additional Information about the NFIP is available on our website at <http://www.fema.gov/nfip>.

Beth A. Norton

Beth A. Norton, Program Specialist
Engineering Management Branch
Mitigation Directorate



Federal Emergency Management Agency

Washington, D.C. 20472

LETTER OF MAP REVISION DETERMINATION DOCUMENT (CONTINUED)

We have designated a Consultation Coordination Officer (CCO) to assist your community. The CCO will be the primary liaison between your community and FEMA. For information regarding your CCO, please contact:

Ms. Sally M. Ziolkowski
Director, Mitigation Division
Federal Emergency Management Agency, Region IX
1111 Broadway Street, Suite 1200
Oakland, CA 94607-4052
(510) 627-7175

STATUS OF THE COMMUNITY NFIP MAPS

We are processing a revised FIRM and FIS report for Sacramento County in our countywide format; therefore, we will not physically revise and republish the FIRM for your community to incorporate the modifications made by this LOMR at this time. Preliminary copies of the countywide FIRM and FIS report, which present information from the effective FIRMs and FIS reports for your community and other incorporated communities in Sacramento County, were submitted to your community for review on August 31, 2010. We will incorporate the modifications made by this LOMR into the countywide FIRM before it becomes effective.

This determination is based on the flood data presently available. The enclosed documents provide additional information regarding this determination. If you have any questions about this document, please contact the FEMA Map Information eXchange (FMIX) toll free at 1-877-336-2627 (1-877-FEMA MAP) or by letter addressed to the LOMC Clearinghouse, 7390 Coca Cola Drive, Suite 204, Hanover, MD 21076. Additional Information about the NFIP is available on our website at <http://www.fema.gov/nfip>.

Beth A Norton

Beth A. Norton, Program Specialist
Engineering Management Branch
Mitigation Directorate



Federal Emergency Management Agency
Washington, D.C. 20472

**LETTER OF MAP REVISION
DETERMINATION DOCUMENT (CONTINUED)**

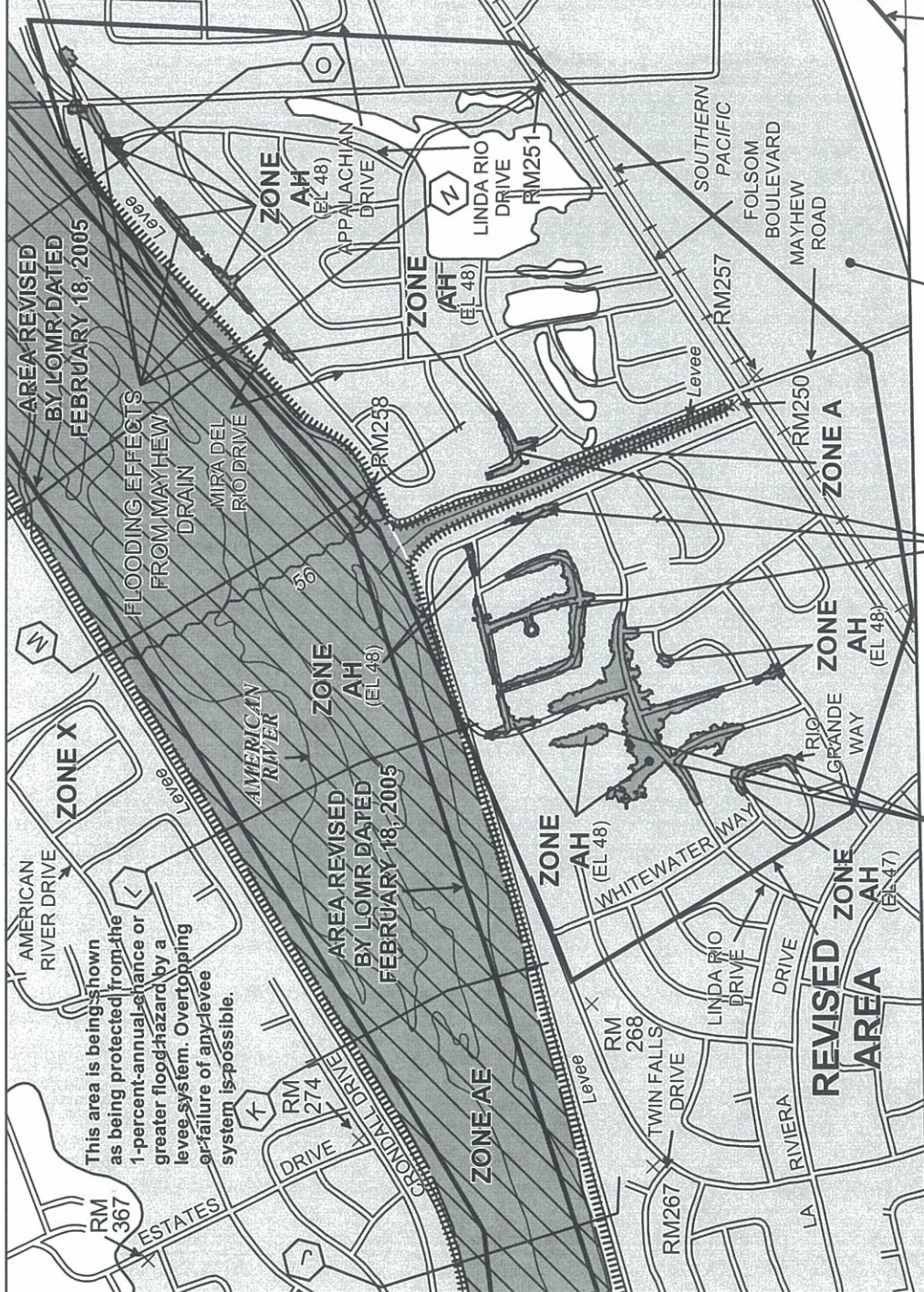
COMMUNITY INFORMATION (CONTINUED)

This LOMR is an update to a LOMR for your community that will become effective on December 16, 2010 (Case No. 10-09-1947P). A notice of BFE changes for the December 16, LOMR was published in your local newspaper (*The Sacramento Bee*) on August 11 and August 18, 2010, and a subsequent 90-day appeal period was provided; therefore no BFE changes are being published for this revision. This revision will become effective on December 17, 2010, and will supersede the December 16 LOMR.

This determination is based on the flood data presently available. The enclosed documents provide additional information regarding this determination. If you have any questions about this document, please contact the FEMA Map Information eXchange (FMIX) toll free at 1-877-336-2627 (1-877-FEMA MAP) or by letter addressed to the LOMC Clearinghouse, 7390 Coca Cola Drive, Suite 204, Hanover, MD 21076. Additional Information about the NFIP is available on our website at <http://www.fema.gov/nfip>.

Beth A. Norton

Beth A. Norton, Program Specialist
Engineering Management Branch
Mitigation Directorate



AREA REVISED BY LOMR DATED FEBRUARY 18, 2005

This area is being shown as being protected from the 1-percent-annual-chance or greater flood hazard by a levee system. Overtopping or failure of any levee system is possible.

AREA REVISED BY LOMR DATED FEBRUARY 18, 2005

FLOODING EFFECTS FROM MAYHEW DRAIN

JOINS PANEL 0215

FLOODING EFFECTS FROM MAYHEW DRAIN

Legend

- 1% annual chance (100-Year) Floodplain
- 1% annual chance (100-Year) Floodway
- 0.2% annual chance (500-Year) Floodplain



NATIONAL FLOOD INSURANCE PROGRAM

FIRM
FLOOD INSURANCE RATE MAP

SACRAMENTO COUNTY,
CALIFORNIA
(UNINCORPORATED AREAS)

PANEL 205 OF 705
(SEE MAP INDEX FOR PANELS NOT PRINTED)

REVISED TO REFLECT LOMR EFFECTIVE: December 17, 2010

COMMUNITY-PANEL NUMBER
060262 0205 E

MAP REVISED:
JULY 6, 1998

Federal Emergency Management Agency