

Natomas Levee Improvement Program

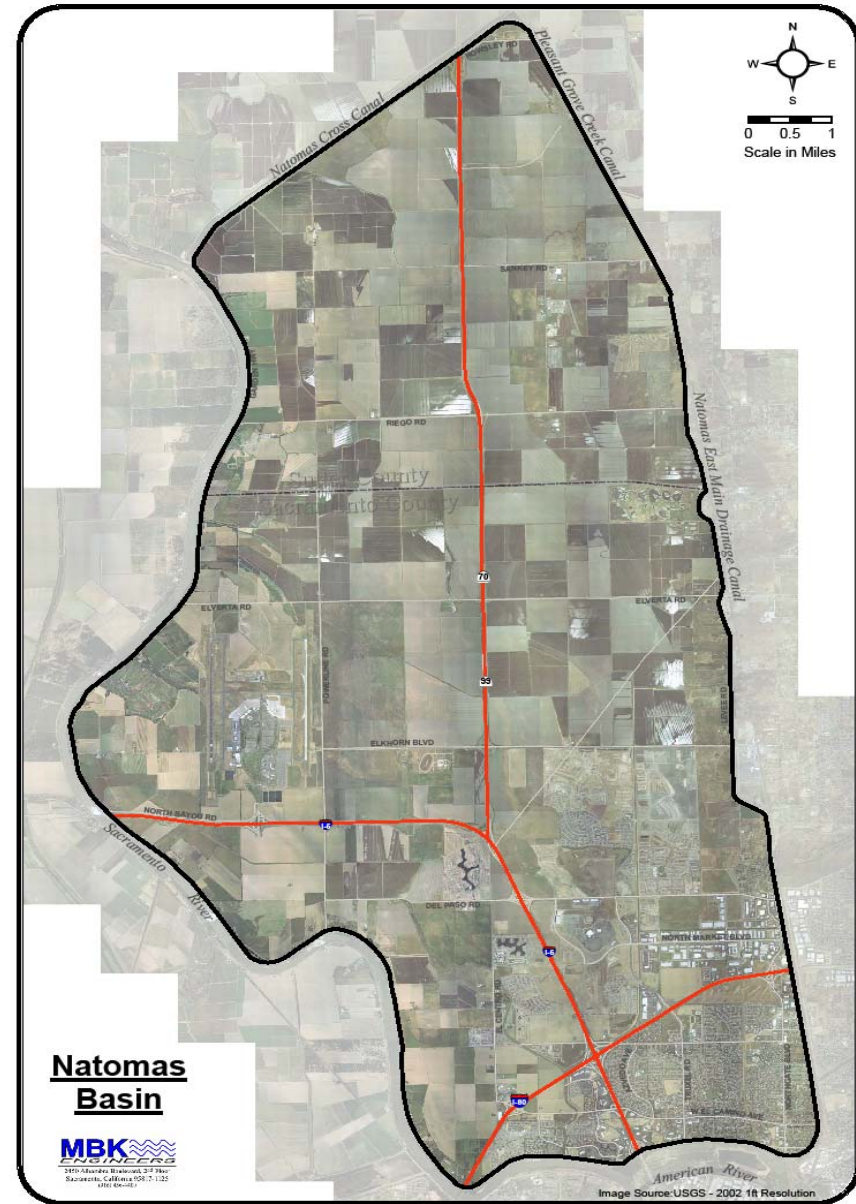
Summary

Existing Community at Risk

- 70,000+ Residents
- 22,000 Residential, 390 Commercial and 180 Industrial structures
- Sacramento International Airport
- Interstate 5 & 80 and Highway 99/70
- Over \$8 Billion in damageable property

Next Steps

- SAFCA Right of Way Acquisition
- SAFCA Preparation of Plans and Specifications
- Reclamation Board Encroachment Permit and Corps Section 408 Request
- California DWR Request for Section 104 Credit from Corps/ASA
- Corps EIS to support Section 104, 404 and 408 decisions
- ESA Section 7 Consultation Process
- SAFCA Development Fee Program
- California DWR-SAFCA Cost Sharing Agreement
- SAFCA Sale of Construction Bonds
- All Permits and Approvals, ROW Acquisition completed
- SAFCA Advertise Contracts, Open Bids, Award, Construct 2008 Projects
- SAFCA-Corps Initiate Joint EIR/EIS for 2009-2010 Construction



**Natomas
Basin**

MBK
ENGINEERS
2470 Ardenway Boulevard, 24th Floor
Sacramento, California 95817-1125
www.mbk.com

American River
Image Source: USGS - 2002 1ft Resolution

Questions?