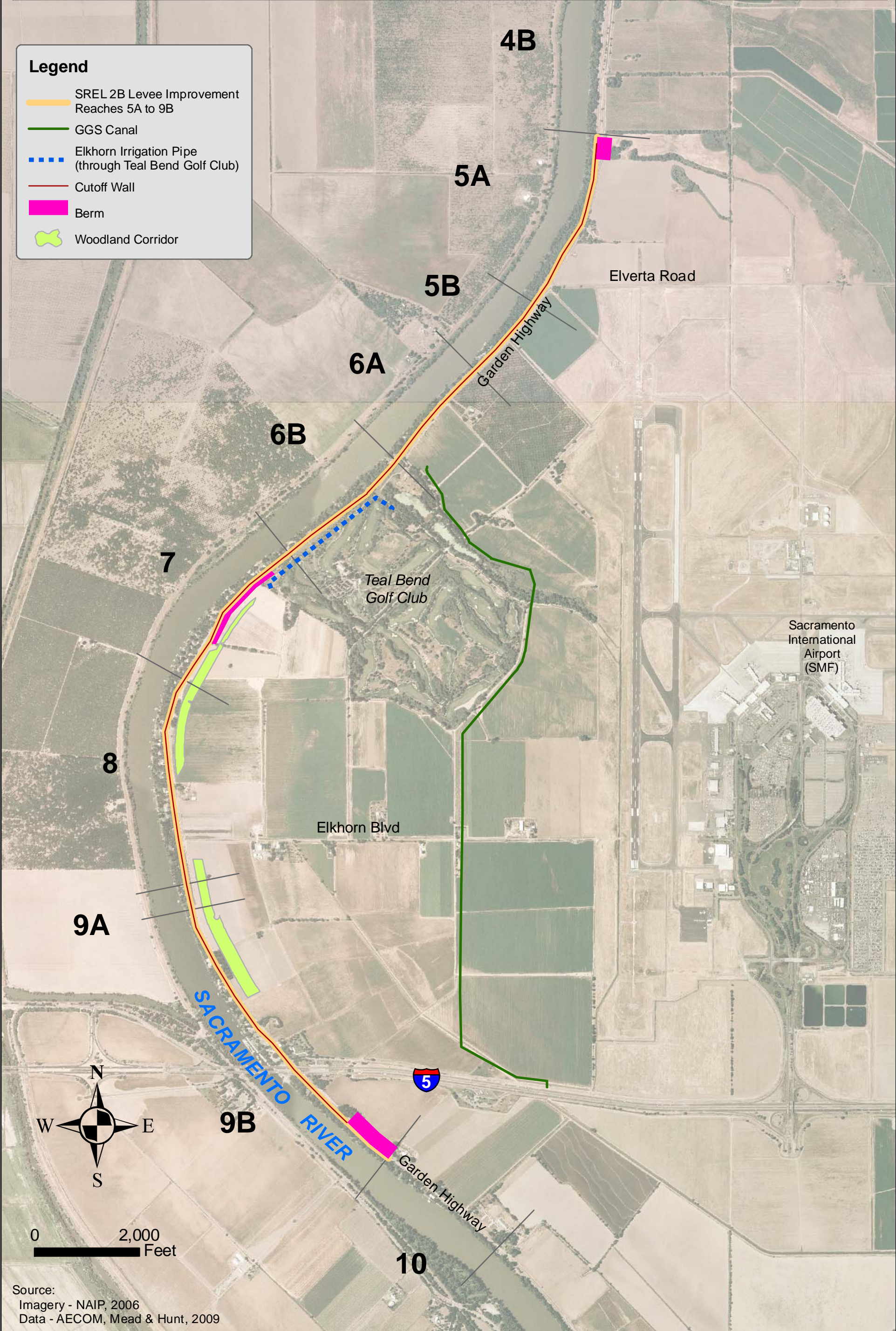


NATOMAS LEVEE IMPROVEMENT PROGRAM Sacramento River East Levee Phase 2B Reaches 5A-9B Improvement Project Anticipated Award: March 2010

Legend

-  SREL 2B Levee Improvement Reaches 5A to 9B
-  GGS Canal
-  Elkhorn Irrigation Pipe (through Teal Bend Golf Club)
-  Cutoff Wall
-  Berm
-  Woodland Corridor



Source:
Imagery - NAIP, 2006
Data - AECOM, Mead & Hunt, 2009