



Sacramento
Area Flood
Control
Agency

August 8, 2008

To: Resident

A handwritten signature in black ink, appearing to read 'Stein M. Buer', is written over the printed name.

From: Stein M. Buer, Executive Director

Re: Natomas Cross Canal South Levee Construction Haul Route Change

Background

As stated in the June 27 construction notice sent to you, levee improvement work along the Natomas Cross Canal (NCC) began on July 7. In that notice, a haul route description and map was included. As part of the construction activity, soil material will be removed from the NCC levee to provide a sufficiently wide base for the cutoff wall construction equipment. A portion of soil will be stockpiled at the existing stockpile site located at the junction of Riego Road and Garden Highway. Once the cutoff wall construction is complete, the soil will be trucked back to the NCC levee when it is rebuilt to its original height. Thus at various times, loaded trucks will be hauling soil in both directions. The map in the June 27 construction notice depicted haul traffic utilizing Riego Road east to Highway 99 and north along Highway 99 to the Howsley Road interchange. From there haul trucks would use Reclamation District 1000's maintenance easement road to access the project site.

At that time, expected improvements to strengthen the bridge crossing the North Drainage Canal on Riego Road were anticipated to be completed prior to the start of levee construction. The current bridge has weight restrictions that preclude fully loaded haul trucks from crossing it. Because the bridge strengthening will not take place during this year's construction season, SAFCA has modified the proposed haul route.

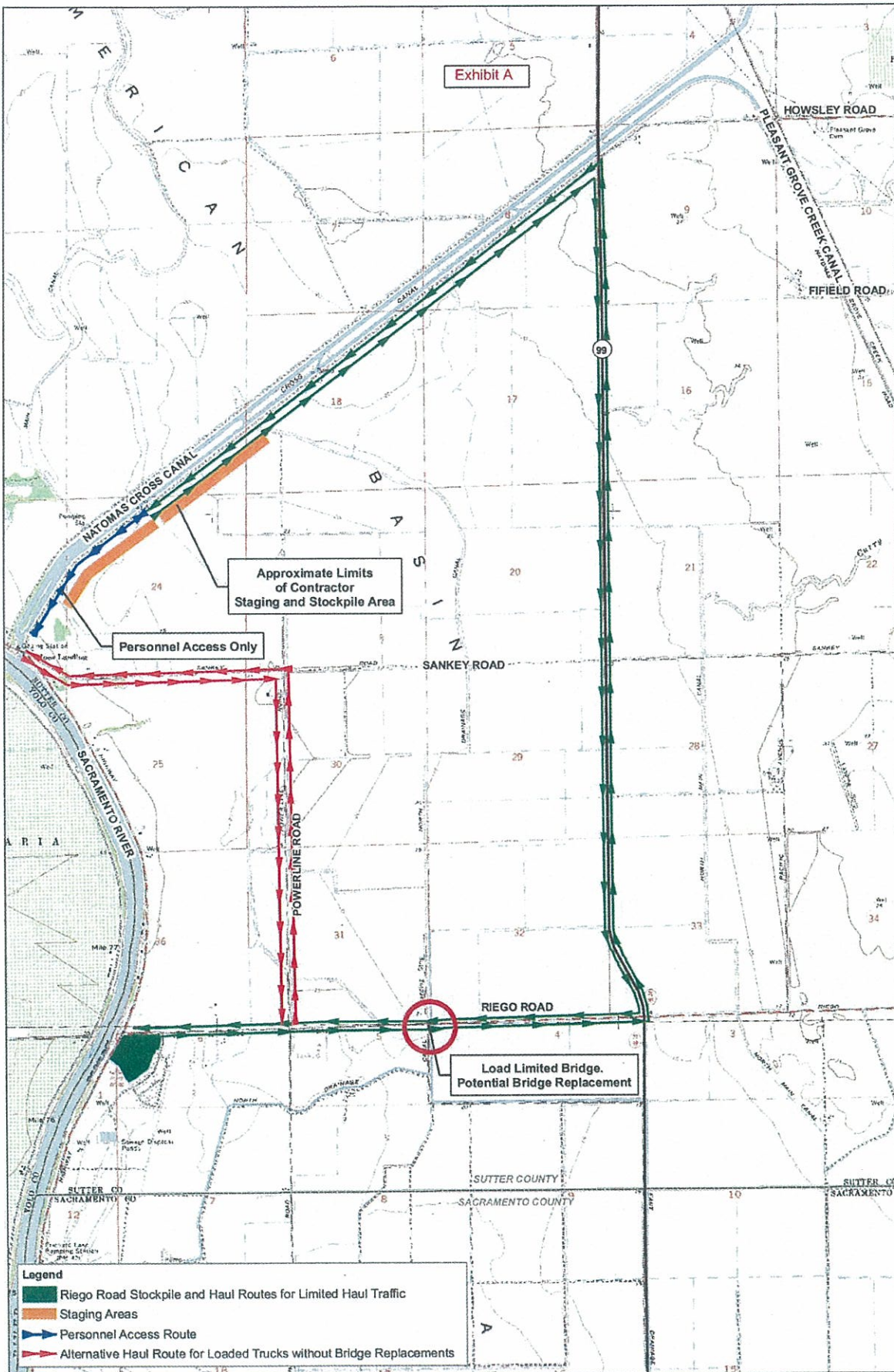
New Haul Route (Exhibit A)

As shown with red arrows on the map, loaded trucks will always haul (both ways) from the NCC site to Garden Highway, Garden Highway to Sankey Road, Sankey Road to Powerline Road, Powerline Road to Riego Road, Riego Road to the stockpile site. Empty trucks, as shown with green arrows on the map, will proceed (both ways) from the stockpile site east on Riego Road to Highway 99, Highway 99 to Howsley Road, Howsley Road to Reclamation District 1000's maintenance road to access the project site.

We anticipate all work to be completed by September 30, 2008. If you have any questions or comments please feel free to call Jay Davis or Barbara Gualco at (916) 351-0600 or email jdavis@gualco.com.

Office 916-874-7606
FAX 916-874-8289

1007 - 7th Street, 7th Floor
Sacramento, CA 95814-3407



X:\19415-00\08002\TechGIS\Sutter haul routes 2008.mxd