

Further Additional Supplemental Appropriations for Disaster Relief Requirements Act, 2018

- Congress considers this funding an “Emergency”
 - “For an additional amount for “Construction” for necessary expenses to address emergency situations at Corps of Engineers projects, and to construct, and rehabilitate and repair damages caused by natural disasters”
 - “That such amount is designated by the Congress as being for an emergency requirement pursuant to section 251(b)(2)(A)(i) of the Balanced Budget and Emergency Deficit Control Act of 1985”

Excerpts from Assistant Secretary of the Army R.D. James Message to the Employees of the Corps of Engineers on Executing the FY 2018 Program

“The nation provided these funds and now we must move dirt for our country and for our people.”

“WE MUST MOVE DIRT NOW!”

“A cultural change at all levels of the U.S. Army Corps of Engineers is required. Merely executing the program will not be condoned.”

“We can only accomplish this by getting out of our own way, overcoming meaningless processes, and making smart, risk-informed decisions.”

“I strongly urge you to get dirt moving! I simply cannot overemphasize the importance of using budgeted dollars to move dirt quickly.”

“Plain and simple, Divisions and Districts incapable of moving dirt, or unwilling to move dirt, run considerable risk of having their funding redirected to Districts that are successfully turning dirt and producing results.”

“NOW LET’S MOVE DIRT!”

SAFCA's Responsibility

- Number 1 Responsibility is to "Clear the Path"
 - Obtain required Real Estate
 - Move any required relocations
 - Remove encroachments
- We have to accomplish it in an expedited manner
- Will require additional resources

SAFCA's Commitment

- In order to help secure the funding, SAFCA committed to providing the Corps with any resources it could to help it succeed
- Awarding standing contracts that can be quickly utilized as Corps identifies needs

American River Watershed Common Features – WRDA 2016

- Corps Is standing up three teams
 - Levee Seepage/Stability
 - Sacramento River South of the American River
 - North Area Levees
 - Erosion
 - American River
 - Sacramento River
 - Sacramento Weir and Bypass

American River Watershed
Common Features –
WRDA 2016

SWB – Sacramento Weir and Bypass



ARN – American River North

ARN Reaches

ARS – American River South

ARS Reaches

GRR Improvements

-  Erosion
-  Height
-  Seepage/Stability



American River Watershed Common Features – WRDA 2016

- **SAFCA Actions**
 - Constructing part of the North Area Levee work
 - Accomplished much of the design of Sacramento River levee work
 - Clearing way for widening the Sacramento Weir and Bypass
 - Purchased the Bryte landfill
 - Prepared to perform actual landfill cleanup in 2019

American River Watershed Common Features – WRDA 2016

- **SAFCA Actions**
 - Assisting the State with its Lower Elkhorn Project, which includes setting back the Sacramento Bypass north levee
 - Working with Elkhorn Basin Reclamation Districts to consolidate
 - Assisting with real estate issues
 - Working with the Sierra Northern Railroad
 - Railroad crosses the Sacramento Weir and is in the Way of the Weir widening
 - Sponsored a Design Charrette with State on Sacramento Weir

American River Watershed Common Features – WRDA 2016

- Sponsored Three-Day Charrette with Corps to “turn over” the design work SAFCA has accomplished to the Corps
- SAFCA has scheduled an Executive Partnering session with State and Corps upper management
- SAFCA is scheduling a Partnering session with State and Corps key team members
- SAFCA has hired a Scheduler to work with the Corps
 - Develop comprehensive list of actions
 - Determine resource shortfalls

American River Watershed Common Features – WRDA 2016

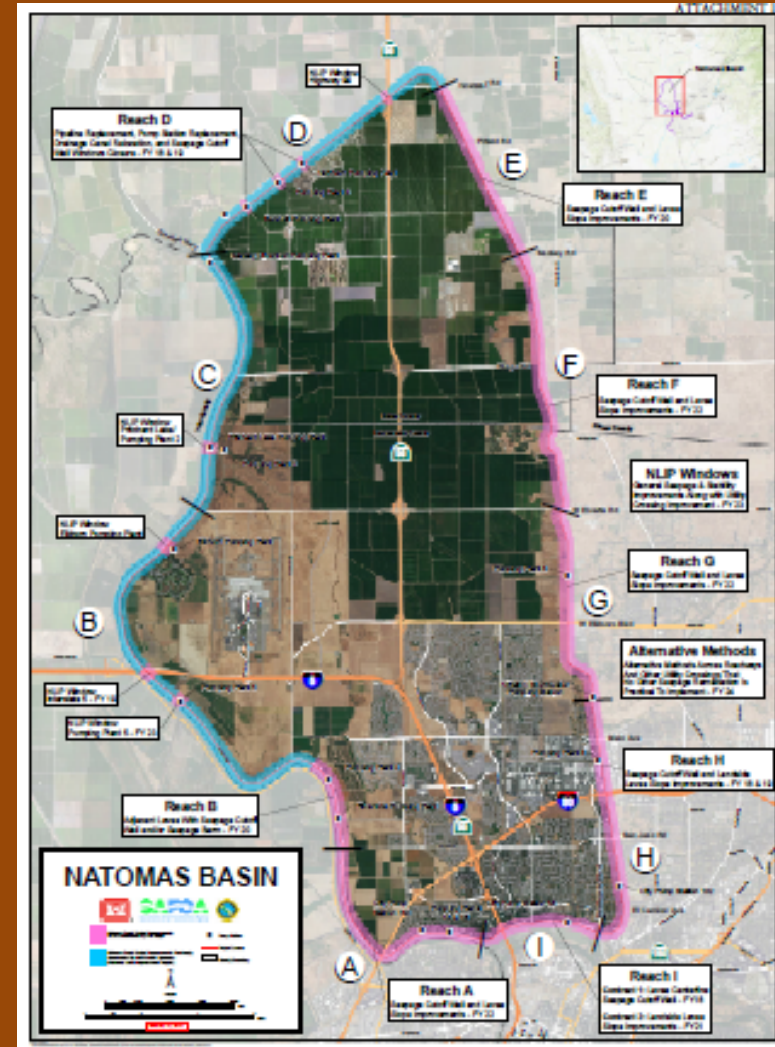
- SAFCA is hiring some expertise to assess the construction community capability to perform this work and provide the needed material in an expedited manner
- SAFCA has sponsored the Lower American River Task Force Bank Protection Working Group
 - Corps has been participating
 - Reach stakeholder agreement on erosion work

Folsom Dam Raise

- SAFCA
 - Providing facilitator
 - Assist in communication among partners
 - Help Reclamation, Corps, and State reach concurrence on design issues
 - Providing Design Assistance
 - Providing Risk Analysis assistance
 - Moving Placer County Sewer Line in way of construction

American River Watershed Common Features Project, Natomas Basin

- Reach I, Contract 1
 - Contract awarded July 30, 2018
 - Construction of Seepage Blanket under I-5
 - 2018
 - Construction of 2 miles of cutoff wall
 - 2019
 - Closure of Garden Highway



American River Watershed Common Features Project, Natomas Basin

- Reach D
 - Week of August 13, 2018
 - Mobilizing job site
 - Week of August 27, 2018
 - Begin work on Vestal Drain
 - 2018 and 2019
 - Pumping Plants
 - 2019

