

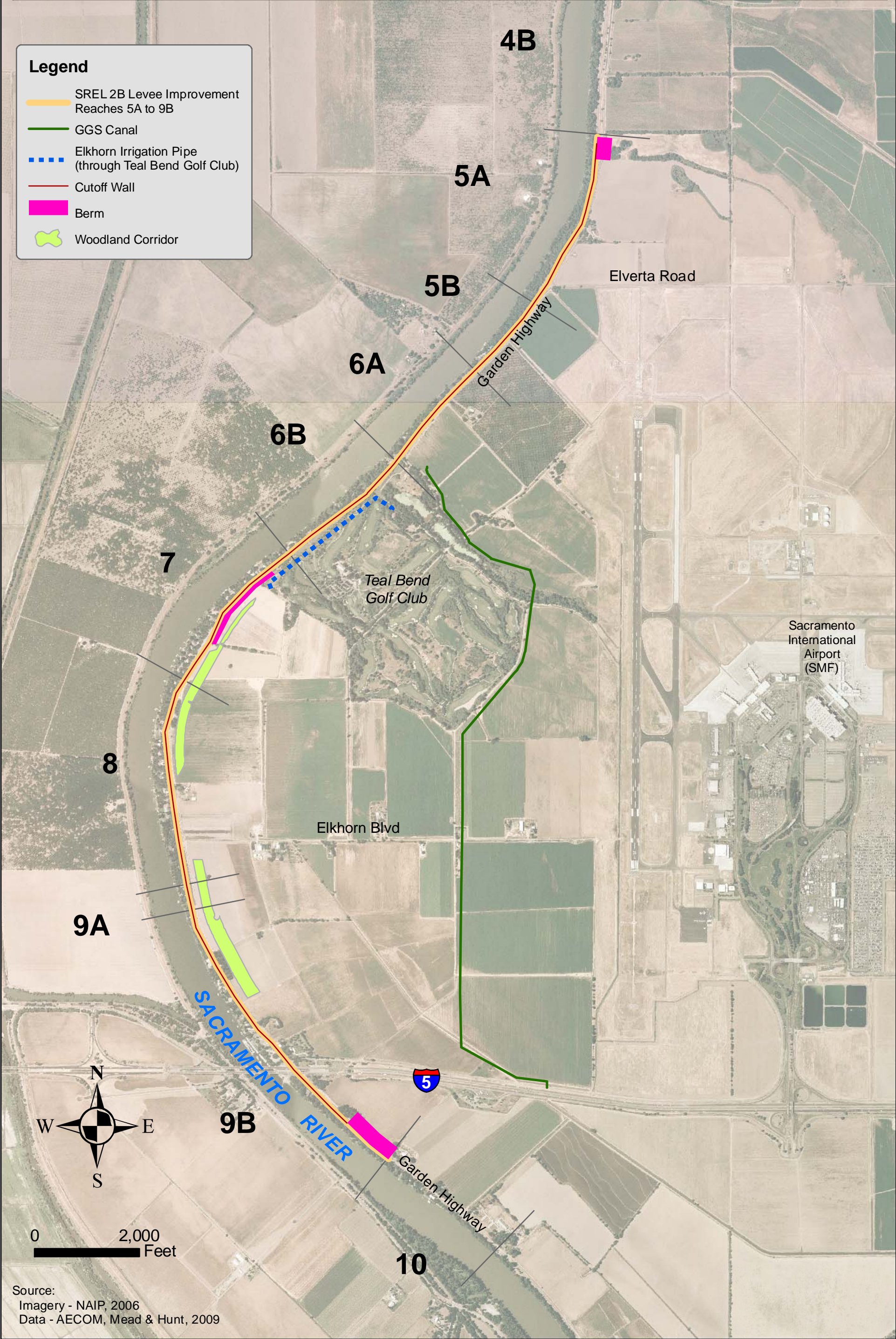
# NATOMAS LEVEE IMPROVEMENT PROGRAM

## Sacramento River East Levee Phase 2B Reaches 5A-9B Improvement Project

Anticipated Award: March 2010

**Legend**

- SREL 2B Levee Improvement Reaches 5A to 9B
- GGS Canal
- - - Elkhorn Irrigation Pipe (through Teal Bend Golf Club)
- Cutoff Wall
- █ Berm
- █ Woodland Corridor



Source:  
 Imagery - NAIP, 2006  
 Data - AECOM, Mead & Hunt, 2009