

Natomas Levee Improvement Program

SAFCA Weekly Construction and Mitigation Projects Update

June 24, 2011

**All activity subject to weather**

Location	Project	Construction Activity	Traffic Controls & Work Hours
<p>Natomas Cross Canal: from ~1.1 mile east of Hwy 99 at Howsley west to Garden Highway</p> <p>Sacramento River East Levee: from Natomas Cross Canal south to ~.9 miles past Sankey Road</p>	<p><b>Contract 3980- Levee improvements</b></p> <p><b>Sacramento River East Levee-Phase 1- <u>Reach 1</u></b></p> <p><b>Natomas Cross Canal South Levee Phase 2</b></p>	<p><b>COMPLETED</b></p>	
<p>Sacramento River East Levee: from ~.9 miles south of Sankey Road south to ~.5 miles north of Elverta Road.</p> <p>Irrigation and drainage canals ~1 mile north and south of Elverta Road.</p>	<p><b>Contract 4032- Levee Improvements &amp; Canal Relocations</b> <b>Contractor- Independent Construction</b></p> <p><b>Sacramento River East Levee Phase 1B- <u>Reaches 2-4B</u></b></p> <p><b>Upper Elkhorn Irrigation Canal</b></p> <p><b>Upper Giant Garter Snake/Drainage Canal</b></p>	<p><b><u>Work in Progress</u></b> Grading top of adjacent levee and fine grading</p> <p>Irrigation and drainage work.</p> <p><b><u>Anticipated Work Next Week</u></b> Grading top of adjacent levee and fine grading.</p> <p>Potential for limited placement of road base on patrol road.</p> <p>Irrigation and drainage work.</p>	<p>No anticipated impacts to traffic. Contractor working during daylight hours Monday-Friday.</p>
<p>Sacramento River East Levee: from ~.5 miles north of Elverta Road south to ~.5 miles past Interstate 5.</p> <p>Natomas Cross Canal ~.5 miles east of Hwy 99, north of Howsley Road. Canals east of Garden Highway from just north of Teal Bend south to Interstate 5</p>	<p><b>Contract 4046- Levee improvements &amp; Canal relocations</b> <b>Contractor- Nordic Industries</b></p> <p><b>Sacramento River East Levee Phase 2B- <u>Reaches 5A-9B</u></b></p> <p><b>Elkhorn Irrigation Canal Phase 2B relocation</b></p> <p><b>GGS canal Phase 2A</b></p> <p><b>NCC south levee Phase 2B</b></p>	<p><b><u>Work in Progress</u></b> Levee embankment south of and on frontage of Teal Bend Golf Club.</p> <p>Slurry wall work south of Teal Bend.</p> <p>South of Elkhorn to N. Bayou: levee foundation embankment.</p> <p>Installing drainage crossings in Garden Highway from N. of Elverta to N. Bayou.</p> <p><b><u>Anticipated Work Next Week</u></b> Continuation of Work in Progress.</p>	<p>Elverta Road -interim ramp to Garden Highway in place and opened to traffic.</p> <p>Monday-Saturday 6:00 a.m.- 8:00 p.m., Sunday from 7:00 am to 5:00 pm for earthwork activities.</p> <p><u>Slurry wall work south of Teal Bend performed 24 hrs/day Mon.-Sat.</u></p> <p>Minor construction traffic from Elverta Road to Reservoir Road.</p> <p>Lane closures and flagmen supporting drainage crossings, anticipate brief delays.</p>

Location	Project	Construction Activity	Traffic Controls & Work Hours
Sacramento River East Levee: from ~.5 miles south of Interstate 5 to ~.5 miles south of Powerline Road.	<p><b>Contract 4092- Levee improvements</b>  <b>Contractor- Sukut Construction</b></p> <p><b>Sacramento River East Levee Phase 3- <u>Reaches 10-12B</u></b></p>	<p><b><u>Work in Progress</u></b>            Clearing, borrow site preparation, levee foundation, levee embankment installation on portions of portions of project from I-5 to south of Powerline Rd.</p> <p><b><u>Anticipated Work Next Week</u></b>            Continuation of Work in Progress.</p>	<p>Potential AT&amp;T work on Garden Highway ~1 to ~3 miles south of I-5: utility pole removal, lane closure, flagmen and brief delays in both locations on Saturday 6/25</p> <p>Sukut working daylight hours, Monday-Saturday.</p> <p><u>Powerline Road is closed at Garden Highway. detour signage has been provided. The closure is anticipated through September 2011.</u></p>
Sacramento River East Levee: east of Garden Highway from Teal Bend south to Interstate 5	<p><b>Contract 4047- Canal relocation</b>  <b>Contractor- Teichert Construction</b></p> <p><b>Elkhorn Irrigation Canal Phase 2A relocation</b></p> <p><b>Structure demolition, tree removal</b></p>	<p><b><u>Work in Progress</u></b>            None.</p> <p><b><u>Anticipated Work Next Week</u></b>            None.</p>	<p>No impacts to traffic anticipated.</p>
Sacramento River East Levee: from ~.9 miles south of Natomas Cross Canal to ~.7 miles north of Riego Road.	<p><b>Contract 4055- Woodland Corridor Mitigation and Enhancement Project</b>  <b>Contractor- River Partners</b></p>	<p><b><u>Work in Progress</u></b>            Maintenance and monitoring of mitigation plantings.</p> <p><b><u>Anticipated Work Next Week</u></b>            Maintenance and monitoring of mitigation plantings.</p>	<p>No anticipated impacts to traffic.</p>
Sacramento River East Levee Phase 3A: from south of I-5 to south of Powerline Road.	<p><b>Contract 4069- Structure Demolition and Tree Removal Project</b>  <b>Contractor- All Clear Inc.</b></p>	<p><b><u>Work in Progress</u></b>            Structure demolition south of I-5</p> <p><b><u>Anticipated Work Next Week</u></b>            Structure demolition south of I-5</p>	<p>Contractor working during daylight hours Monday-Sunday.</p>

If you have any questions regarding the project, please visit the SAFCA website at [www.safca.org](http://www.safca.org) or contact Jay Davis at Gualco Consulting (916) 351-0600 or [jdavis@gualco.com](mailto:jdavis@gualco.com)

Basin-wide	<b>Basin-wide Design Explorations (Crown Borings) and instrumentation readings</b> Contractor- Kleinfelder	<p><b>Work in Progress</b> Data collection from instrumentation and crown borings on Garden Highway between Riego Road and North Bayou Road.</p> <p><b>Anticipated Work Next Week</b> Data collection from instrumentation and crown borings on Garden Highway between Riego Road and North Bayou Road.</p>	Traffic control measures (flaggers) will be in place to support borings/readings, brief delays. Contractor working during daylight hours Monday-Friday.
------------	---	---	---

**Other Flood Control Improvement Activities**

Provided below is information regarding other flood control improvements and activities being performed in the Natomas Basin by other agencies

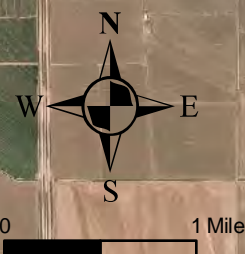
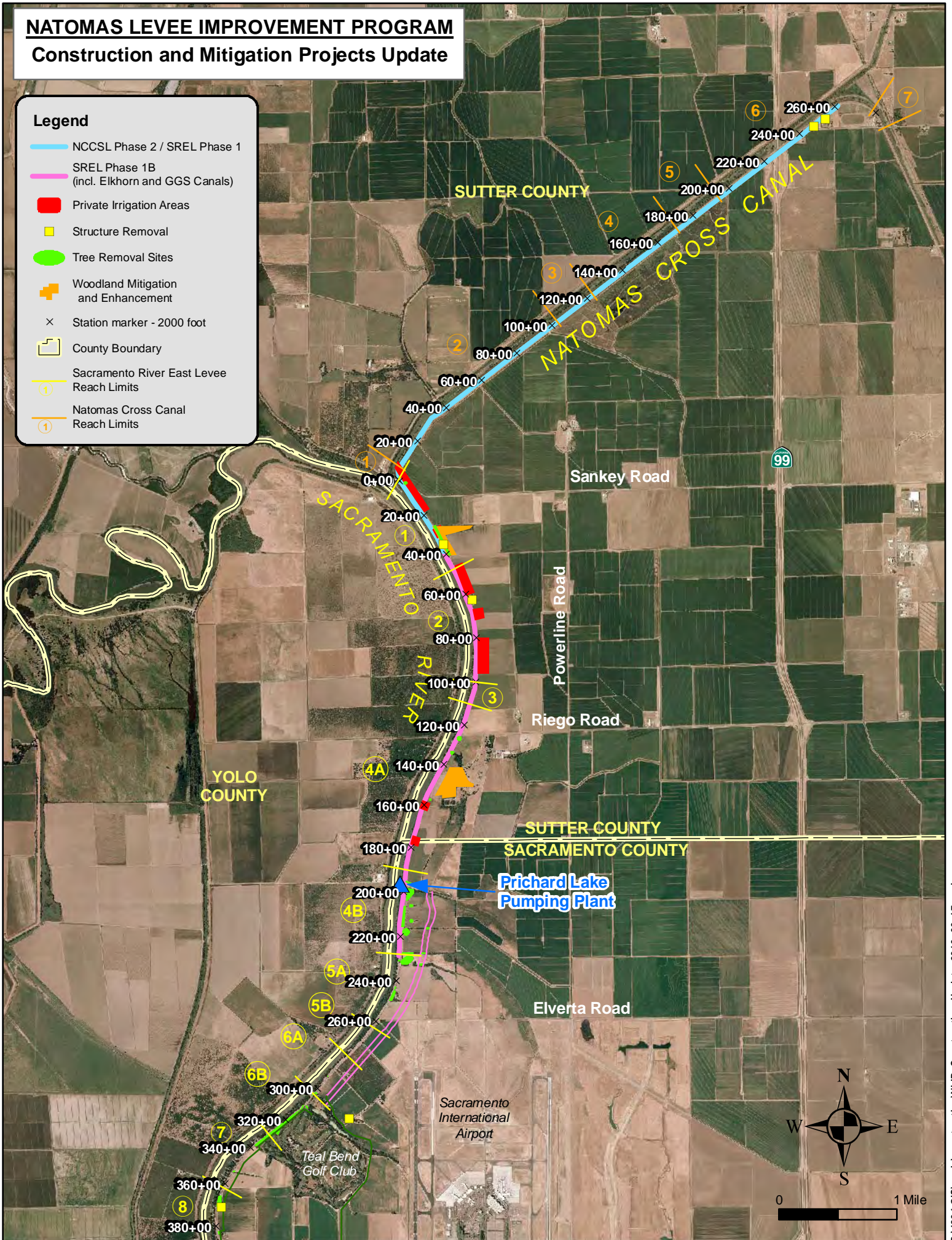
Project	Activity	Traffic Control
<b>U.S. Army Corps of Engineers Natomas Levee Improvement Design Explorations (Sacramento River East Levee, American River North Levee, Natomas East Main Drainage Canal, Pleasant Grove Creek Canal)</b>	<p><b>Work in Progress</b> Data collection from instrumentation and levee crown borings along Natomas East Main Drainage Canal west levee from Elkhorn Blvd south to Northgate Blvd and along Garden Highway east levee between Powerline Road and Northgate Blvd.</p>	<p><b>Traffic control measures (flaggers) will be in place to support borings/readings on levee crown, brief delays.</b></p>

# NATOMAS LEVEE IMPROVEMENT PROGRAM

## Construction and Mitigation Projects Update

### Legend

- NCCSL Phase 2 / SREL Phase 1
- SREL Phase 1B (incl. Elkhorn and GGS Canals)
- Private Irrigation Areas
- Structure Removal
- Tree Removal Sites
- + Woodland Mitigation and Enhancement
- × Station marker - 2000 foot
- County Boundary
- ① Sacramento River East Levee Reach Limits
- ① Natomas Cross Canal Reach Limits



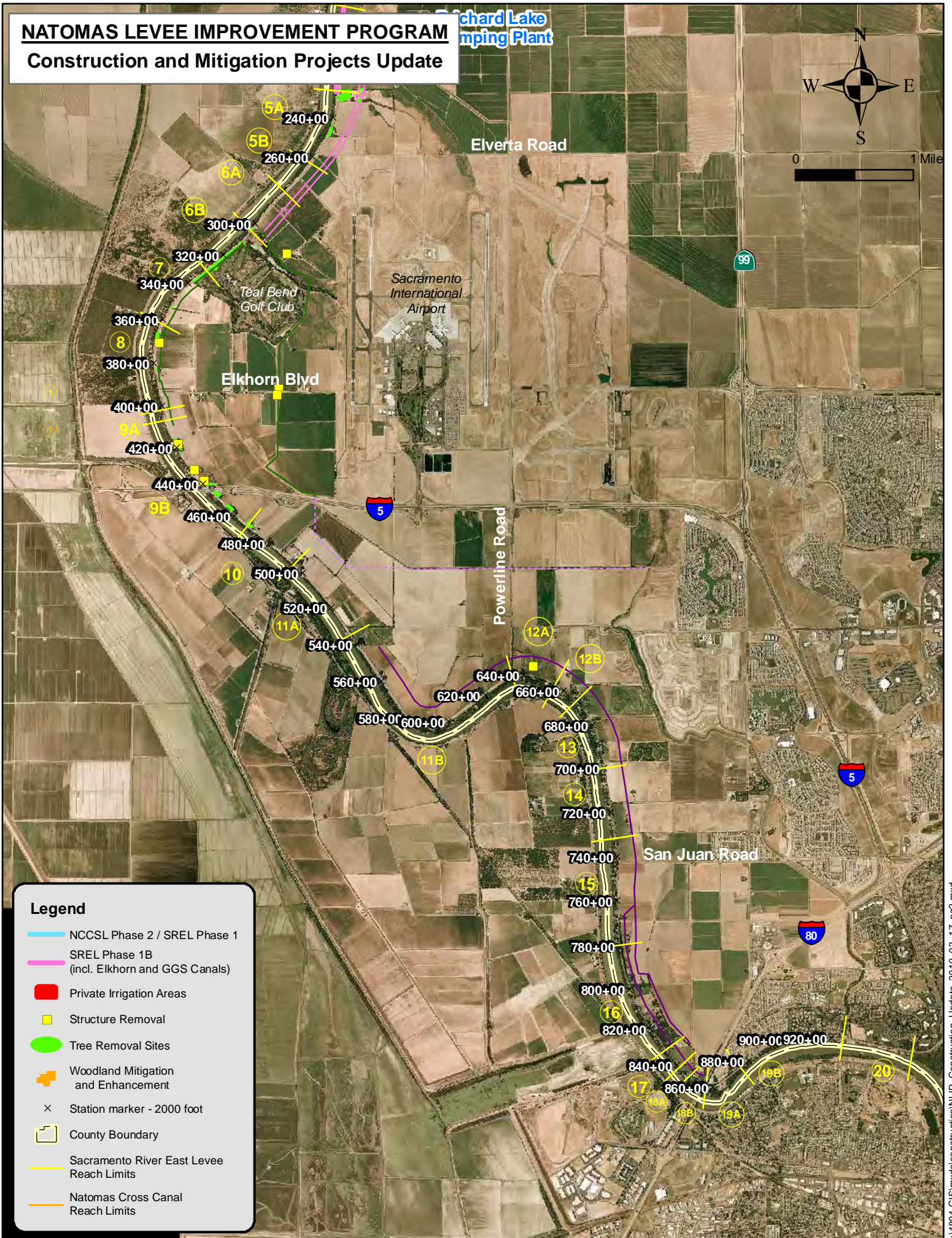
# NATOMAS LEVELLEVE IMPROVEMENT PROGRAM

Richard Lake  
Pumping Plant

## Construction and Mitigation Projects Update



0 1 Mile



### Legend

- NCCSL Phase 2 / SREL Phase 1
- SREL Phase 1B (incl. Elkhorn and GGS Canals)
- Private Irrigation Areas
- Structure Removal
- Tree Removal Sites
- Woodland Mitigation and Enhancement
- Station marker - 2000 foot
- County Boundary
- Sacramento River East Levee Reach Limits
- Natomas Cross Canal Reach Limits