

## Natomas Levee Improvement Program

### SAFCA Weekly Construction and Mitigation Projects Update

April 29, 2011

**All activity subject to weather**

Location	Project	Construction Activity	Traffic Controls & Work Hours
Natomas Cross Canal: from ~1.1 mile east of Hwy 99 at Howsley west to Garden Highway  Sacramento River East Levee: from Natomas Cross Canal south to ~.9 miles past Sankey Road	<b>Contract 3980- Levee improvements</b>  <b>Sacramento River East Levee-Phase 1-<u>Reach 1</u></b>  <b>Natomas Cross Canal South Levee Phase 2</b>	<b>COMPLETED</b>	
Sacramento River East Levee: from ~.9 miles south of Sankey Road south to ~.5 miles north of Elverta Road.  Irrigation and drainage canals ~1 mile north and south of Elverta Road.	<b>Contract 4032- Levee Improvements &amp; Canal Relocations</b> <b>Contractor- Independent Construction</b>  <b>Sacramento River East Levee Phase 1B- <u>Reaches 2-4B</u></b>  <b>Upper Elkhorn Irrigation Canal</b>  <b>Upper Giant Garter Snake/Drainage Canal</b>	<b><u>Work in Progress</u></b> Grading top of adjacent levee.  <b><u>Anticipated Work Next Week</u></b> Finish grading.  Irrigation and drainage work.	No anticipated impacts to traffic. Contractor working during daylight hours Monday-Friday.
Sacramento River East Levee: from ~.5 miles north of Elverta Road south to ~.5 miles past Interstate 5.  Natomas Cross Canal ~.5 miles east of Hwy 99, north of Howsley Road. Canals east of Garden Highway from just north of Teal Bend south to Interstate 5	<b>Contract 4046- Levee improvements &amp; Canal relocations</b> <b>Contractor- Nordic Industries</b>  <b>Sacramento River East Levee Phase 2B- <u>Reaches 5A-9B</u></b>  <b>Elkhorn Irrigation Canal Phase 2B relocation</b>  <b>GGs canal Phase 2A</b>  <b>NCC south levee Phase 2B</b>	<b><u>Work in Progress</u></b> Stripping landside levee from Elverta to Elkhorn.  <b><u>Anticipated Work Next Week</u></b> Excavation of new levee foundation just south of Teal Bend GC.  South of Elkhorn to N. Bayou- possible levee foundation excavation and stability berm removal  Box culvert installation behind Teal Bend GC and schoolhouse pipeline along Reservoir Road.	Elverta Road -interim ramp to Garden Highway in place and opened to traffic.  Monday-Saturday 6:00 a.m.- 8:00 p.m., Sunday from 7:00 am to 5:00 pm  Minor construction traffic from Elverta Road to Reservoir Road.  SMUD working south of Elkhorn Road on the west side of Garden Highway, flagman will be present, potential brief delays.  AT&T utility relocation south of I-5.

Location	Project	Construction Activity	Traffic Controls & Work Hours
Sacramento River East Levee: from ~.5 miles south of Interstate 5 to ~.5 miles south of Powerline Road.	<p><b>Contract 4092- Levee improvements</b>  <b>Contractor- Sukut Construction</b></p> <p><b>Sacramento River East Levee Phase 3- <u>Reaches 10-12B</u></b></p>	<p><b><u>Work in Progress</u></b>                      Submittals and mobilization.</p> <p><b><u>Anticipated Work Next Week</u></b>                      Submittals and mobilization.</p>	Potential SMUD work ~ 3/4 miles south of I-5, utility pole relocation, anticipate one-lane closures, flagmen and brief delays.
Sacramento River East Levee: east of Garden Highway from Teal Bend south to Interstate 5	<p><b>Contract 4047- Canal relocation</b>  <b>Contractor- Teichert Construction</b></p> <p><b>Elkhorn Irrigation Canal Phase 2A relocation</b></p> <p><b>Structure demolition, tree removal</b></p>	<p><b><u>Work in Progress</u></b>                      None.</p> <p><b><u>Anticipated Work Next Week</u></b>                      None.</p>	No impacts to traffic anticipated.
Sacramento River East Levee: from ~.9 miles south of Natomas Cross Canal to ~.7 miles north of Riego Road.	<p><b>Contract 4055- Woodland Corridor Mitigation and Enhancement Project</b>  <b>Contractor- River Partners</b></p>	<p><b><u>Work in Progress</u></b>                      Maintenance and monitoring of mitigation plantings.</p> <p><b><u>Anticipated Work Next Week</u></b>                      Maintenance and monitoring of mitigation plantings.</p>	No anticipated impacts to traffic.
Sacramento River East Levee Phase 3A: from south of I-5 to south of Powerline Road.	<p><b>Contract 4069- Structure Demolition and Tree Removal Project</b>  <b>Contractor- All Clear Inc.</b></p>	<p><b><u>Work in Progress</u></b>                      Structure demolition south of I-5.</p> <p><b><u>Anticipated Work Next Week</u></b>                      Structure demolition south of I-5.</p>	<p>SMUD setting poles near Powerline Road, potential brief delays to traffic, AT&amp;T crews removing poles along the Garden Highway, north of Powerline Road, potential brief traffic delays.</p> <p>Contractor working during daylight hours Monday-Saturday.</p>

If you have any questions regarding the project, please visit the SAFCA website at [www.safca.org](http://www.safca.org) or contact Jay Davis at Gualco Consulting (916) 351-0600 or [jdavis@gualco.com](mailto:jdavis@gualco.com)

Location	Project	Construction Activity	Traffic Controls & Work Hours
Basin-wide	<b>Basin-wide Design Explorations (Crown Borings) and instrumentation readings</b> <b>Contractor- Kleinfelder</b>	<p><b><u>Work in Progress</u></b> Data collection from instrumentation and crown borings on Garden Highway between Riego Road and North Bayou Road.</p> <p><b><u>Anticipated Work Next Week</u></b> Data collection from instrumentation and crown borings on Garden Highway at Sankey Road and north of Elverta Road.</p>	Traffic control measures (flaggers) will be in place to support borings/readings, brief delays. Contractor working during daylight hours Monday-Friday.

**Other Flood Control Improvement Activities**

Provided below is information regarding other flood control improvements and activities being performed in the Natomas Basin by other agencies

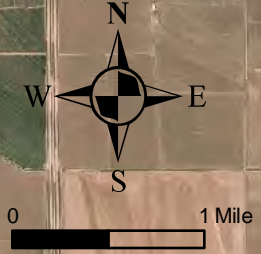
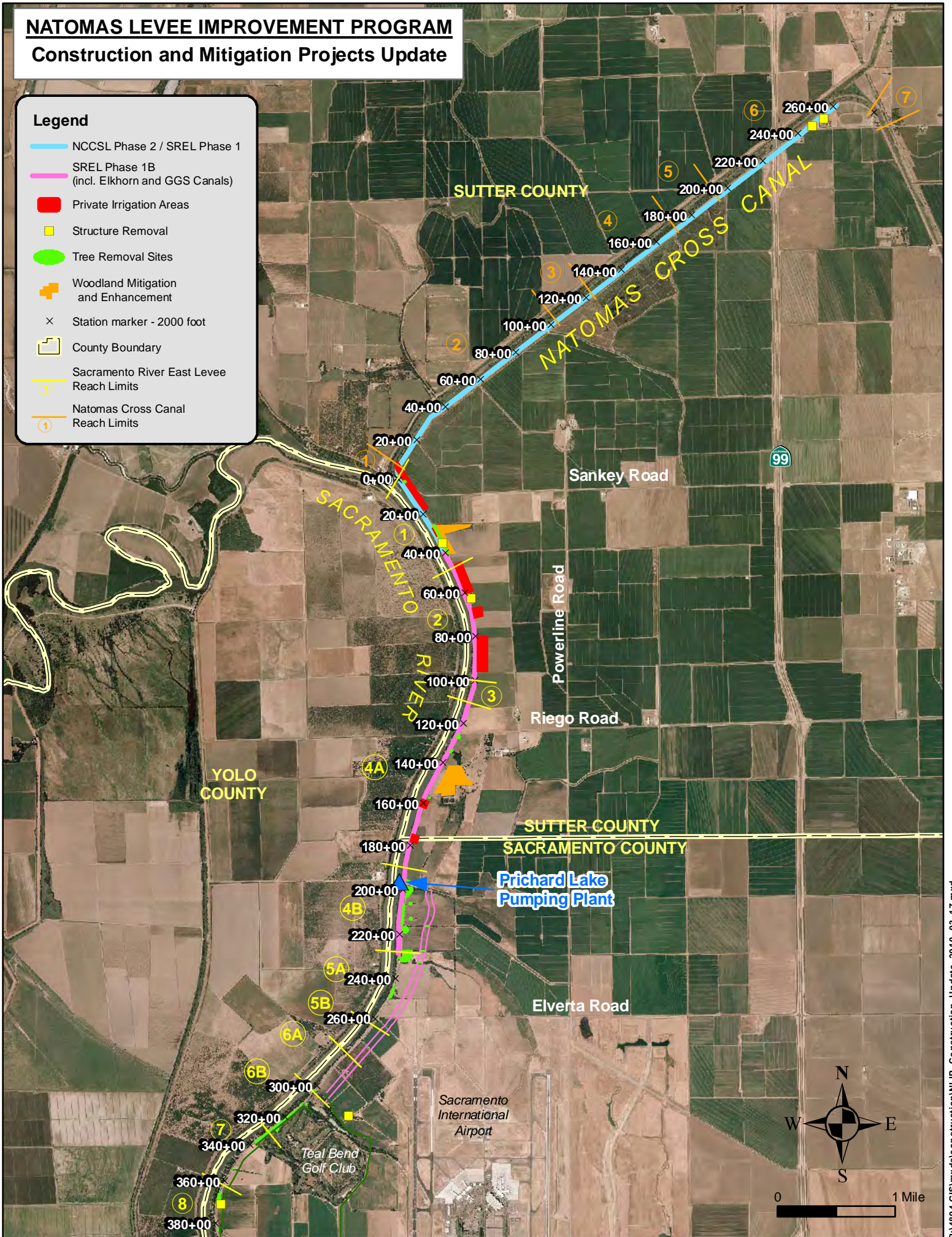
Project	Activity	Traffic Control
<b>U.S. Army Corps of Engineers</b> <b>Natomas Levee Improvement Design Explorations</b> <b>(Sacramento River East Levee, American River North Levee, Natomas East Main Drainage Canal, Pleasant Grove Creek Canal)</b>	<p><b><u>Work in Progress</u></b> Data collection from instrumentation and levee crown borings along Natomas East Main Drainage Canal west levee from Elkhorn Blvd south to Northgate Blvd.</p>	Traffic control measures (flaggers) will be in place to support borings/readings on levee crown, brief delays.

# NATOMAS LEVEE IMPROVEMENT PROGRAM

## Construction and Mitigation Projects Update

### Legend

- NCCSL Phase 2 / SREL Phase 1
- SREL Phase 1B (incl. Elkhorn and GGS Canals)
- Private Irrigation Areas
- Structure Removal
- Tree Removal Sites
- + Woodland Mitigation and Enhancement
- × Station marker - 2000 foot
- County Boundary
- ① Sacramento River East Levee Reach Limits
- ① Natomas Cross Canal Reach Limits



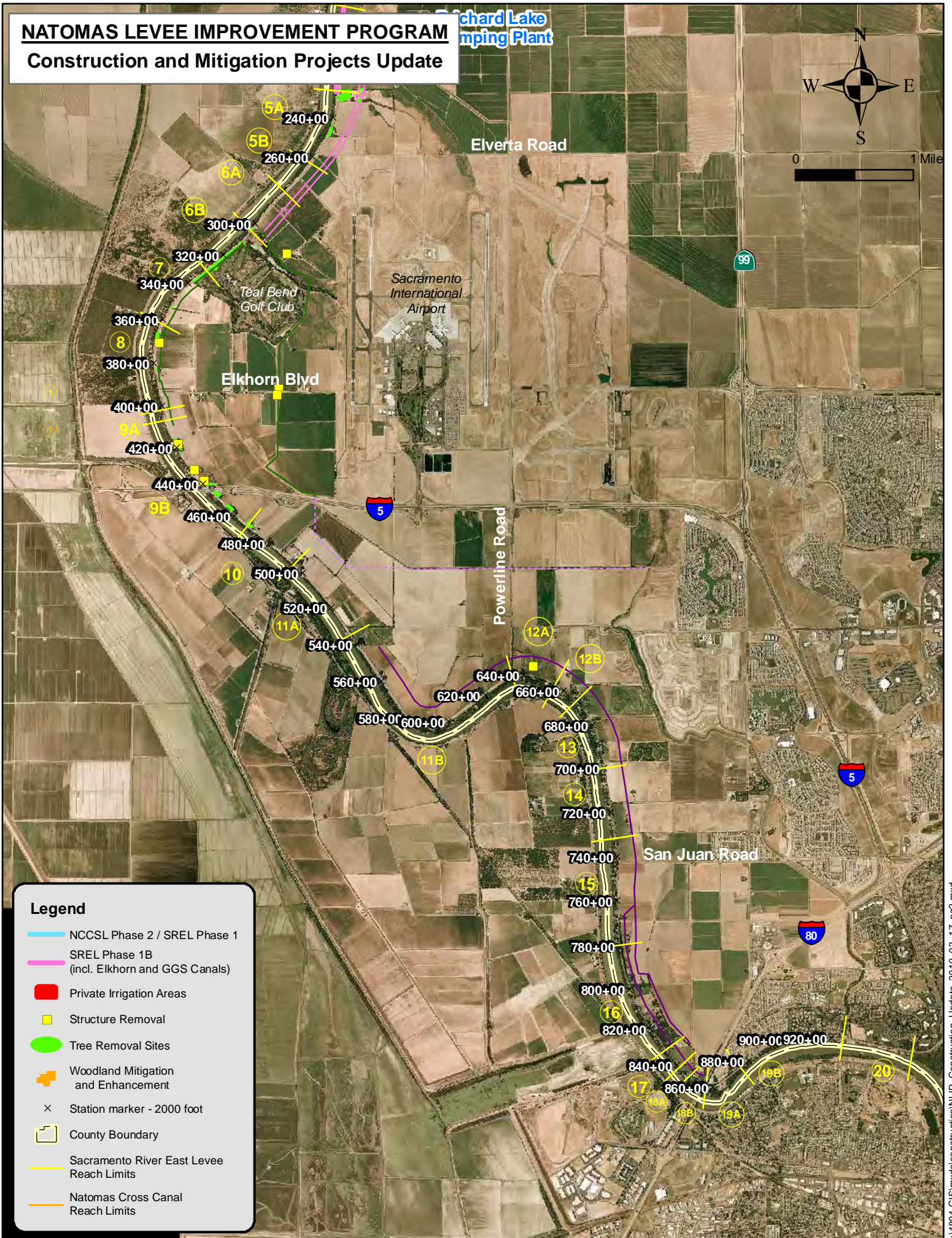
# NATOMAS LEVELLEVE IMPROVEMENT PROGRAM

Richard Lake  
Pumping Plant

## Construction and Mitigation Projects Update



0 1 Mile



### Legend

- NCCSL Phase 2 / SREL Phase 1
- SREL Phase 1B (incl. Elkhorn and GGS Canals)
- Private Irrigation Areas
- Structure Removal
- Tree Removal Sites
- Woodland Mitigation and Enhancement
- Station marker - 2000 foot
- County Boundary
- Sacramento River East Levee Reach Limits
- Natomas Cross Canal Reach Limits