

Natomas Levee Improvement Program

SAFCA Weekly Construction and Mitigation Projects Update

April 15, 2011

All activity subject to weather

| Location | Project | Construction Activity | Traffic Controls & Work Hours |
|---|---|---|--|
| <p>Natomas Cross Canal: from ~1.1 mile east of Hwy 99 at Howsley west to Garden Highway</p> <p>Sacramento River East Levee: from Natomas Cross Canal south to ~.9 miles past Sankey Road</p> | <p>Contract 3980- Levee improvements</p> <p>Sacramento River East Levee- Phase 1- Reach 1</p> <p>Natomas Cross Canal South Levee Phase 2</p> | <p>COMPLETED</p> | |
| <p>Sacramento River East Levee: from ~.9 miles south of Sankey Road south to ~.5 miles north of Elverta Road.</p> <p>Irrigation and drainage canals ~1 mile north and south of Elverta Road.</p> | <p>Contract 4032- Levee Improvements & Canal Relocations Contractor- Independent Construction</p> <p>Sacramento River East Levee Phase 1B- Reaches 2-4B</p> <p>Upper Elkhorn Irrigation Canal</p> <p>Upper Giant Garter Snake/Drainage Canal</p> | <p><u>Work in Progress</u> Grading.</p> <p><u>Anticipated Work Next Week</u> Grading top of adjacent levee.</p> | <p>No anticipated impacts to traffic. Contractor working during daylight hours Monday-Friday.</p> |
| <p>Sacramento River East Levee: from ~.5 miles north of Elverta Road south to ~.5 miles past Interstate 5.</p> <p>Natomas Cross Canal ~.5 miles east of Hwy 99, north of Howsley Road. Canals east of Garden Highway from just north of Teal Bend south to Interstate 5</p> | <p>Contract 4046- Levee improvements & Canal relocations Contractor- Nordic Industries</p> <p>Sacramento River East Levee Phase 2B- Reaches 5A-9B</p> <p>Elkhorn Irrigation Canal Phase 2B relocation</p> <p>GGs canal Phase 2A</p> <p>NCC south levee Phase 2B</p> | <p><u>Work in Progress</u> Pipeline work at Reservoir Road (Elkhorn pumping plant) Erosion control.</p> <p><u>Anticipated Work Next Week</u> Stripping landside levee from Elverta to Elkhorn.</p> <p>Box culvert installation behind Teal Bend GC and schoolhouse pipeline along Reservoir Road.</p> | <p>Elverta Road -interim ramp to Garden Highway in place and opened to traffic.</p> <p>Monday-Saturday 6:00 a.m.- 8:00 p.m., Sunday from 7:00 am to 5:00 pm</p> <p>Minor construction traffic from Elverta Road to Reservoir Road.</p> <p>SMUD setting poles south of Elkhorn Road along the Garden Highway, flagman will be present, potential brief delays</p> |

| Location | Project | Construction Activity | Traffic Controls & Work Hours |
|--|---|--|---|
| Sacramento River East Levee: east of Garden Highway from Teal Bend south to Interstate 5 | <p>Contract 4047- Canal relocation Contractor- Teichert Construction</p> <p>Sacramento River East Levee Phase 2A- Reaches 5A-9B</p> <p>Elkhorn Irrigation Canal Phase 2A relocation</p> <p>Structure demolition, tree removal</p> | <p><u>Work in Progress</u> Erosion control.</p> <p><u>Anticipated Work Next Week</u> None.</p> | No impacts to traffic anticipated |
| Basin-wide | <p>Basin-wide Design Explorations (Crown Borings) and instrumentation readings Contractor- Kleinfelder</p> | <p><u>Work in Progress</u> Data collection from instrumentation and crown borings on Garden Highway between Riego Road and North Bayou Road.</p> <p><u>Anticipated Work Next Week</u> Data collection from instrumentation and crown borings on Garden Highway at Sankey Road and north of Elverta Road.</p> | Traffic control measures (flaggers) will be in place to support borings/readings, brief delays. Contractor working during daylight hours Monday-Friday. |
| Sacramento River East Levee: from ~.9 miles south of Natomas Cross Canal to ~.7 miles north of Riego Road. | <p>Contract 4055- Woodland Corridor Mitigation and Enhancement Project Contractor- River Partners</p> | <p><u>Work in Progress</u> Maintenance and monitoring of mitigation plantings.</p> <p><u>Anticipated Work Next Week</u> Maintenance and monitoring of mitigation plantings.</p> | No anticipated impacts to traffic. |
| Sacramento River East Levee Phase 3A: from south of I-5 to south of Powerline Road. | <p>Contract 4069- Structure Demolition and Tree Removal Project Contractor- All Clear Inc.</p> | <p><u>Work in Progress</u> Structure demolition south of I-5</p> <p><u>Anticipated Work Next Week</u> Structure demolition south of I-5</p> | <p>SMUD setting poles near Powerline Road, potential brief delays to traffic, AT&T crews removing poles along the Garden Highway, north of Powerline Road, potential brief delays.</p> <p>Contractor working during daylight hours Monday-Saturday.</p> |

If you have any questions regarding the project, please visit the SAFCA website at www.safca.org or contact Jay Davis at Gualco Consulting (916) 351-0600 or jdavis@gualco.com

Other Flood Control Improvement Activities

Provided below is information regarding other flood control improvements and activities being performed in the Natomas Basin by other agencies

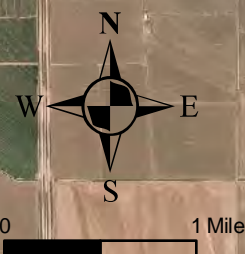
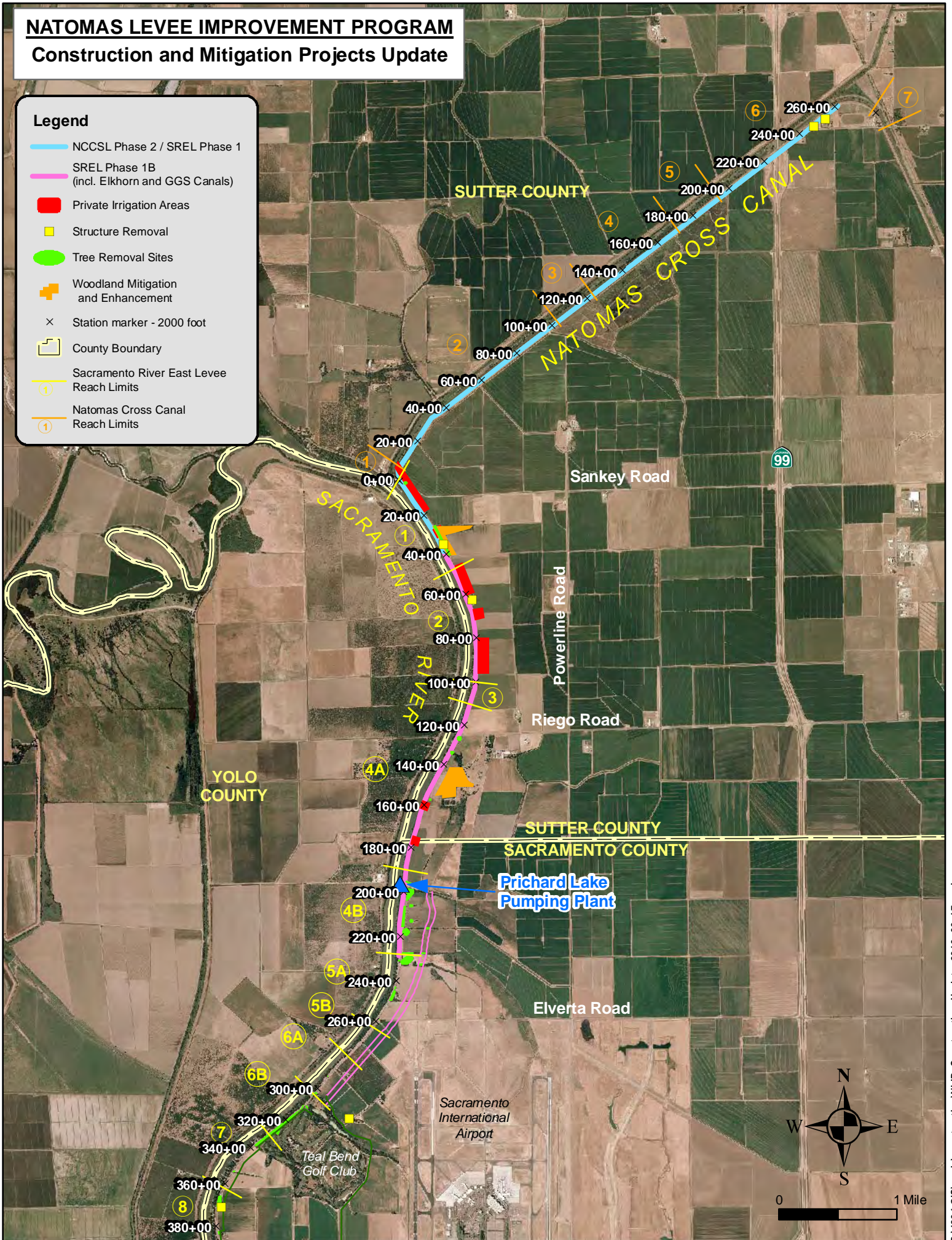
| Project | Activity | Traffic Control |
|---|---|--|
| U.S. Army Corps of Engineers Natomas Levee Improvement Design Explorations (Sacramento River East Levee, American River North Levee, Natomas East Main Drainage Canal, Pleasant Grove Creek Canal) | <u>Work in Progress</u> Data collection from instrumentation and levee crown borings along Natomas East Main Drainage Canal west levee from Elkhorn Blvd south to Northgate Blvd. | Traffic control measures (flaggers) will be in place to support borings/readings on levee crown, brief delays. |
| | | |
| | | |

NATOMAS LEVEE IMPROVEMENT PROGRAM

Construction and Mitigation Projects Update

Legend

- NCCSL Phase 2 / SREL Phase 1
- SREL Phase 1B (incl. Elkhorn and GGS Canals)
- Private Irrigation Areas
- Structure Removal
- Tree Removal Sites
- + Woodland Mitigation and Enhancement
- × Station marker - 2000 foot
- County Boundary
- ① Sacramento River East Levee Reach Limits
- ① Natomas Cross Canal Reach Limits



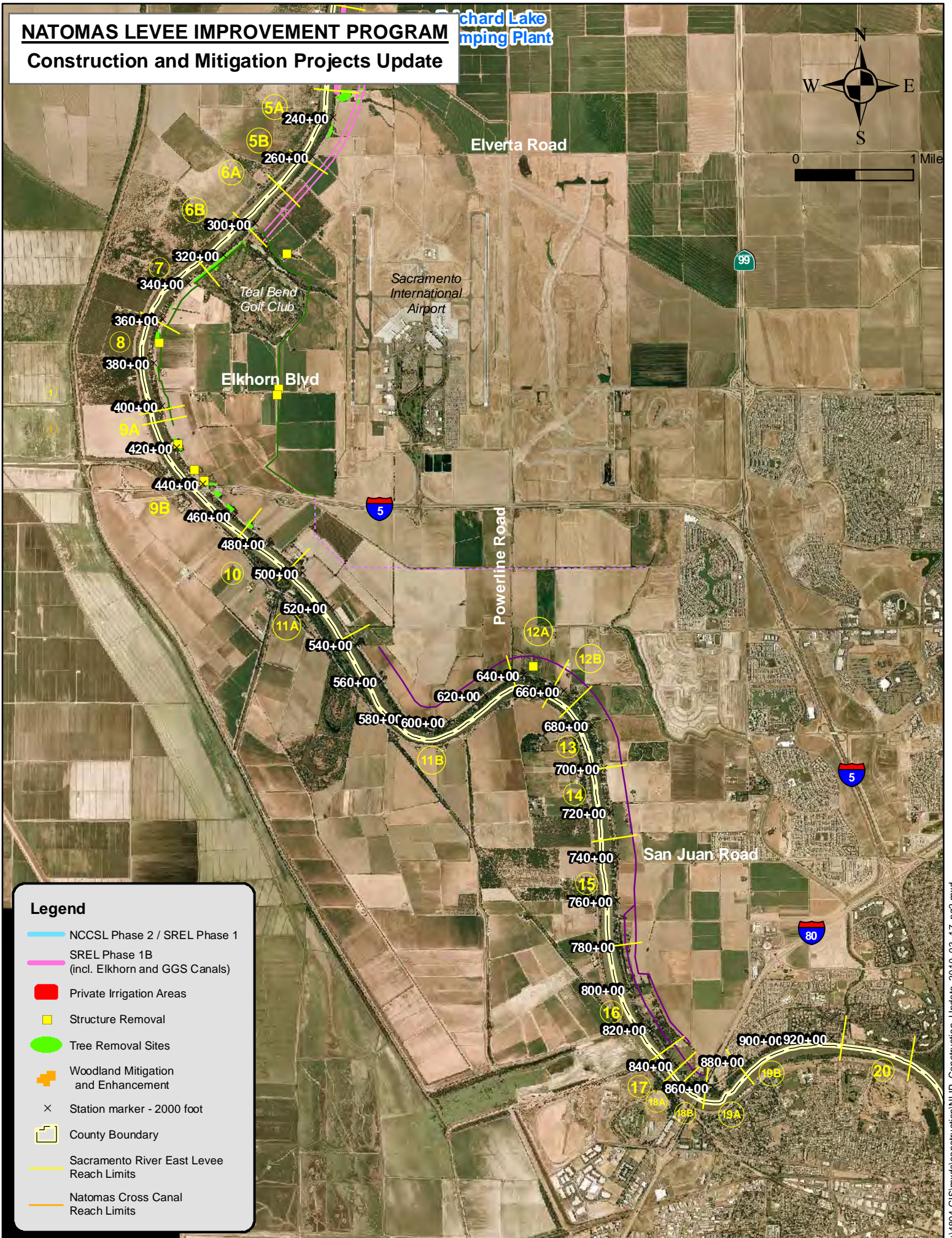
NATOMAS LEVELLEVE IMPROVEMENT PROGRAM

Construction and Mitigation Projects Update

Richard Lake
Pumping Plant



0 1 Mile



Legend

- NCCSL Phase 2 / SREL Phase 1
- SREL Phase 1B (incl. Elkhorn and GGS Canals)
- Private Irrigation Areas
- Structure Removal
- Tree Removal Sites
- + Woodland Mitigation and Enhancement
- × Station marker - 2000 foot
- County Boundary
- Sacramento River East Levee Reach Limits
- Natomas Cross Canal Reach Limits