

Natomas Levee Improvement Program

SAFCA Weekly Construction and Mitigation Projects Update

March 25, 2011

All activity subject to weather

Location	Project	Construction Activity	Traffic Controls & Work Hours
<p>Natomas Cross Canal: from ~1.1 mile east of Hwy 99 at Howsley west to Garden Highway</p> <p>Sacramento River East Levee: from Natomas Cross Canal south to ~.9 miles past Sankey Road</p>	<p>Contract 3980- Levee improvements</p> <p>Sacramento River East Levee- Phase 1- Reach 1</p> <p>Natomas Cross Canal South Levee Phase 2</p>	<p>COMPLETED</p>	
<p>Sacramento River East Levee: from ~.9 miles south of Sankey Road south to ~.5 miles north of Elverta Road.</p> <p>Irrigation and drainage canals ~1 mile north and south of Elverta Road.</p>	<p>Contract 4032- Levee Improvements & Canal Relocations Contractor- Independent Construction</p> <p>Sacramento River East Levee Phase 1B- Reaches 2-4B</p> <p>Upper Elkhorn Irrigation Canal</p> <p>Upper Giant Garter Snake/Drainage Canal</p>	<p><u>Work in Progress</u> None</p> <p><u>Anticipated Work Next Week</u> Erosion control and monitoring.</p>	
<p>Sacramento River East Levee: from ~.5 miles north of Elverta Road south to ~.5 miles past Interstate 5.</p> <p>Natomas Cross Canal ~.5 miles east of Hwy 99, north of Howsley Road. Canals east of Garden Highway from just north of Teal Bend south to Interstate 5</p>	<p>Contract 4046- Levee improvements & Canal relocations Contractor- Nordic Industries</p> <p>Sacramento River East Levee Phase 2B- Reaches 5A-9B</p> <p>Elkhorn Irrigation Canal Phase 2B relocation</p> <p>GGS canal Phase 2A</p> <p>NCC south levee Phase 2B</p>	<p><u>Work in Progress</u> Pipeline work at Reservoir Road (Elkhorn pumping plant). Erosion control.</p> <p><u>Anticipated Work Next Week</u> Pipeline work at Reservoir Road (Elkhorn pumping plant), Schoolhouse pipeline work.</p>	<p>Elverta Road -interim ramp to Garden Highway in place and opened to traffic.</p> <p>Monday-Saturday 6:00 a.m.- 8:00 p.m., Sunday from 7:00 am to 5:00 pm</p> <p>Minor construction traffic from Elverta Road to Reservoir Road.</p> <p>Anticipate AT&T crew activity from Teal Bend frontage to N. Bayou Road, potential traffic control/flagging. Monday-Saturday during daylight hours.</p>

Location	Project	Construction Activity	Traffic Controls & Work Hours
Sacramento River East Levee: east of Garden Highway from Teal Bend south to Interstate 5	<p>Contract 4047- Canal relocation Contractor- Teichert Construction</p> <p>Sacramento River East Levee Phase 2A- Reaches 5A-9B</p> <p>Elkhorn Irrigation Canal Phase 2A relocation</p> <p>Structure demolition, tree removal</p>	<p><u>Work in Progress</u> Erosion control.</p> <p><u>Anticipated Work Next Week</u> Erosion control, construction of turn outs adjacent to canal</p>	No anticipated impacts to traffic.
Sacramento River East Levee: from Teal Bend south to ~.5 miles past Interstate 5. Novak orchard just east of Powerline Road and Garden Highway.	<p>Contract 4044- Tree removal, levee footprint preparation Contractor- W.C. Maloney, Inc.</p> <p>Sacramento River East Levee Phase 2B- Reaches 5A-9B and Phase 3- Reaches 10-15</p>	<p><u>Work in Progress</u> Tree and brush clearing.</p> <p><u>Anticipated Work Next Week</u> Tree and brush clearing.</p>	Minimal impacts to traffic.
Basin-wide	<p>Basin-wide Design Explorations (Crown Borings) and instrumentation readings Contractor- Kleinfelder</p>	<p><u>Work in Progress</u> Data collection from instrumentation and crown borings on Garden Highway between Riego Road and North Bayou Road.</p> <p><u>Anticipated Work Next Week</u> Data collection from instrumentation and crown borings on Garden Highway at Sankey Road and north of Elverta Road.</p>	Traffic control measures (flaggers) will be in place to support borings/readings, brief delays. Contractor working during daylight hours Monday-Friday.
Sacramento River East Levee: from ~.9 miles south of Natomas Cross Canal to ~.7 miles north of Riego Road.	<p>Contract 4055- Woodland Corridor Mitigation and Enhancement Project Contractor- River Partners</p>	<p><u>Work in Progress</u> Maintenance and monitoring of mitigation plantings.</p> <p><u>Anticipated Work Next Week</u> Maintenance and monitoring of mitigation plantings.</p>	No anticipated impacts to traffic.

If you have any questions regarding the project, please visit the SAFCA website at www.safca.org or contact Jay Davis at Gualco Consulting (916) 351-0600 or jdavis@gualco.com

Location	Project	Construction Activity	Traffic Controls & Work Hours
Sacramento River East Levee Phase 3A: from south of I-5 to south of Powerline Road.	Contract 4069- Structure Demolition and Tree Removal Project Contractor- All Clear Inc.	<u>Work in Progress</u> Structure demolition south of I-5 <u>Anticipated Work Next Week</u> structure demolition south of I-5	SMUD placing overhead wire north of I-5, potential brief delays to traffic. AT&T crews transferring wire on overhead poles along the Garden Highway, north of Powerline Road, potential brief delays. Contractor working during daylight hours Monday-Saturday.

Other Flood Control Improvement Activities

Provided below is information regarding other flood control improvements and activities being performed in the Natomas Basin by other agencies

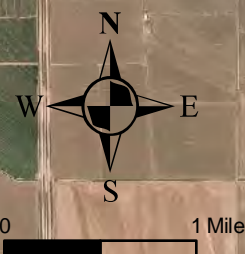
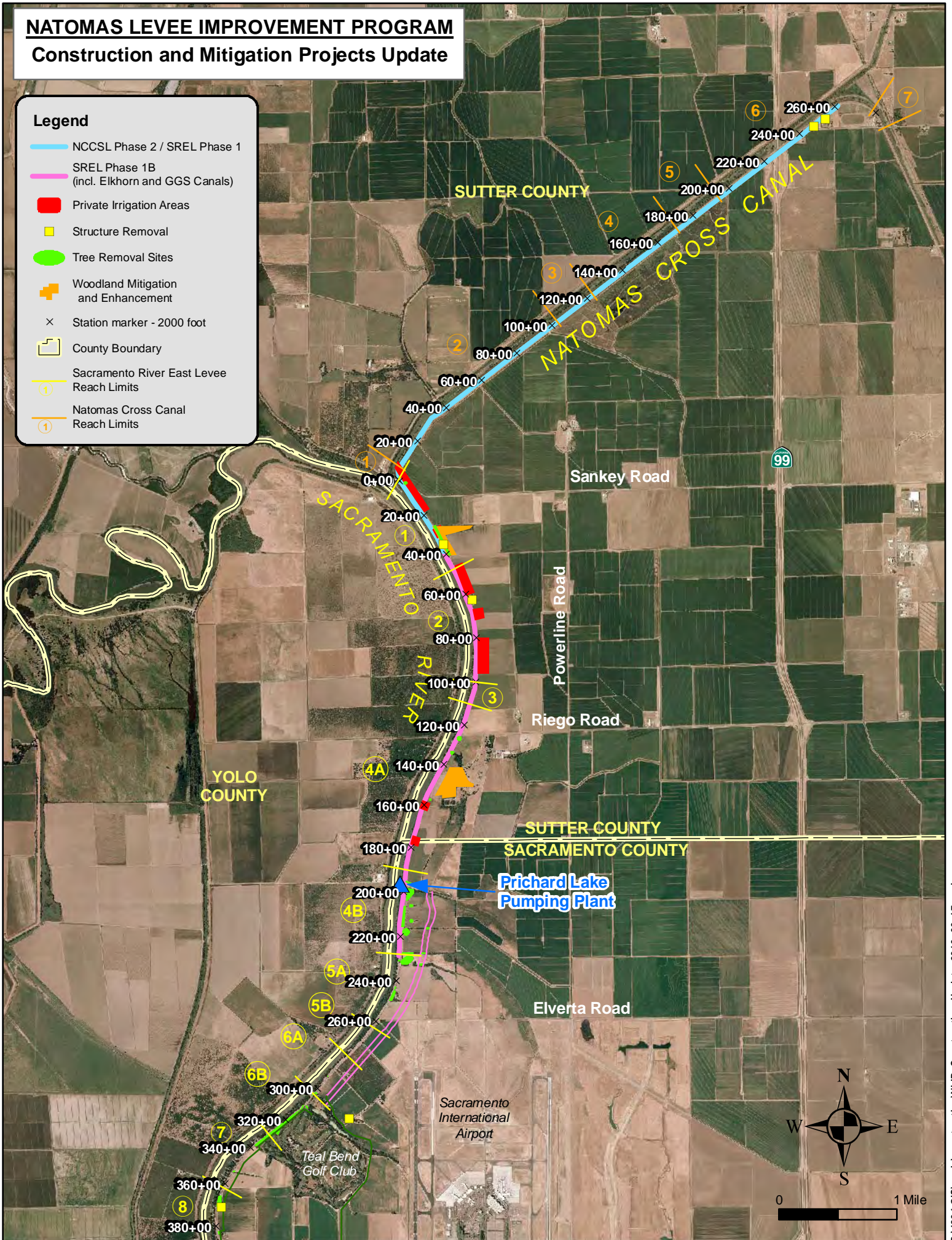
Project	Activity	Traffic Control
U.S. Army Corps of Engineers Natomas Levee Improvement Design Explorations (Sacramento River East Levee, American River North Levee, Natomas East Main Drainage Canal, Pleasant Grove Creek Canal)	<u>Work in Progress</u> Data collection from instrumentation and levee crown borings along Natomas East Main Drainage Canal west levee from Elkhorn Blvd south to Northgate Blvd.	Traffic control measures (flaggers) will be in place to support borings/readings on levee crown, brief delays.

NATOMAS LEVEE IMPROVEMENT PROGRAM

Construction and Mitigation Projects Update

Legend

- NCCSL Phase 2 / SREL Phase 1
- SREL Phase 1B (incl. Elkhorn and GGS Canals)
- Private Irrigation Areas
- Structure Removal
- Tree Removal Sites
- + Woodland Mitigation and Enhancement
- × Station marker - 2000 foot
- County Boundary
- ① Sacramento River East Levee Reach Limits
- ① Natomas Cross Canal Reach Limits



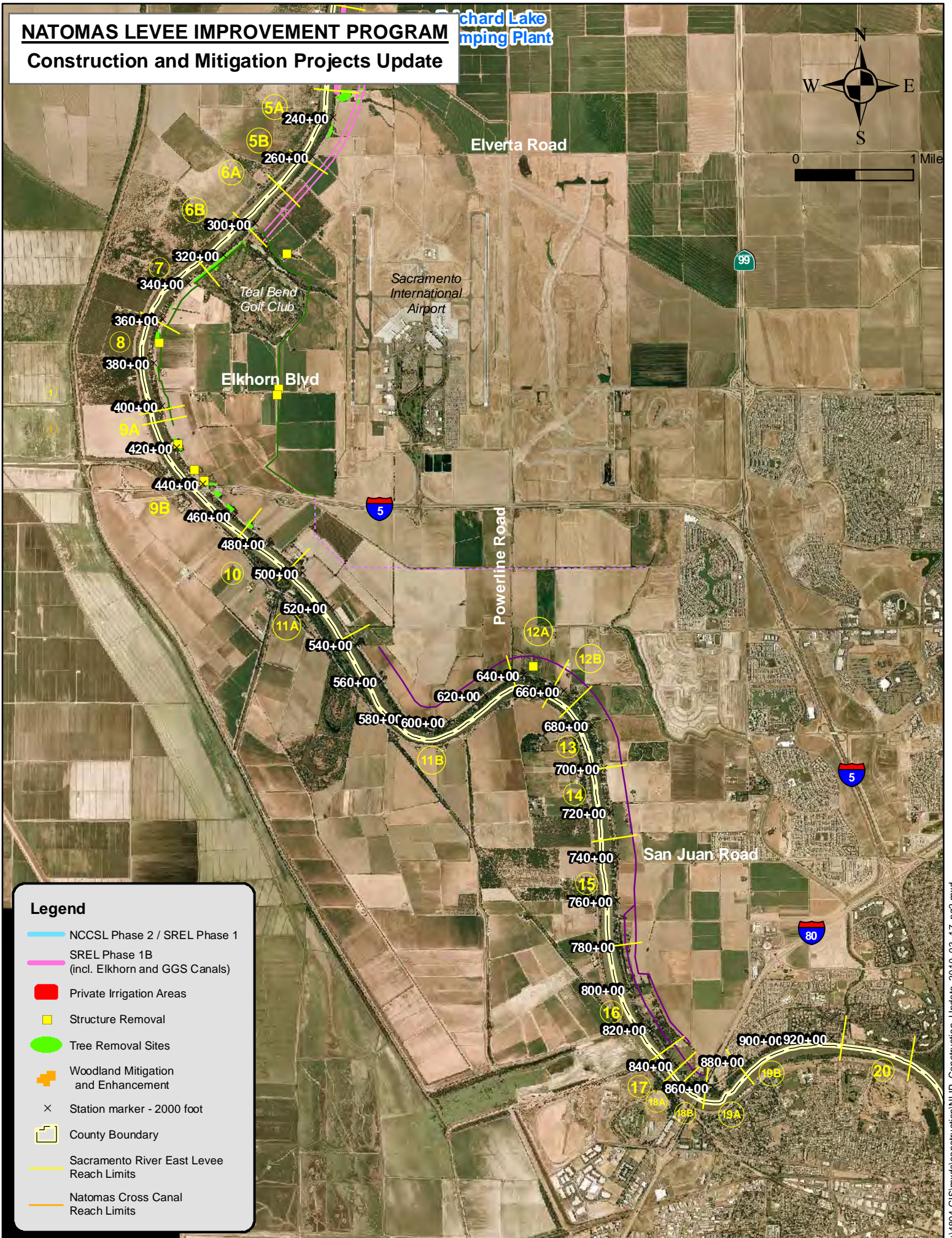
NATOMAS LEVELLEVE IMPROVEMENT PROGRAM

Construction and Mitigation Projects Update

Richard Lake
Pumping Plant



0 1 Mile



Legend

- NCCSL Phase 2 / SREL Phase 1
- SREL Phase 1B (incl. Elkhorn and GGS Canals)
- Private Irrigation Areas
- Structure Removal
- Tree Removal Sites
- + Woodland Mitigation and Enhancement
- × Station marker - 2000 foot
- County Boundary
- Sacramento River East Levee Reach Limits
- Natomas Cross Canal Reach Limits