

Natomas Levee Improvement Program

SAFCA Weekly Construction and Mitigation Projects Update

November 22, 2011

All activity subject to weather

Location	Project	Construction Activity	Traffic Controls & Work Hours
<p>Natomas Cross Canal: from ~1.1 mile east of Hwy 99 at Howsley west to Garden Highway</p> <p>Sacramento River East Levee: from Natomas Cross Canal south to ~.9 miles past Sankey Road</p>	<p>Contract 3980- Levee improvements</p> <p>Sacramento River East Levee-Phase 1- <u>Reach 1</u></p> <p>Natomas Cross Canal South Levee Phase 2</p>	<p>COMPLETED</p>	
<p>Sacramento River East Levee: from ~.9 miles south of Sankey Road south to ~.5 miles north of Elverta Road.</p> <p>Irrigation and drainage canals ~1 mile north and south of Elverta Road.</p>	<p>Contract 4032- Levee Improvements & Canal Relocations Contractor- Independent Construction</p> <p>Sacramento River East Levee Phase 1B- <u>Reaches 2-4B</u></p> <p>Upper Elkhorn Irrigation Canal</p> <p>Upper Giant Garter Snake/Drainage Canal</p>	<p><u>Work in Progress</u> Punch list work.</p> <p><u>Anticipated Work Next Week</u> Punch list work.</p>	<p>Contractor working during daylight hours Monday-Saturday.</p>
<p>Sacramento River East Levee: from ~.5 miles north of Elverta Road south to ~.5 miles past Interstate 5.</p> <p>Natomas Cross Canal ~.5 miles east of Hwy 99, north of Howsley Road. Canals east of Garden Highway from just north of Teal Bend south to Interstate 5</p>	<p>Contract 4046- Levee improvements & Canal relocations Contractor- Nordic Industries</p> <p>Sacramento River East Levee Phase 2B- <u>Reaches 5A-9B</u></p> <p>Elkhorn Irrigation Canal Phase 2B relocation</p> <p>GGS canal Phase 2A</p> <p>NCC south levee Phase 2B</p>	<p><u>Work in Progress</u> Finish grading and gravel patrol road from Elverta to North Bayou.</p> <p>Water side drain installations.</p> <p><u>Anticipated Work Next Week</u> Finish grading and gravel patrol road from Elverta to North Bayou. Erosion control & seeding.</p> <p>Possible roadway marking/stripping at Elverta.</p>	<p>Monday-Saturday 6:00 a.m.- 8:00 p.m., Sunday from 7:00 am to 5:00 pm for earthwork activities.</p> <p>Minor construction traffic from Elverta Road to Reservoir Road.</p> <p>Possible lane closures and flagmen supporting drainage crossings, anticipate brief delays.</p>

Location	Project	Construction Activity	Traffic Controls & Work Hours
<p>Sacramento River East Levee: from ~.5 miles south of Interstate 5 to ~.5 miles south of Powerline Road.</p>	<p>Contract 4092- Levee improvements Contractor- Sukut Construction</p> <p>Sacramento River East Levee Phase 3- <u>Reaches 10-12B</u></p>	<p><u>Work in Progress</u> Levee embankment from I-5 to just south of Power Line Rd.</p> <p>Water side drain installations.</p> <p><u>Anticipated Work Next Week</u> Levee embankment and grading from I-5 to just south of Power Line Rd.</p> <p>Pumping plant 5 backfilling.</p> <p>Riverside canal embankment.</p> <p>Power Line Rd. embankment and lime treatment of ramp.</p>	<p>Contractor working daylight hours on earthwork Monday-Saturday 6:00 a.m.-8:00 p.m.</p> <p>Possible single lane closures and flagmen supporting drainage crossing installation, anticipate brief delays.</p> <p><u>Power Line Road is closed at Garden Highway until December 30, 2011, detour signage provided.</u></p>
<p>Sacramento River East Levee: east of Garden Highway from Teal Bend south to Interstate 5</p>	<p>Contract 4047- Canal relocation Contractor- Teichert Construction</p> <p>Elkhorn Irrigation Canal Phase 2A relocation</p> <p>Structure demolition, tree removal</p>	<p><u>Work in Progress</u> None.</p> <p><u>Anticipated Work Next Week</u> None.</p>	<p>No impacts to traffic anticipated.</p>
<p>Sacramento River East Levee: from ~.9 miles south of Natomas Cross Canal to ~.7 miles north of Riego Road.</p>	<p>Contract 4055- Woodland Corridor Mitigation and Enhancement Project Contractor- River Partners</p>	<p><u>Work in Progress</u> Maintenance and monitoring of mitigation plantings.</p> <p><u>Anticipated Work Next Week</u> Maintenance and monitoring of mitigation plantings.</p>	<p>No anticipated impacts to traffic.</p>
<p>Sacramento River East Levee Phase 3A: from south of I-5 to south of Powerline Road.</p>	<p>Contract 4069- Structure Demolition and Tree Removal Project Contractor- All Clear Inc.</p>	<p><u>Work in Progress</u> Structure demolition south of I-5</p> <p><u>Anticipated Work Next Week</u> Structure demolition south of I-5</p>	<p>Contractor working during daylight hours Monday-Sunday.</p>

If you have any questions regarding the project, please visit the SAFCA website at www.safca.org or contact Jay Davis at Gualco Consulting (916) 351-0600 or jdavis@gualco.com

Project	Activity	Traffic Control
Basin-wide	Basin-wide Design Explorations (Crown Borings) and instrumentation readings Contractor- Kleinfelder	Work in Progress Data collection from instrumentation and crown borings on Garden Highway between Riego Road and North Bayou Road. Anticipated Work Next Week Data collection from instrumentation and crown borings on Garden Highway between Riego Road and North Bayou Road.

Sacramento River East Levee: Between Sankey Road and Teal Bend Golf Club	Sacramento River East Levee Reaches 1-6A- Native Grass Establishment Contractors- Restoration Resources (SREL 1-4B) and River Partners (SREL 5A-6A)	Work in Progress Seeding levee slopes SREL 5A-6A. Anticipated Work Next Week Seeding levee slopes SREL 5A-6A.
--	---	--

Sacramento River East Levee: Between Sankey Road and Riego Road, approximately 300 feet east of levee.	Sacramento River East Levee Reach 2- Irrigation well installation	Work in Progress None. Anticipated Work Next Week None.
--	--	--

Other Flood Control Improvement Activities

Provided below is information regarding other flood control improvements and activities being performed in the Natomas Basin by other agencies

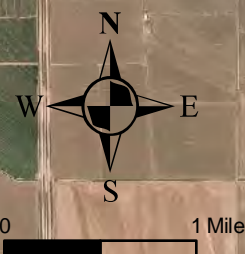
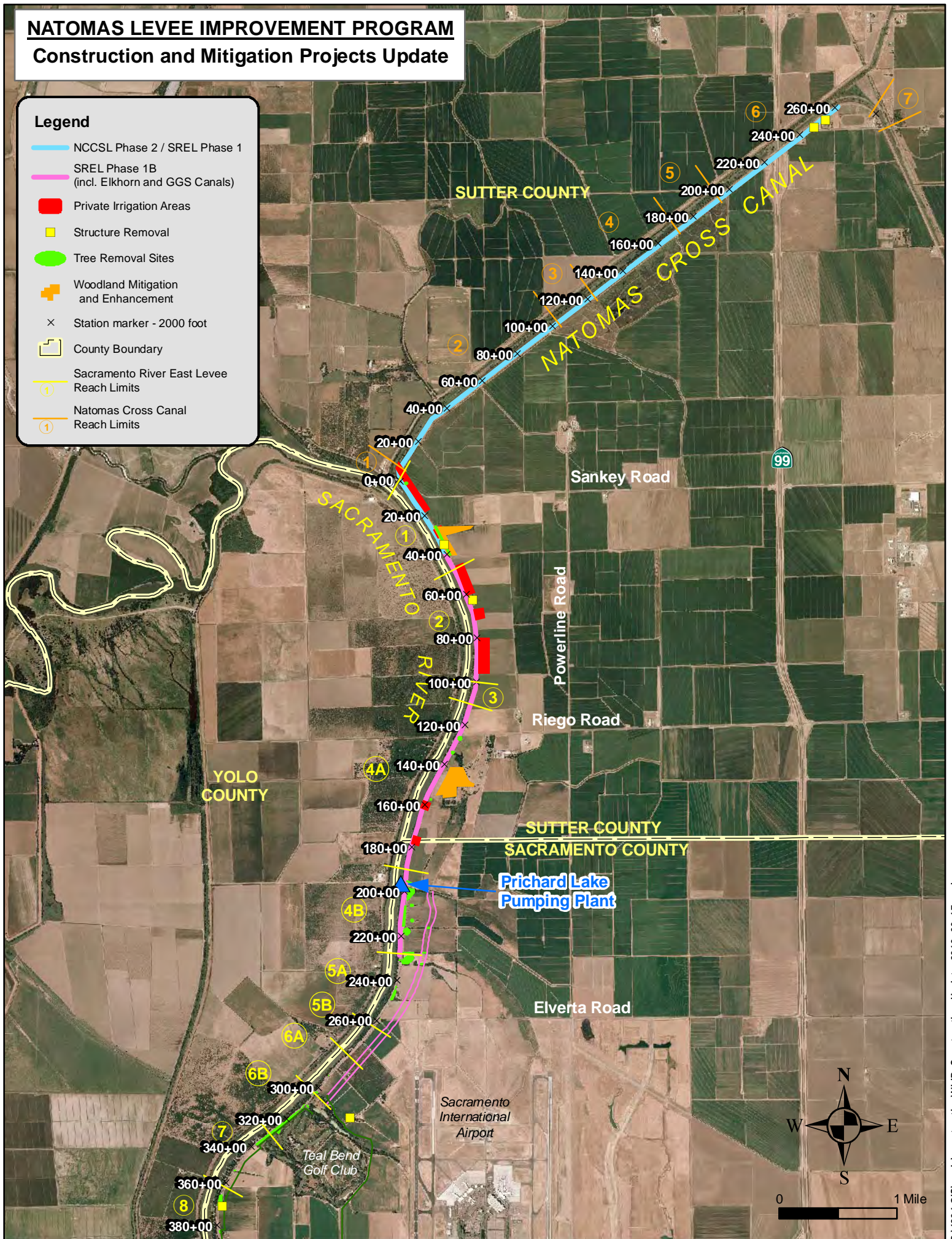
Project	Activity	Traffic Control
U.S. Army Corps of Engineers Natomas Levee Improvement Design Explorations (Sacramento River East Levee, American River North Levee, Natomas East Main Drainage Canal, Pleasant Grove Creek Canal)	Data collection from instrumentation and levee crown borings along Natomas East Main Drainage Canal west levee from Elkhorn Blvd south to Northgate Blvd and along Garden Highway east levee between Power Line Road and Northgate Blvd.	Traffic control measures (flaggers) will be in place to support borings/readings on levee crown, brief delays.
U.S. Army Corps of Engineers Sacramento River Bank Protection Project	Erosion control work along the bank of the Sacramento River east levee, approximately 1/2 mile north of Riego. Potential haul traffic next week of rip-rap material.	

NATOMAS LEVEE IMPROVEMENT PROGRAM

Construction and Mitigation Projects Update

Legend

- NCCSL Phase 2 / SREL Phase 1
- SREL Phase 1B (incl. Elkhorn and GGS Canals)
- Private Irrigation Areas
- Structure Removal
- Tree Removal Sites
- + Woodland Mitigation and Enhancement
- × Station marker - 2000 foot
- County Boundary
- Sacramento River East Levee Reach Limits
- Natomas Cross Canal Reach Limits



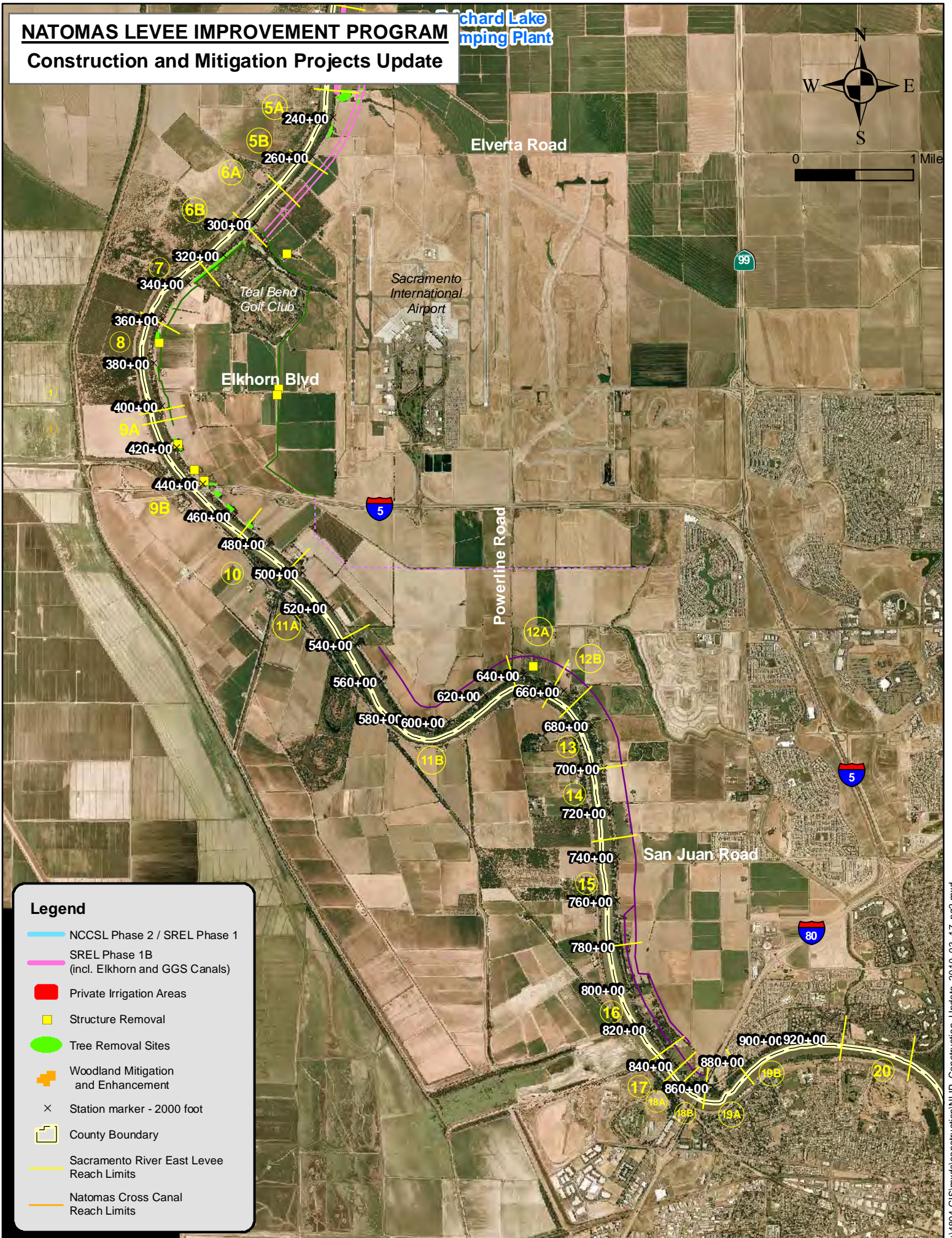
NATOMAS LEVELLEVE IMPROVEMENT PROGRAM

Construction and Mitigation Projects Update

Richard Lake
Pumping Plant



0 1 Mile



Legend

- NCCSL Phase 2 / SREL Phase 1
- SREL Phase 1B (incl. Elkhorn and GGS Canals)
- Private Irrigation Areas
- Structure Removal
- Tree Removal Sites
- + Woodland Mitigation and Enhancement
- × Station marker - 2000 foot
- County Boundary
- Sacramento River East Levee Reach Limits
- Natomas Cross Canal Reach Limits