

**Natomas Levee Improvement Program**

SAFCA Weekly Construction and Mitigation Projects Update

January 7, 2011

Location	Project	Construction Activity	Traffic Controls & Work Hours
<p>Sacramento River East Levee: from ~.9 miles south of Sankey Road south to ~.5 miles north of Elverta Road.</p> <p>Irrigation and drainage canals ~1 mile north and south of Elverta Road.</p>	<p><b>Contract 4032- Levee Improvements &amp; Canal Relocations</b>  <b>Contractor- Independent Construction</b></p> <p><b>Sacramento River East Levee Phase 1B- Reaches 2-4B</b></p> <p><b>Upper Elkhorn Irrigation Canal</b></p> <p><b>Upper Giant Garter Snake/Drainage Canal</b></p>	<p><b><u>Work in Progress</u></b>                      Erosion Control</p> <p><b><u>Anticipated Work Next Week</u></b>  <b><i>Subject to weather:</i></b>                      Erosion Control- straw levee slopes from Garden Hwy.                      Minor grading and base rock to obtain levee inspection access points.</p>	<p>Subject to Weather</p> <p>Traffic control on Garden Hwy/Riego Road (flaggers) potential for brief delays, during placement of hydroseeding from the Garden Highway</p> <p>Contractor working during daylight hours Monday-Saturday 6:00 a.m.- 8:00 p.m.</p>
<p>Sacramento River East Levee: from ~.5 miles north of Elverta Road south to ~.5 miles past Interstate 5.</p> <p>Natomas Cross Canal ~.5 miles east of Hwy 99, north of Howsley Road. Canals east of Garden Highway from just north of Teal Bend south to Interstate 5</p>	<p><b>Contract 4046- Levee improvements &amp; Canal relocations</b>  <b>Contractor- Nordic Industries</b></p> <p><b>Sacramento River East Levee Phase 2B- Reaches 5A-9B</b></p> <p><b>Elkhorn Irrigation Canal Phase 2B relocation</b></p> <p><b>GGs canal Phase 2A</b></p> <p><b>NCC south levee Phase 2B</b></p>	<p><b><u>Work in Progress</u></b>                      Minimal work due to wet site conditions.                      Erosion control, borrow site dewatering</p> <p><b><u>Anticipated Work Next Week</u></b>  <b><i>Subject to weather:</i></b>                      Erosion control and borrow site dewatering.                      Elkhorn canal dewatering.</p>	<p>Elverta Road -interim ramp to Garden Highway in place and opened to traffic.</p> <p>Monday-Saturday 6:00 a.m.- 8:00 p.m., Sunday from 7:00 am to 5:00 pm- WEATHER PERMITTING</p> <p>Anticipate AT&amp;T crew activity from Teal Bend frontage to N. Bayou Road, potential traffic control/flagging. Monday-Saturday during daylight hours.</p>

Location	Project	Construction Activity	Traffic Controls & Work Hours
Sacramento River East Levee: east of Garden Highway from Teal Bend south to Interstate 5	<p><b>Contract 4047- Canal relocation</b>  <b>Contractor- Teichert Construction</b></p> <p><b>Sacramento River East Levee Phase 2A- Reaches 5A-9B</b></p> <p><b>Elkhorn Irrigation Canal Phase 2A relocation</b></p> <p><b>Structure demolition, tree removal</b></p>	<p><b><u>Work in Progress</u></b>                      Well abandonment, misc. grading and clean-up.</p> <p><b><u>Anticipated Work Next Week</u></b>                      Well abandonment, misc. grading and clean-up.</p>	<p>Minimal impacts to traffic.</p> <p>Contractor working during daylight hours Monday-Friday.</p>
Sacramento River East Levee: from Teal Bend south to ~.5 miles past Interstate 5. Novak orchard just east of Powerline Road and Garden Highway.	<p><b>Contract 4044- Tree removal, levee footprint preparation</b>  <b>Contractor- W.C. Maloney, Inc.</b></p> <p><b>Sacramento River East Levee Phase 2B- Reaches 5A-9B and Phase 3- Reaches 10-15</b></p>	<p><b><u>Work in Progress</u></b>                      Tree and brush clearing from Elkhorn Blvd to 1/2 mile south of I-5.</p> <p><b><u>Anticipated Work Next Week</u></b>  <b><i>Subject to weather:</i></b>                      Tree and brush clearing from Elkhorn Blvd to 1/2 mile south of I-5.</p>	<p>Minimal impacts to traffic.</p> <p>Contractor working during daylight hours Monday-Saturday.</p>
Basin-wide	<p><b>Basin-wide Design Explorations (Crown Borings) and instrumentation readings</b>  <b>Contractor- Kleinfelder</b></p>	<p><b><u>Work in Progress</u></b>                      Data collection from instrumentation and crown borings on Garden Highway between Riego Road and North Bayou Road.</p> <p><b><u>Anticipated Work Next Week</u></b>  <b><i>Subject to weather:</i></b>                      Data collection from instrumentation and crown borings on Garden Highway at Sankey Road and south of Elverta Road.</p>	<p>Traffic control measures (flaggers) will be in place to support borings/readings, brief delays. Contractor working during daylight hours Monday-Friday.</p>
Sacramento River East Levee: from ~.9 miles south of Natomas Cross Canal to ~.7 miles north of Riego Road.	<p><b>Contract 4055- Woodland Corridor Mitigation and Enhancement Project</b>  <b>Contractor- River Partners</b></p>	<p><b><u>Work in Progress</u></b>                      Maintenance and monitoring of mitigation plantings.</p> <p><b><u>Anticipated Work Next Week</u></b>                      Maintenance and monitoring of mitigation plantings.</p>	<p>No anticipated impacts to traffic.</p>

If you have any questions regarding the project, please visit the SAFCA website at [www.safca.org](http://www.safca.org) or contact Jay Davis at Gualco Consulting (916) 351-0600 or [jdavis@gualco.com](mailto:jdavis@gualco.com)

Location	Project	Construction Activity	Traffic Controls & Work Hours
Sacramento River East Levee Phase 3A: from south of I-5 to south of Powerline Road.	<b>Contract 4069- Structure Demolition and Tree Removal Project</b> <b>Contractor- All Clear Inc.</b>	<p><b><u>Work in Progress</u></b> Structure demolition south of I-5.</p> <p><b><u>Anticipated Work Next Week</u></b> Structure demolition south of I-5.</p>	No anticipated impacts to traffic. Contractor working during daylight hours Monday-Saturday.

**Other Flood Control Improvement Activities**

Provided below is information regarding other flood control improvements and activities being performed in the Natomas Basin by other agencies

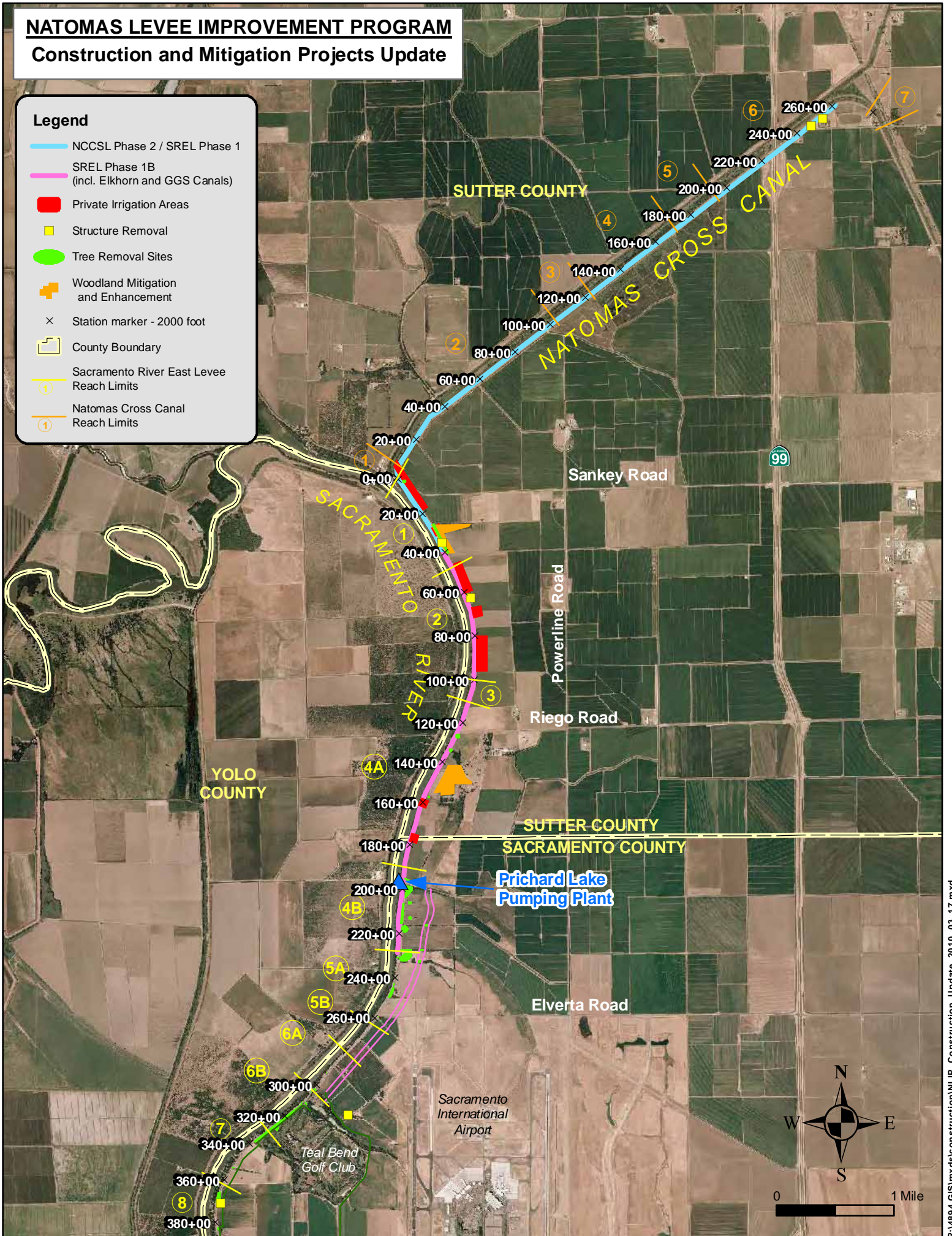
Project	Activity	Traffic Control
<b>U.S. Army Corps of Engineers</b> <b>Natomas Levee Improvement Design Explorations</b> (Sacramento River East Levee, American River North Levee, Natomas East Main Drainage Canal, Pleasant Grove Creek Canal)	<p><b><u>Work in Progress</u></b>            Data collection from instrumentation and levee crown borings along Natomas East Main Drainage Canal west levee from Elkhorn Blvd south to Northgate Blvd. Boring activity will continue through January.</p>	Traffic control measures (flaggers) will be in place to support borings/readings on levee crown, brief delays.

# NATOMAS LEVELLEVE IMPROVEMENT PROGRAM

## Construction and Mitigation Projects Update

### Legend

- NCCSL Phase 2 / SREL Phase 1
- SREL Phase 1B (incl. Elkhorn and GGS Canals)
- Private Irrigation Areas
- Structure Removal
- Tree Removal Sites
- + Woodland Mitigation and Enhancement
- × Station marker - 2000 foot
- County Boundary
- ① Sacramento River East Levee Reach Limits
- ② Natomas Cross Canal Reach Limits



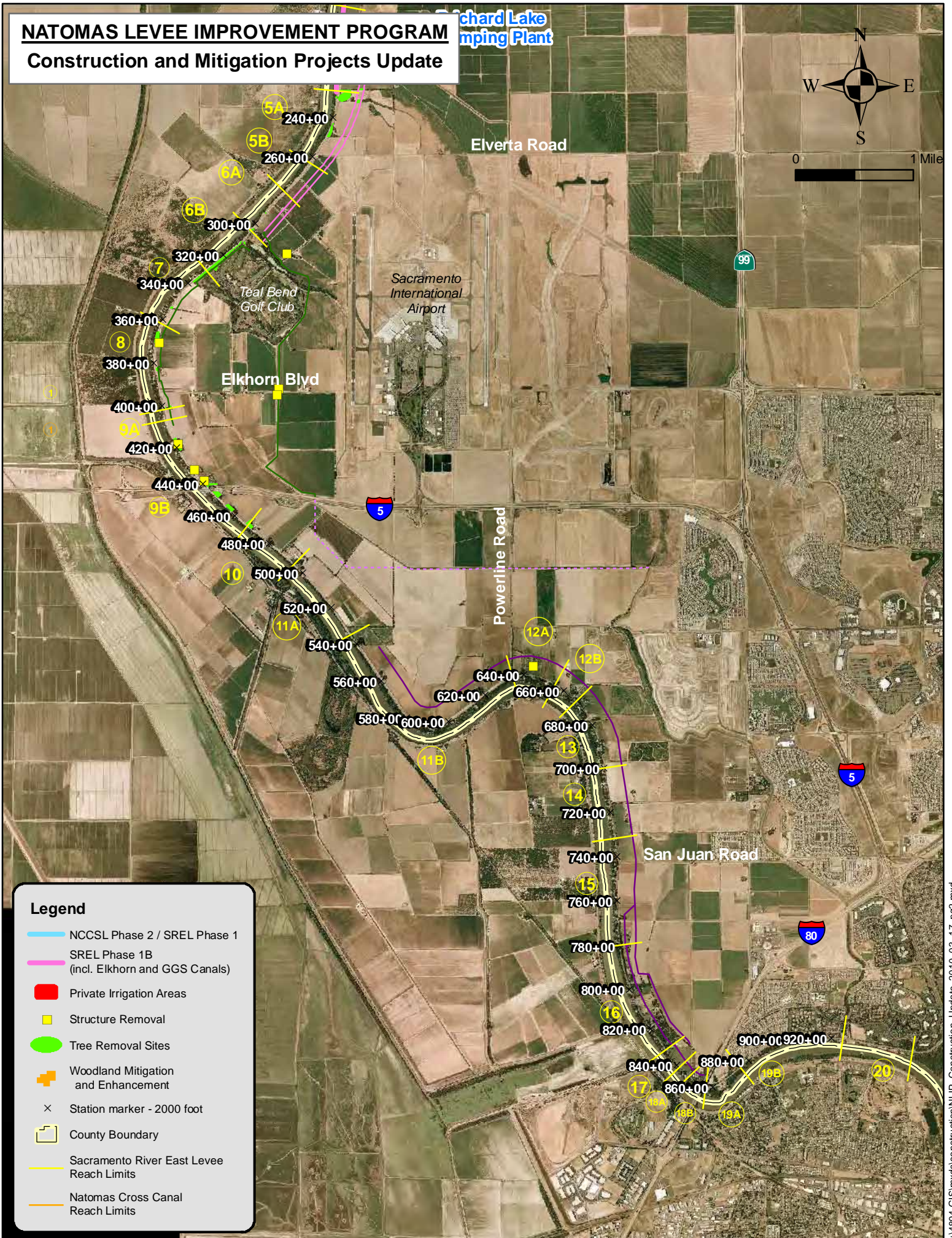
# NATOMAS LEVELLEVE IMPROVEMENT PROGRAM

## Construction and Mitigation Projects Update

Richard Lake  
Pumping Plant



0 1 Mile



**Legend**

- NCCSL Phase 2 / SREL Phase 1
- SREL Phase 1B (incl. Elkhorn and GGS Canals)
- Private Irrigation Areas
- Structure Removal
- Tree Removal Sites
- + Woodland Mitigation and Enhancement
- × Station marker - 2000 foot
- County Boundary
- Sacramento River East Levee Reach Limits
- Natomas Cross Canal Reach Limits