

Natomas Levee Improvement Program

SAFCA Weekly Construction and Mitigation Projects Update

January 28, 2011

All activity subject to weather

| Location | Project | Construction Activity | Traffic Controls & Work Hours |
|---|--|---|--|
| <p>Sacramento River East Levee: from ~.9 miles south of Sankey Road south to ~.5 miles north of Elverta Road.</p> <p>Irrigation and drainage canals ~1 mile north and south of Elverta Road.</p> | <p>Contract 4032- Levee Improvements & Canal Relocations Contractor- Independent Construction</p> <p>Sacramento River East Levee Phase 1B- Reaches 2-4B</p> <p>Upper Elkhorn Irrigation Canal</p> <p>Upper Giant Garter Snake/Drainage Canal</p> | <p><u>Work in Progress</u> Erosion control and monitoring. Minor grading and base rock to obtain levee inspection access points.</p> <p><u>Anticipated Work Next Week</u> Erosion control and monitoring. Minor grading and base rock to obtain levee inspection access points.</p> | <p>Traffic control on Garden Hwy/Riego Road (flaggers) potential for brief delays, during placement of hydroseeding from the Garden Highway.</p> <p>Contractor working during daylight hours Monday-Saturday 6:00 a.m.- 8:00 p.m.</p> |
| | | | |
| <p>Sacramento River East Levee: from ~.5 miles north of Elverta Road south to ~.5 miles past Interstate 5.</p> <p>Natomas Cross Canal ~.5 miles east of Hwy 99, north of Howsley Road. Canals east of Garden Highway from just north of Teal Bend south to Interstate 5</p> | <p>Contract 4046- Levee improvements & Canal relocations Contractor- Nordic Industries</p> <p>Sacramento River East Levee Phase 2B- Reaches 5A-9B</p> <p>Elkhorn Irrigation Canal Phase 2B relocation</p> <p>GGs canal Phase 2A</p> <p>NCC south levee Phase 2B</p> | <p><u>Work in Progress</u> Pipeline work at Reservoir Road (Elkhorn pumping plant). Erosion control.</p> <p><u>Anticipated Work Next Week</u> Pipeline work at Reservoir Road (Elkhorn pumping plant). Elkhorn Canal dewatering, Schoolhouse pipeline.</p> | <p>Elverta Road -interim ramp to Garden Highway in place and opened to traffic.</p> <p>Monday-Saturday 6:00 a.m.- 8:00 p.m., Sunday from 7:00 am to 5:00 pm</p> <p>Minor construction traffic from Elverta Road to Reservoir Road.</p> <p>Anticipate AT&T crew activity from Teal Bend frontage to N. Bayou Road, potential traffic control/flagging. Monday-Saturday during daylight hours.</p> |

| Location | Project | Construction Activity | Traffic Controls & Work Hours |
|---|---|--|--|
| Sacramento River East Levee: east of Garden Highway from Teal Bend south to Interstate 5 | <p>Contract 4047- Canal relocation Contractor- Teichert Construction</p> <p>Sacramento River East Levee Phase 2A- Reaches 5A-9B</p> <p>Elkhorn Irrigation Canal Phase 2A relocation</p> <p>Structure demolition, tree removal</p> | <p><u>Work in Progress</u> Erosion control.</p> <p><u>Anticipated Work Next Week</u> Erosion control, irrigation box setting.</p> | <p>Minimal impacts to traffic.</p> <p>Contractor working during daylight hours Monday-Friday.</p> |
| Sacramento River East Levee: from Teal Bend south to ~.5 miles past Interstate 5. Novak orchard just east of Powerline Road and Garden Highway. | <p>Contract 4044- Tree removal, levee footprint preparation Contractor- W.C. Maloney, Inc.</p> <p>Sacramento River East Levee Phase 2B- Reaches 5A-9B and Phase 3- Reaches 10-15</p> | <p><u>Work in Progress</u> Tree and brush clearing from north of I-5 to Powerline Road.</p> <p><u>Anticipated Work Next Week</u> Tree and brush clearing from north of I-5 to Powerline Road.</p> | <p>Minimal impacts to traffic.</p> <p>Contractor working during daylight hours Monday-Saturday.</p> |
| Basin-wide | <p>Basin-wide Design Explorations (Crown Borings) and instrumentation readings Contractor- Kleinfelder</p> | <p><u>Work in Progress</u> Data collection from instrumentation and crown borings on Garden Highway between Riego Road and North Bayou Road.</p> <p><u>Anticipated Work Next Week</u> Data collection from instrumentation and crown borings on Garden Highway at Sankey Road and north of Elverta Road.</p> | <p>Traffic control measures (flaggers) will be in place to support borings/readings, brief delays. Contractor working during daylight hours Monday-Friday.</p> |
| Sacramento River East Levee: from ~.9 miles south of Natomas Cross Canal to ~.7 miles north of Riego Road. | <p>Contract 4055- Woodland Corridor Mitigation and Enhancement Project Contractor- River Partners</p> | <p><u>Work in Progress</u> Maintenance and monitoring of mitigation plantings.</p> <p><u>Anticipated Work Next Week</u> Maintenance and monitoring of mitigation plantings.</p> | <p>No anticipated impacts to traffic.</p> |

If you have any questions regarding the project, please visit the SAFCA website at www.safca.org or contact Jay Davis at Gualco Consulting (916) 351-0600 or jdavis@gualco.com

| Location | Project | Construction Activity | Traffic Controls & Work Hours |
|---|--|---|--|
| Sacramento River East Levee Phase 3A: from south of I-5 to south of Powerline Road. | Contract 4069- Structure Demolition and Tree Removal Project Contractor- All Clear Inc. | <p><u>Work in Progress</u> Structure demolition south of I-5.</p> <p><u>Anticipated Work Next Week</u> Structure demolition south of I-5.</p> | <p>SMUD to commence setting of new utility poles on east "land" side of Garden Highway ~ 2 miles south of I-5. Lane closure and traffic control, anticipate brief traffic delays.</p> <p>Contractor working during daylight hours Monday-Saturday.</p> |

Other Flood Control Improvement Activities

Provided below is information regarding other flood control improvements and activities being performed in the Natomas Basin by other agencies

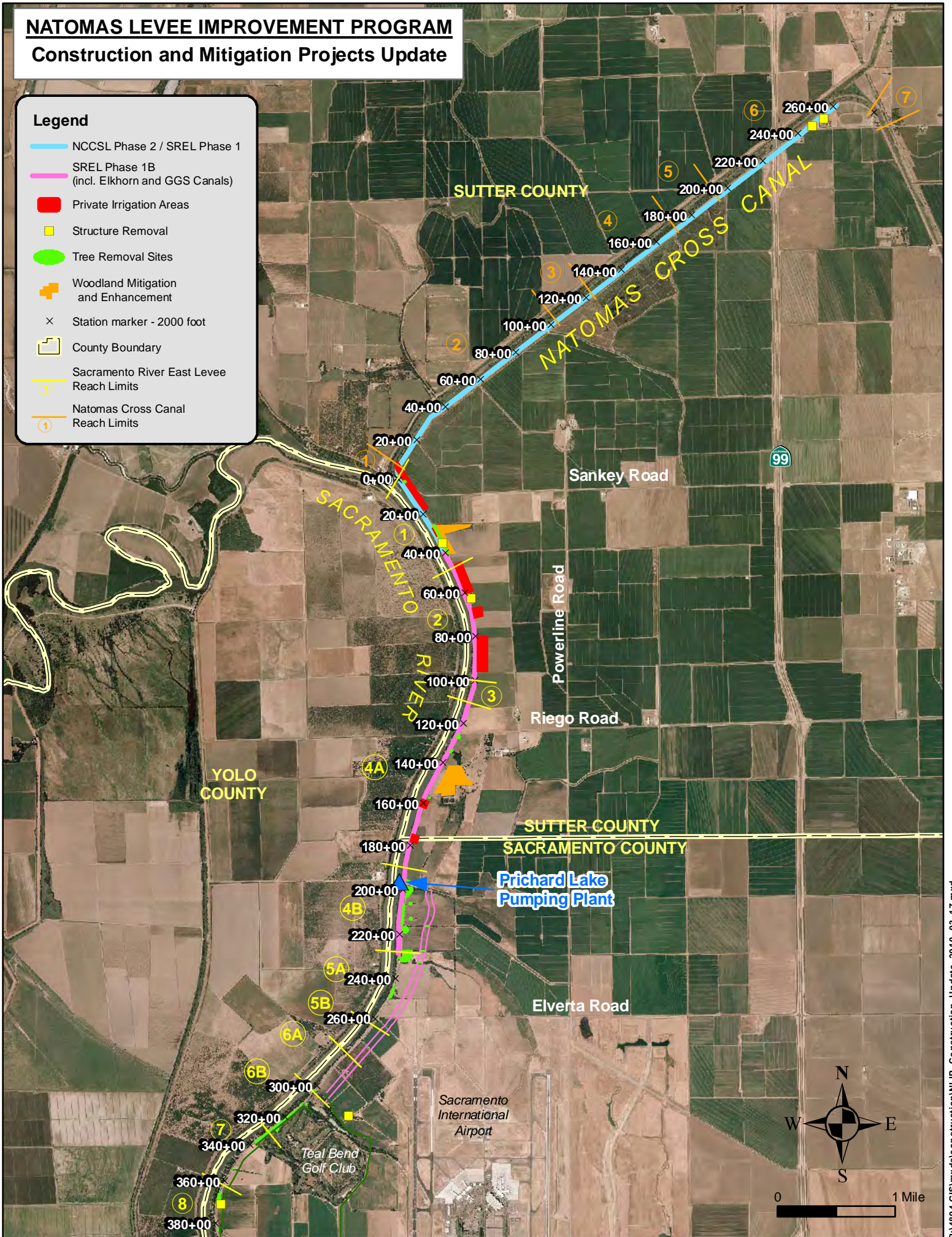
| Project | Activity | Traffic Control |
|---|---|---|
| <p>U.S. Army Corps of Engineers Natomas Levee Improvement Design Explorations (Sacramento River East Levee, American River North Levee, Natomas East Main Drainage Canal, Pleasant Grove Creek Canal)</p> | <p><u>Work in Progress</u> Data collection from instrumentation and levee crown borings along Natomas East Main Drainage Canal west levee from Elkhorn Blvd south to Northgate Blvd. Boring activity will continue through December.</p> | <p>Traffic control measures (flaggers) will be in place to support borings/readings on levee crown, brief delays.</p> |

NATOMAS LEVEE IMPROVEMENT PROGRAM

Construction and Mitigation Projects Update

Legend

- NCCSL Phase 2 / SREL Phase 1
- SREL Phase 1B (incl. Elkhorn and GGS Canals)
- Private Irrigation Areas
- Structure Removal
- Tree Removal Sites
- + Woodland Mitigation and Enhancement
- × Station marker - 2000 foot
- County Boundary
- ① Sacramento River East Levee Reach Limits
- ① Natomas Cross Canal Reach Limits



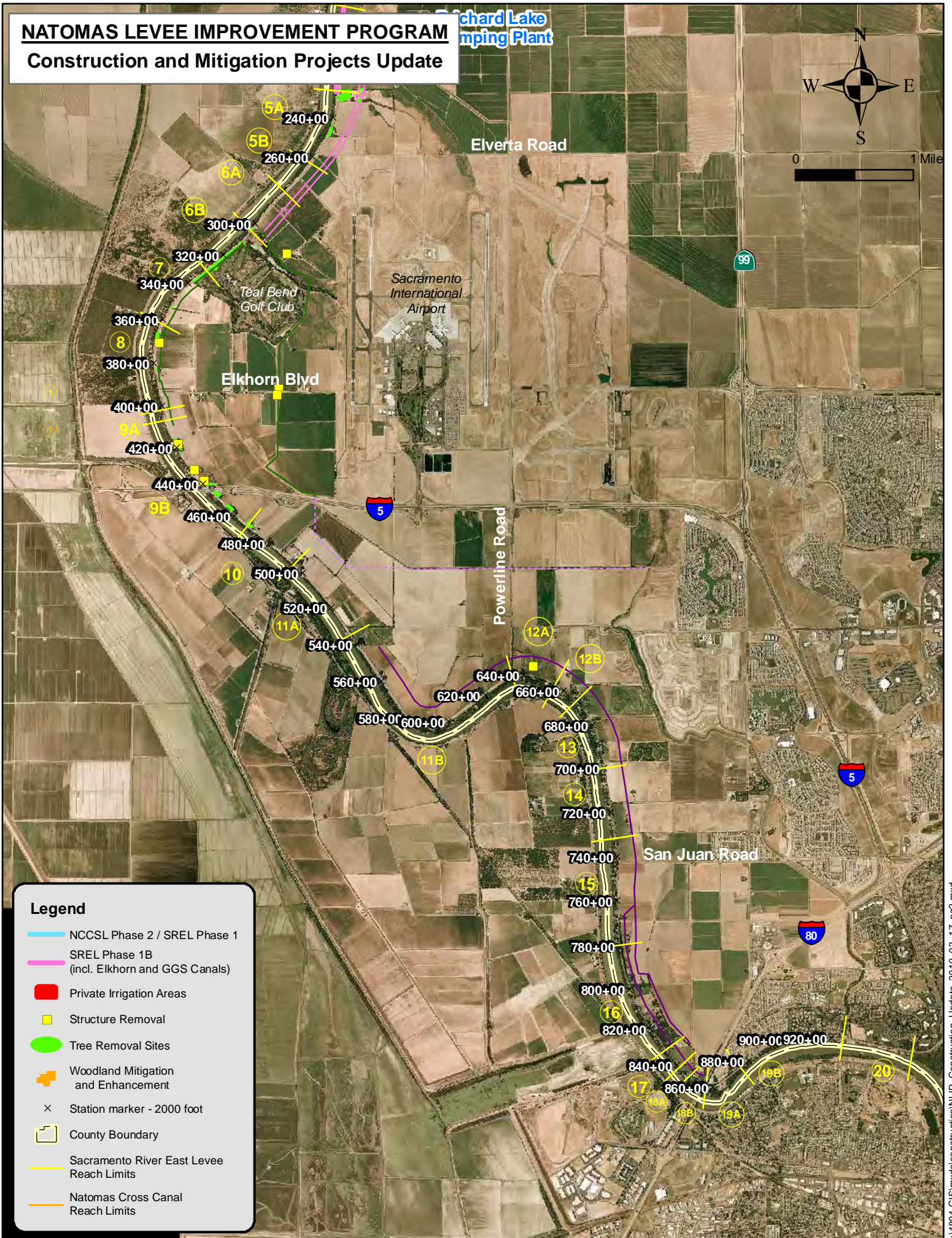
NATOMAS LEVELLEVE IMPROVEMENT PROGRAM

Richard Lake
Pumping Plant

Construction and Mitigation Projects Update



0 1 Mile



Legend

- NCCSL Phase 2 / SREL Phase 1
- SREL Phase 1B (incl. Elkhorn and GGS Canals)
- Private Irrigation Areas
- Structure Removal
- Tree Removal Sites
- Woodland Mitigation and Enhancement
- Station marker - 2000 foot
- County Boundary
- Sacramento River East Levee Reach Limits
- Natomas Cross Canal Reach Limits