

**Natomas Levee Improvement Program**  
 Weekly Construction and Mitigation Projects Update  
 September 3, 2010

Location	Project	Construction Activity	Traffic Controls & Work Hours
<p>Natomas Cross Canal: from ~1.1 mile east of Hwy 99 at Howsley west to Garden Hwy.</p> <p>Sacramento River East Levee: from Natomas Cross Canal south to ~ .9 miles past Sankey Road.</p>	<p><b>Contract 3980- Levee Improvements Contractor- Teichert Construction</b></p> <p><b>Sacramento River East Levee Phase 1- Reach 1</b></p> <p><b>Natomas Cross Canal South Levee Phase 2</b></p>	<p><b><u>Work in Progress</u></b> Punchlist work.</p> <p><b><u>Anticipated Work Next Week</u></b> Punchlist work.</p>	<p>No impacts to traffic.</p> <p>Contractor working during daylight hours, between 6:00 a.m.- 8:00 p.m.</p>
<p>Sacramento River East Levee: from ~.9 miles south of Sankey Road south to ~.5 miles north of Elverta Road.</p> <p>Irrigation and drainage canals ~1 mile north and south of Elverta Road.</p>	<p><b>Contract 4032- Levee Improvements &amp; Canal Relocations Contractor- Independent Construction</b></p> <p><b>Sacramento River East Levee Phase 1B- Reaches 2-4B</b></p> <p><b>Upper Elkhorn Irrigation Canal</b></p> <p><b>Upper Giant Garter Snake/Drainage Canal</b></p>	<p><b><u>Work in Progress</u></b> Levee embankment and cutoff wall installation north and south of Riego Road. Levee foundation and canal construction north and south of Elverta Road.</p> <p><b><u>Anticipated Work Next Week</u></b> Levee embankment and cutoff wall installation north of Riego Road. Levee foundation and canal construction north and south of Elverta Road.</p>	<p>Road closure of Riego Rd at Garden Highway until 10/1/10, Power Line Rd to Sankey Road or Elverta Road will be available as detour routes during this time period. Traffic control on Elverta Rd, east of Garden Highway, including temporary detour road.</p> <p>Nighttime cutoff wall installation not anticipated at this time. Contractor working during daylight hours 6:00 a.m.- 8:00 p.m.</p>
<p>Sacramento River East Levee: from ~.5 miles north of Elverta Road south to ~.5 miles past Interstate 5.</p> <p>Natomas Cross Canal ~.5 miles east of Hwy 99, north of Howsley Road. Canals east of Garden Highway from just north of Teal Bend south to Interstate 5</p>	<p><b>Contract 4046- Levee improvements &amp; Canal relocations Contractor- Nordic Industries</b></p> <p><b>Sacramento River East Levee Phase 2B- Reaches 5A-9B</b></p> <p><b>Elkhorn Irrigation Canal Phase 2B relocation</b></p> <p><b>GGS canal Phase 2A</b></p> <p><b>NCC south levee Phase 2B</b></p>	<p><b><u>Work in Progress</u></b> Foundation preparation and pipeline work at Teal Bend frontage. Cut-off wall, deep soil mixing, south of Elverta Road. Curing of Natomas Cross Canal cut-off wall.</p> <p><b><u>Anticipated Work Next Week</u></b> Commence levee embankment work on Natomas Cross Canal. Pipeline work at Teal Bend. Deep soil mixing cut-off wall just north of Teal Bend.</p>	<p>Minimal impacts to traffic.</p> <p>24 hours per day, 7 days per week (24/7) deep soil mixing cut-off wall work in progress for next two weeks, from north of Teal Bend to southern edge of Teal Bend.</p> <p>Dirt hauling and other construction activities during daylight hours, between 6:00 a.m. and 8:00 p.m.</p> <p>Anticipate SMUD crew activity including traffic control/flagging for overhead power relocation @ Teal Bend frontage.</p>

If you have any questions regarding the project, please visit the SAFCA website at [www.safca.org](http://www.safca.org) or contact Jay Davis at Gualco Consulting (916) 351-0600 or [jdavis@gualco.com](mailto:jdavis@gualco.com)

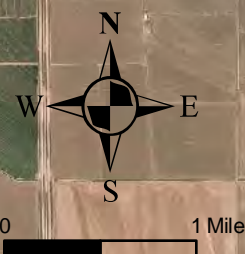
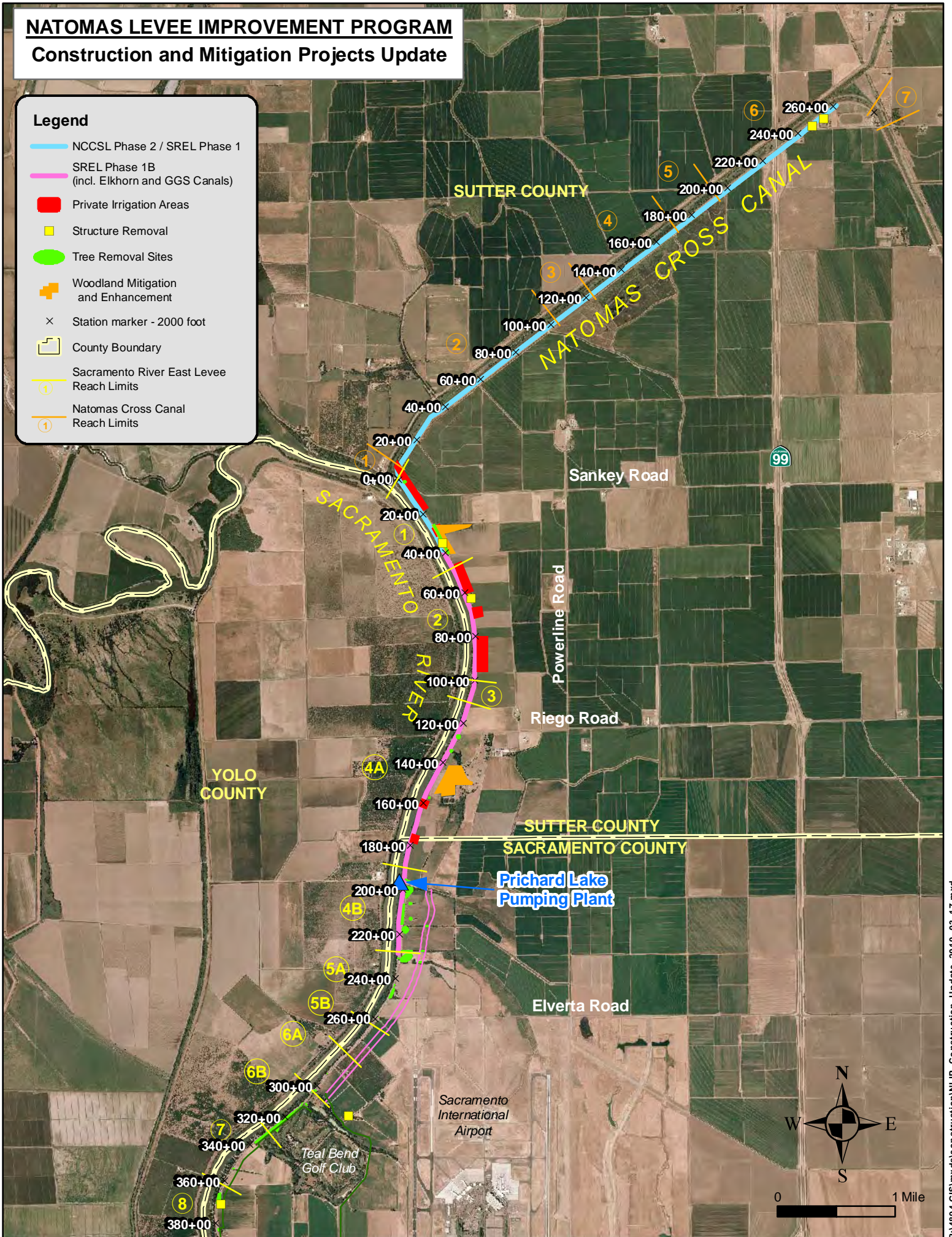
Location	Project	Construction Activity	Traffic Controls & Work Hours
Sacramento River East Levee: east of Garden Highway from Teal Bend south to Interstate 5	<p><b>Contract 4047- Canal relocation</b>  <b>Contractor- Teichert Construction</b></p> <p><b>Sacramento River East Levee Phase 2A- Reaches 5A-9B</b></p> <p><b>Elkhorn Irrigation Canal Phase 2A relocation</b></p> <p><b>Structure demolition, tree removal</b></p>	<p><b><u>Work in Progress</u></b>            Clearing, concrete canal lining and grading.</p> <p><b><u>Anticipated Work Next Week</u></b>            Clearing, concrete canal lining and grading.</p>	<p>Minimal impacts to traffic.</p> <p>Contractor working during daylight hours, between 6:00 a.m. and 8:00 p.m.</p>
Sacramento River East Levee: from Teal Bend south to ~.5 miles past Interstate 5. Novak orchard just east of Powerline Road and Garden Highway.	<p><b>Contract 4044- Tree removal, levee footprint preparation</b>  <b>Contractor- W.C. Maloney, Inc.</b></p> <p><b>Sacramento River East Levee Phase 2B- Reaches 5A-9B and Phase 3- Reaches 10-15</b></p>	<p><b><u>Work in Progress</u></b>            none</p> <p><b><u>Anticipated Work Next Week</u></b>            none</p>	<p>none</p>
Basin-wide	<p><b>Basin-wide Design Explorations (Crown Borings)</b>  <b>Contractor- Kleinfelder</b></p>	<p><b><u>Work in Progress</u></b>            Data collection from instrumentation and crown borings on Garden Highway between Elkhorn Blvd. and North Bayou Road.</p> <p><b><u>Anticipated Work Next Week</u></b>            Data collection from instrumentation and crown borings on Garden Highway between Elkhorn Blvd. and North Bayou Road</p>	<p>Traffic control measures (flaggers) will be in place to support borings, brief delays. Contractor working during daylight hours.</p>
Sacramento River East Levee: from ~.9 miles south of Natomas Cross Canal to ~.7 miles north of Riego Road.	<p><b>Contract 4055- Woodland Corridor Mitigation and Enhancement Project</b>  <b>Contractor- River Partners</b></p>	<p><b><u>Work in Progress</u></b>            Maintenance and monitoring of mitigation plantings.</p> <p><b><u>Anticipated Work Next Week</u></b>            Maintenance and monitoring of mitigation plantings.</p>	<p>No anticipated impacts to traffic. Contractor working during daylight hours.</p>

# NATOMAS LEVEE IMPROVEMENT PROGRAM

## Construction and Mitigation Projects Update

### Legend

- NCCSL Phase 2 / SREL Phase 1
- SREL Phase 1B (incl. Elkhorn and GGS Canals)
- Private Irrigation Areas
- Structure Removal
- Tree Removal Sites
- + Woodland Mitigation and Enhancement
- × Station marker - 2000 foot
- County Boundary
- ① Sacramento River East Levee Reach Limits
- ① Natomas Cross Canal Reach Limits



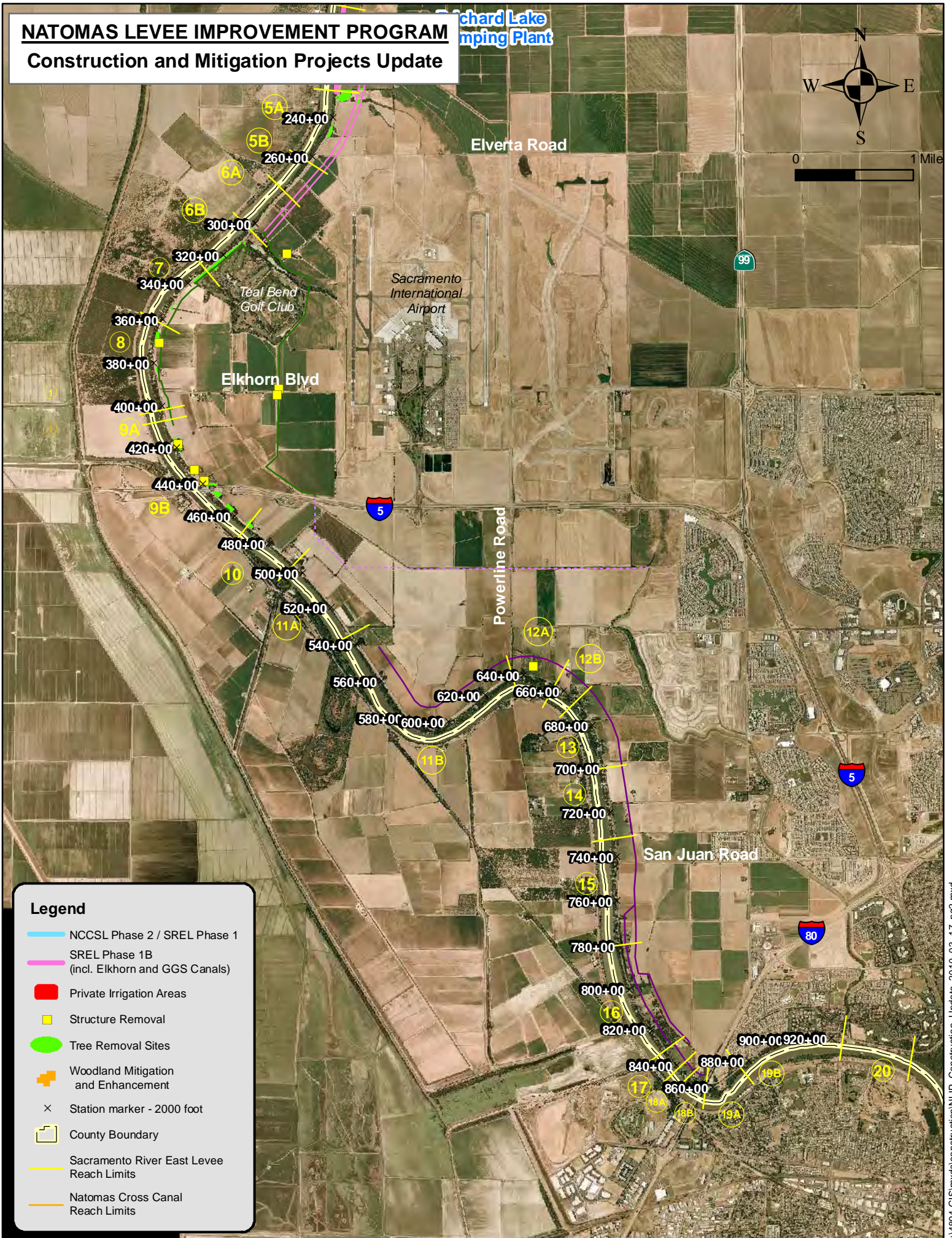
# NATOMAS LEVELLEVE IMPROVEMENT PROGRAM

## Construction and Mitigation Projects Update

Richard Lake  
Pumping Plant



0 1 Mile



**Legend**

- NCCSL Phase 2 / SREL Phase 1
- SREL Phase 1B (incl. Elkhorn and GGS Canals)
- Private Irrigation Areas
- Structure Removal
- Tree Removal Sites
- + Woodland Mitigation and Enhancement
- × Station marker - 2000 foot
- County Boundary
- Sacramento River East Levee Reach Limits
- Natomas Cross Canal Reach Limits