

**Natomas Levee Improvement Program**  
 Weekly Construction and Mitigation Projects Update  
 October 8, 2010

Location	Project	Construction Activity	Traffic Controls & Work Hours
<p>Natomas Cross Canal: from ~1.1 mile east of Hwy 99 at Howsley west to Garden Hwy.</p> <p>Sacramento River East Levee: from Natomas Cross Canal south to ~ .9 miles past Sankey Road.</p>	<p><b>Contract 3980- Levee Improvements Contractor- Teichert Construction</b></p> <p><b>Sacramento River East Levee Phase 1- Reach 1</b></p> <p><b>Natomas Cross Canal South Levee Phase 2</b></p>	<p><b><u>Work in Progress</u></b> Punchlist work.</p> <p><b><u>Anticipated Work Next Week</u></b> Punchlist work.</p>	<p>No impacts to traffic.</p> <p>Contractor working during daylight hours Monday-Saturday 6:00 a.m.- 8:00 p.m.</p>
<p>Sacramento River East Levee: from ~.9 miles south of Sankey Road south to ~.5 miles north of Elverta Road.</p> <p>Irrigation and drainage canals ~1 mile north and south of Elverta Road.</p>	<p><b>Contract 4032- Levee Improvements &amp; Canal Relocations Contractor- Independent Construction</b></p> <p><b>Sacramento River East Levee Phase 1B- Reaches 2-4B</b></p> <p><b>Upper Elkhorn Irrigation Canal</b></p> <p><b>Upper Giant Garter Snake/Drainage Canal</b></p>	<p><b><u>Work in Progress</u></b> Levee embankment south of Riego Road, cutoff wall installation north of Riego Road.</p> <p>Drainage installation @ Garden Hwy south of Riego Road.</p> <p><b><u>Anticipated Work Next Week</u></b> Levee embankment south of Riego Road, completion of cutoff wall installation north of Riego Road. Drainage installations west of Garden Hwy @ Riego Road</p>	<p>Road closure of Riego Rd at Garden Highway until mid to late November, Power Line Road to Sankey Road or Elverta Road will be available as detour routes during this time period.</p> <p>Traffic detour on Elverta Road, east of Garden Highway-interim Elverta Road location.</p> <p>Traffic control on Garden Hwy (flaggers) between Sankey and ~1 mile south of Riego, potential for brief delays.</p> <p>Contractor working during daylight hours Monday-Saturday 6:00 a.m.- 8:00 p.m.</p>

If you have any questions regarding the project, please visit the SAFCA website at [www.safca.org](http://www.safca.org) or contact Jay Davis at Gualco Consulting (916) 351-0600 or [jdavis@gualco.com](mailto:jdavis@gualco.com)

Location	Project	Construction Activity	Traffic Controls & Work Hours
<p>Sacramento River East Levee: from ~.5 miles north of Elverta Road south to ~.5 miles past Interstate 5.</p> <p>Natomas Cross Canal ~.5 miles east of Hwy 99, north of Howsley Road. Canals east of Garden Highway from just north of Teal Bend south to Interstate 5</p>	<p><b>Contract 4046- Levee improvements &amp; Canal relocations</b>  <b>Contractor- Nordic Industries</b></p> <p><b>Sacramento River East Levee Phase 2B- Reaches 5A-9B</b></p> <p><b>Elkhorn Irrigation Canal Phase 2B relocation</b></p> <p><b>GGs canal Phase 2A</b></p> <p><b>NCC south levee Phase 2B</b></p>	<p><b><u>Work in Progress</u></b>            Construction of working platform south of Teal Bend to Elkhorn Blvd.            Cut-off wall, deep soil mixing (DSM), 2 headings on Teal Bend frontage.            Completion of Levee embankment @ Natomas Cross Canal.</p> <p><b><u>Anticipated Work Next Week</u></b>            DSM cutoff wall installation @ Teal Bend frontage and north of Reservoir Rd- 2 headings.            Standard cutoff wall north of Teal Bend.            Construction of working platform south of Teal Bend to Elkhorn Blvd.            Finish grading @ Natomas Cross Canal.</p>	<p>Elverta Road -interim ramp to Garden Highway in place and opened to traffic</p> <p>24 hours per day, Monday-Saturday, deep soil mixing (DSM) cut-off wall work in progress, Teal Bend frontage and north of Reservoir Road (two headings)</p> <p>Dirt hauling and other construction activities during daylight hours Monday-Saturday 6:00 a.m.- 8:00 p.m., no work anticipated this Sunday.</p> <p>Anticipate SMUD and AT&amp;T crew activity including traffic control/flagging for overhead power relocation @ Teal Bend frontage and south of Teal Bend</p>
<p>Sacramento River East Levee: east of Garden Highway from Teal Bend south to Interstate 5</p>	<p><b>Contract 4047- Canal relocation</b>  <b>Contractor- Teichert Construction</b></p> <p><b>Sacramento River East Levee Phase 2A- Reaches 5A-9B</b></p> <p><b>Elkhorn Irrigation Canal Phase 2A relocation</b></p> <p><b>Structure demolition, tree removal</b></p>	<p><b><u>Work in Progress</u></b>            Well abandonment, misc. foundation preparation</p> <p><b><u>Anticipated Work Next Week</u></b>            Well abandonment, misc. clearing and foundation preparation</p>	<p>Minimal impacts to traffic.</p> <p>Contractor working during daylight hours Monday-Friday</p>
<p>Sacramento River East Levee: from Teal Bend south to ~.5 miles past Interstate 5. Novak orchard just east of Powerline Road and Garden Highway.</p>	<p><b>Contract 4044- Tree removal, levee footprint preparation</b>  <b>Contractor- W.C. Maloney, Inc.</b></p> <p><b>Sacramento River East Levee Phase 2B- Reaches 5A-9B and Phase 3- Reaches 10-15</b></p>	<p><b><u>Work in Progress</u></b>            none</p> <p><b><u>Anticipated Work Next Week</u></b>            none</p>	<p>none</p>

If you have any questions regarding the project, please visit the SAFCA website at [www.safca.org](http://www.safca.org) or contact Jay Davis at Gualco Consulting (916) 351-0600 or [jdavis@gualco.com](mailto:jdavis@gualco.com)

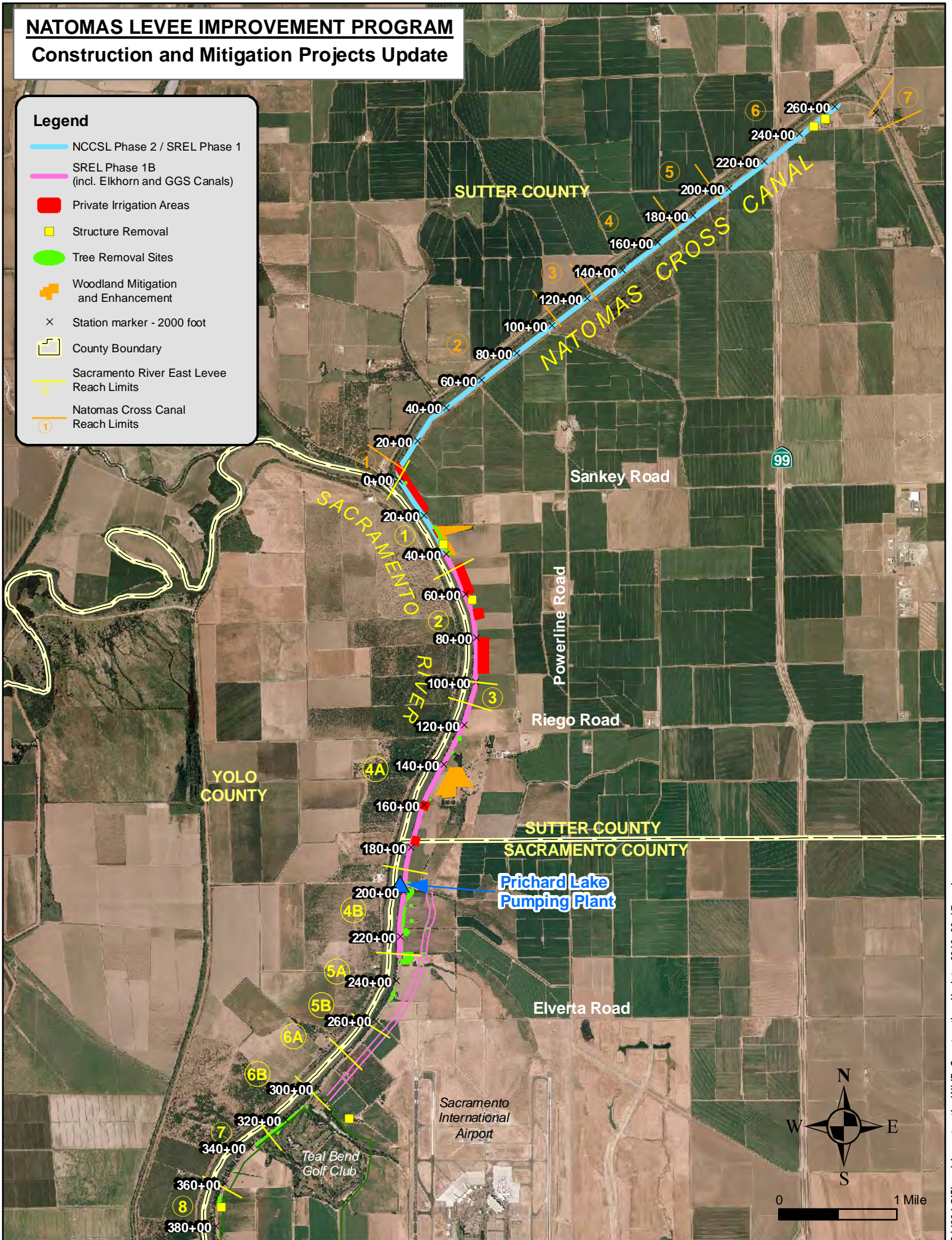
Location	Project	Construction Activity	Traffic Controls & Work Hours
Basin-wide	<b>Basin-wide Design Explorations (Crown Borings) and instrumentation readings</b> <b>Contractor- Kleinfelder</b>	<u><b>Work in Progress</b></u> Data collection from instrumentation and crown borings on Garden Highway between Riego Road and Elverta Road.  <u><b>Anticipated Work Next Week</b></u> Data collection from instrumentation and crown borings on Garden Highway between Riego Road and Elverta Road.	Traffic control measures (flaggers) will be in place to support borings/readings, brief delays. Contractor working during daylight hours Monday-Friday.
Sacramento River East Levee: from ~.9 miles south of Natomas Cross Canal to ~.7 miles north of Riego Road.	<b>Contract 4055- Woodland Corridor Mitigation and Enhancement Project</b> <b>Contractor- River Partners</b>	<u><b>Work in Progress</b></u> Maintenance and monitoring of mitigation plantings.  <u><b>Anticipated Work Next Week</b></u> Maintenance and monitoring of mitigation plantings.	No anticipated impacts to traffic. Contractor working during daylight hours Monday-Friday.

# NATOMAS LEVEE IMPROVEMENT PROGRAM

## Construction and Mitigation Projects Update

### Legend

- NCCSL Phase 2 / SREL Phase 1
- SREL Phase 1B (incl. Elkhorn and GGS Canals)
- Private Irrigation Areas
- Structure Removal
- Tree Removal Sites
- + Woodland Mitigation and Enhancement
- × Station marker - 2000 foot
- County Boundary
- ① Sacramento River East Levee Reach Limits
- ① Natomas Cross Canal Reach Limits



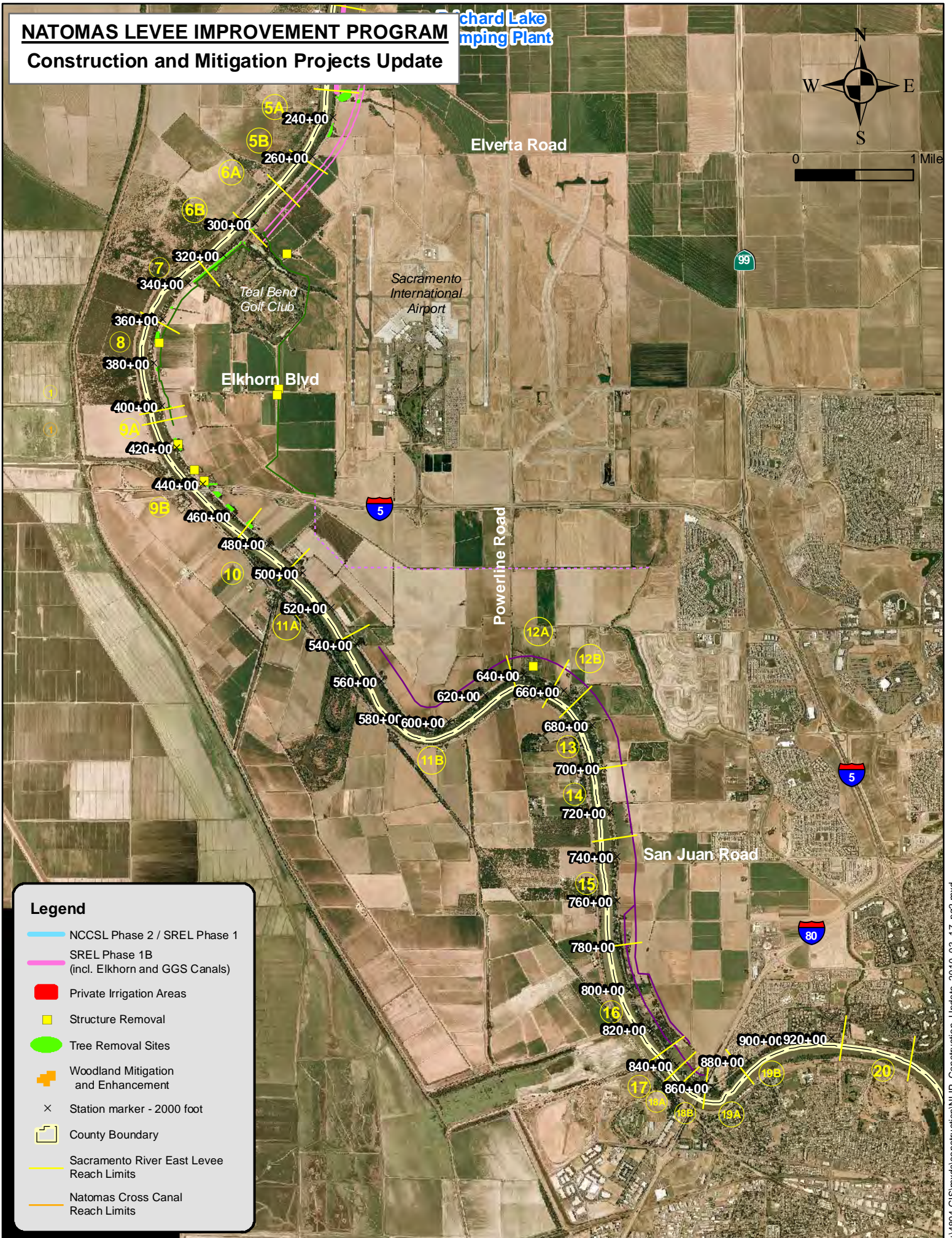
# NATOMAS LEVELLEVE IMPROVEMENT PROGRAM

## Construction and Mitigation Projects Update

Richard Lake  
Pumping Plant



0 1 Mile



**Legend**

- NCCSL Phase 2 / SREL Phase 1
- SREL Phase 1B (incl. Elkhorn and GGS Canals)
- Private Irrigation Areas
- Structure Removal
- Tree Removal Sites
- + Woodland Mitigation and Enhancement
- × Station marker - 2000 foot
- County Boundary
- Sacramento River East Levee Reach Limits
- Natomas Cross Canal Reach Limits