

Natomas Levee Improvement Program
 Weekly Construction and Mitigation Projects Update
 November 5, 2010

Location	Project	Construction Activity	Traffic Controls & Work Hours
<p>Natomas Cross Canal: from ~1.1 mile east of Hwy 99 at Howsley west to Garden Hwy.</p> <p>Sacramento River East Levee: from Natomas Cross Canal south to ~ .9 miles past Sankey Road.</p>	<p>Contract 3980- Levee Improvements Contractor- Teichert Construction</p> <p>Sacramento River East Levee Phase 1- Reach 1</p> <p>Natomas Cross Canal South Levee Phase 2</p>	<p><u>Work in Progress</u> Punchlist work.</p> <p><u>Anticipated Work Next Week</u> Punchlist work.</p>	<p>No impacts to traffic.</p> <p>Contractor working during daylight hours Monday-Saturday 6:00 a.m.- 8:00 p.m.,</p>
<p>Sacramento River East Levee: from ~.9 miles south of Sankey Road south to ~.5 miles north of Elverta Road.</p> <p>Irrigation and drainage canals ~1 mile north and south of Elverta Road.</p>	<p>Contract 4032- Levee Improvements & Canal Relocations Contractor- Independent Construction</p> <p>Sacramento River East Levee Phase 1B- Reaches 2-4B</p> <p>Upper Elkhorn Irrigation Canal</p> <p>Upper Giant Garter Snake/Drainage Canal</p>	<p><u>Work in Progress</u> Levee embankment at Riego Road and south of Riego Road. Drainage outfall west of Garden Highway at Riego</p> <p><u>Anticipated Work Next Week</u> Levee embankment at Reigo Road and south of Riego Road. Drainage installations west of Garden Hwy @ Riego Road</p>	<p>Road closure of Riego Rd at Garden Highway until mid to late November, Power Line Road to Sankey Road or Elverta Road will be available as detour routes during this time period.</p> <p>Traffic control on Garden Hwy/Riego Road (flaggers) potential for brief delays.</p> <p>Contractor working during daylight hours Monday-Saturday 6:00 a.m.- 8:00 p.m.</p>

If you have any questions regarding the project, please visit the SAFCA website at www.safca.org or contact Jay Davis at Gualco Consulting (916) 351-0600 or jdavis@gualco.com

Location	Project	Construction Activity	Traffic Controls & Work Hours
<p>Sacramento River East Levee: from ~.5 miles north of Elverta Road south to ~.5 miles past Interstate 5.</p> <p>Natomas Cross Canal ~.5 miles east of Hwy 99, north of Howsley Road. Canals east of Garden Highway from just north of Teal Bend south to Interstate 5</p>	<p>Contract 4046- Levee improvements & Canal relocations Contractor- Nordic Industries</p> <p>Sacramento River East Levee Phase 2B- Reaches 5A-9B</p> <p>Elkhorn Irrigation Canal Phase 2B relocation</p> <p>GGs canal Phase 2A</p> <p>NCC south levee Phase 2B</p>	<p><u>Work in Progress</u> Construction of working platform and interim fill south of Teal Bend to Elkhorn Blvd. Cut-off wall, deep soil mixing (DSM), 1 heading on Teal Bend frontage. Finish grading @ NCC and Brookfield Borrow grading</p> <p><u>Anticipated Work Next Week</u> Construction of working platform and interim fill south of Teal Bend to Elkhorn Blvd. Completion of deep soil mixing (DSM), 1 heading on Teal Bend frontage. Finish grading and patrol road @ NCC, finish grading of Brookfield Borrow site</p>	<p>Elverta Road -interim ramp to Garden Highway in place and opened to traffic</p> <p>24 hours per day, Monday-Saturday, deep soil mixing (DSM) cut-off wall work in progress, Teal Bend frontage (1 heading)</p> <p>Dirt hauling and other construction activities during daylight hours Monday-Saturday 6:00 a.m.- 8:00 p.m., no levee work anticipated this Sunday.</p> <p>Anticipate SMUD activity between Elkhorn Blvd and N. Bayou and AT&T crew activity from Teal Bend frontage to Elkhorn. Potential traffic control/flagging. Monday-Sunday during daylight hours.</p>
<p>Sacramento River East Levee: east of Garden Highway from Teal Bend south to Interstate 5</p>	<p>Contract 4047- Canal relocation Contractor- Teichert Construction</p> <p>Sacramento River East Levee Phase 2A- Reaches 5A-9B</p> <p>Elkhorn Irrigation Canal Phase 2A relocation</p> <p>Structure demolition, tree removal</p>	<p><u>Work in Progress</u> Well abandonment, misc. grading and clean-up</p> <p><u>Anticipated Work Next Week</u> Well abandonment, misc. grading and clean-up</p>	<p>Minimal impacts to traffic.</p> <p>Contractor working during daylight hours Monday-Friday</p>
<p>Sacramento River East Levee: from Teal Bend south to ~.5 miles past Interstate 5. Novak orchard just east of Powerline Road and Garden Highway.</p>	<p>Contract 4044- Tree removal, levee footprint preparation Contractor- W.C. Maloney, Inc.</p> <p>Sacramento River East Levee Phase 2B- Reaches 5A-9B and Phase 3- Reaches 10-15</p>	<p><u>Work in Progress</u> none</p> <p><u>Anticipated Work Next Week</u> none</p>	<p>none</p>

If you have any questions regarding the project, please visit the SAFCA website at www.safca.org or contact Jay Davis at Gualco Consulting (916) 351-0600 or jdavis@gualco.com

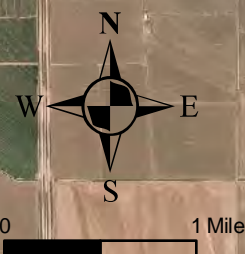
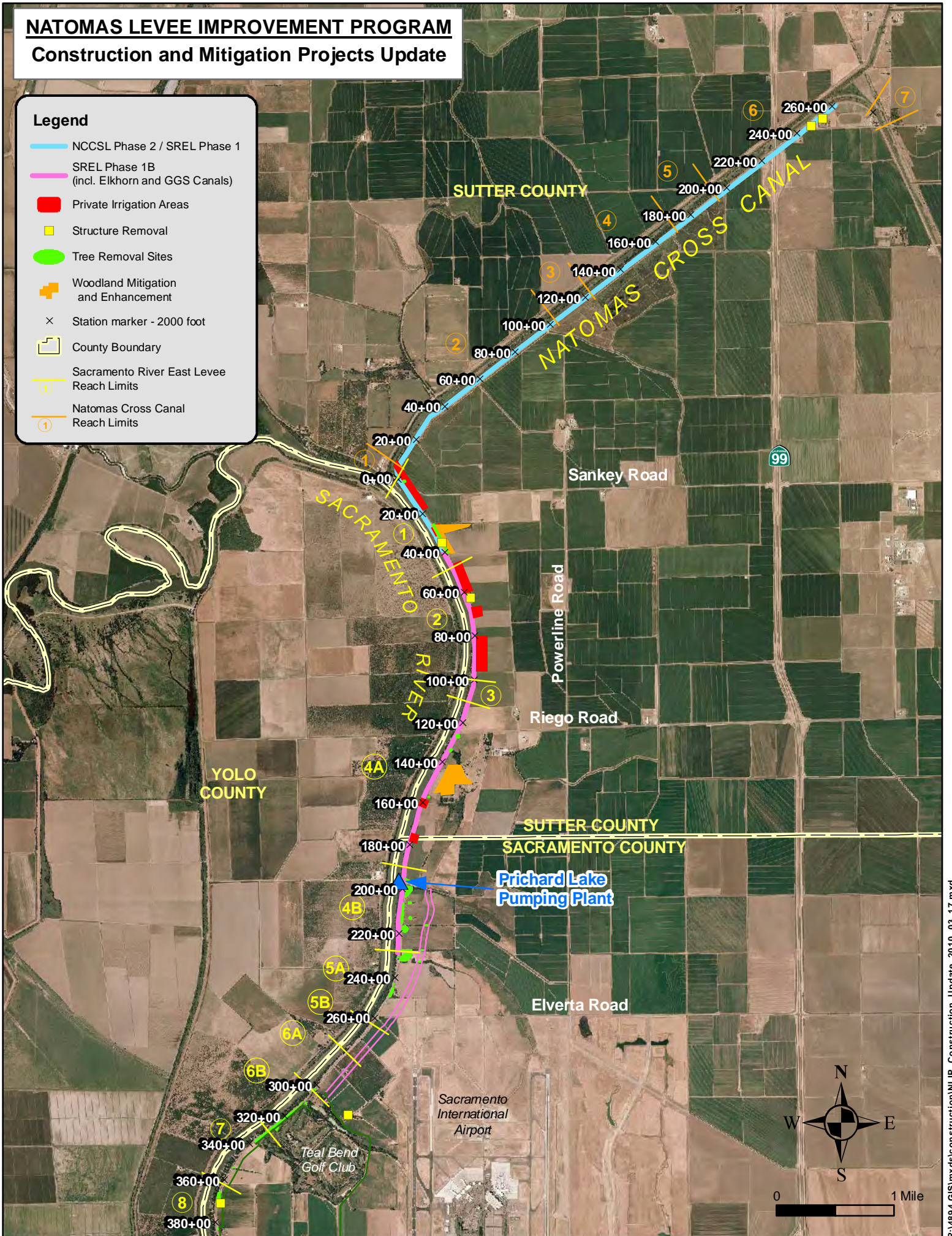
Location	Project	Construction Activity	Traffic Controls & Work Hours
Basin-wide	Basin-wide Design Explorations (Crown Borings) and instrumentation readings Contractor- Kleinfelder	<p><u>Work in Progress</u> Data collection from instrumentation and crown borings on Garden Highway between Sankey Road and North Bayou Road.</p> <p><u>Anticipated Work Next Week</u> Data collection from instrumentation and crown borings on Garden Highway between Sankey Road and North Bayou Road.</p>	Traffic control measures (flaggers) will be in place to support borings/readings, brief delays. Contractor working during daylight hours Monday-Friday.
Sacramento River East Levee: from ~.9 miles south of Natomas Cross Canal to ~.7 miles north of Riego Road.	Contract 4055- Woodland Corridor Mitigation and Enhancement Project Contractor- River Partners	<p><u>Work in Progress</u> Maintenance and monitoring of mitigation plantings.</p> <p><u>Anticipated Work Next Week</u> Maintenance and monitoring of mitigation plantings.</p>	No anticipated impacts to traffic. Contractor working during daylight hours Monday-Friday.

NATOMAS LEVEE IMPROVEMENT PROGRAM

Construction and Mitigation Projects Update

Legend

- NCCSL Phase 2 / SREL Phase 1
- SREL Phase 1B (incl. Elkhorn and GGS Canals)
- Private Irrigation Areas
- Structure Removal
- Tree Removal Sites
- + Woodland Mitigation and Enhancement
- × Station marker - 2000 foot
- County Boundary
- ① Sacramento River East Levee Reach Limits
- ① Natomas Cross Canal Reach Limits



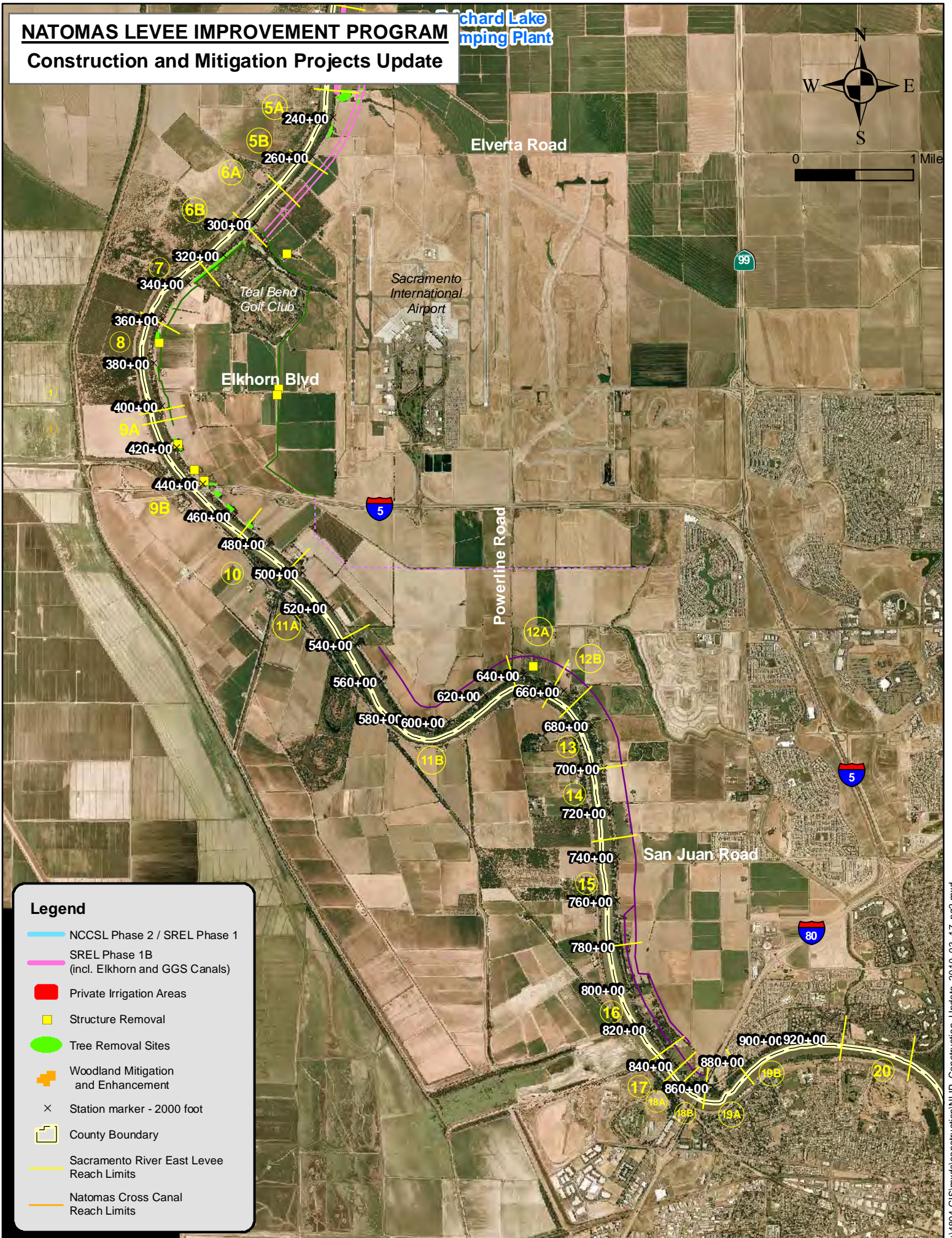
NATOMAS LEVELLEVE IMPROVEMENT PROGRAM

Construction and Mitigation Projects Update

Richard Lake
Pumping Plant



0 1 Mile



Legend

- NCCSL Phase 2 / SREL Phase 1
- SREL Phase 1B
(incl. Elkhorn and GGS Canals)
- Private Irrigation Areas
- Structure Removal
- Tree Removal Sites
- + Woodland Mitigation
and Enhancement
- × Station marker - 2000 foot
- County Boundary
- Sacramento River East Levee
Reach Limits
- Natomas Cross Canal
Reach Limits