

If you have any questions regarding the project, please visit the SAFCA website at www.safca.org or contact Jay Davis at Gualco Consulting (916) 351-0600 or jdavis@gualco.com

Natomas Levee Improvement Program

Weekly Construction and Mitigation Projects Update

May 29, 2009

(SREL= Sacramento River East Levee NCC-SL= Natomas Cross Canal South Levee)

Project	Contractor	Work In Progress	Anticipated Work Next Week	Traffic Controls & Work Hours
NCC-SL Phase 2/SREL Phase 1, Reach 1 (from ~ 1.1 mile east of Hwy 99 @ Howsley Rd. to Garden Hwy/Sankey Rd and on Garden Hwy from Sankey Rd. to ~.9 mile south of Sankey Rd)	Teichert Construction	installation of erosion control measures	Mobilization of equipment, equipment to be placed @ Howsley Rd/99. Set up of Construction field offices @ Rio Ramaza/Riego Rd	impacts to traffic will be minimal, work hours are 7:00 am to 5:00 pm
SREL Reaches 1-4A Structure and Tree Removal (Garden Hwy from ~300' north of Howsley Road to ~1.3 miles south of Riego Road)	GW Demolition, Inc.	installation of private access road on Cummings' property	private access road completion	no anticipated impacts to traffic, contractor working 7:00 am to 5:00 pm-potential truck crossing on Garden Highway ~.5 south of Sankey Rd.
SREL Reaches 1-4A Private Irrigation Facility Relocation Project (Garden Hwy from ~300' north of Howsley Road to ~1.3 miles south of Riego Road)	McGuire and Hester	well installation	well installation, minor grading	no anticipated impacts to traffic, contractor working 7:00 am to 5:00 pm
SREL Phase 1B Reach 2-4B (Garden Highway from ~.9 miles south of Sankey Rd. to ~.5 miles north of Elverta Rd)	out to bid, bid date 6/25/09	none	none	pending
Phase 2 Woodland Mitigation & Enhancement Project (~.25 miles south of Rio Ramaza/Garden Hwy)	River Partners	irrigation installation @ Rio Ramaza site	installation of irrigation and well construction	no anticipated impacts to traffic, contractor working 8:00 am to 5:00 pm
SREL Design Explorations (Garden Highway- between W. Elverta Rd and N. Bayou; between Power Line Rd and San Juan Rd; between Radio Rd and San Juan Rd)	Kleinfelder/HDR	core boring for design exploration on Garden Hwy just north of N. Bayou Rd on 5/29	core borings for design exploration on and adjacent to Garden Hwy	traffic control and flagging of traffic anticipated, brief delays, anticipated work hours 8:00 am to 4:00 pm

NATOMAS LEVEE IMPROVEMENT PROGRAM

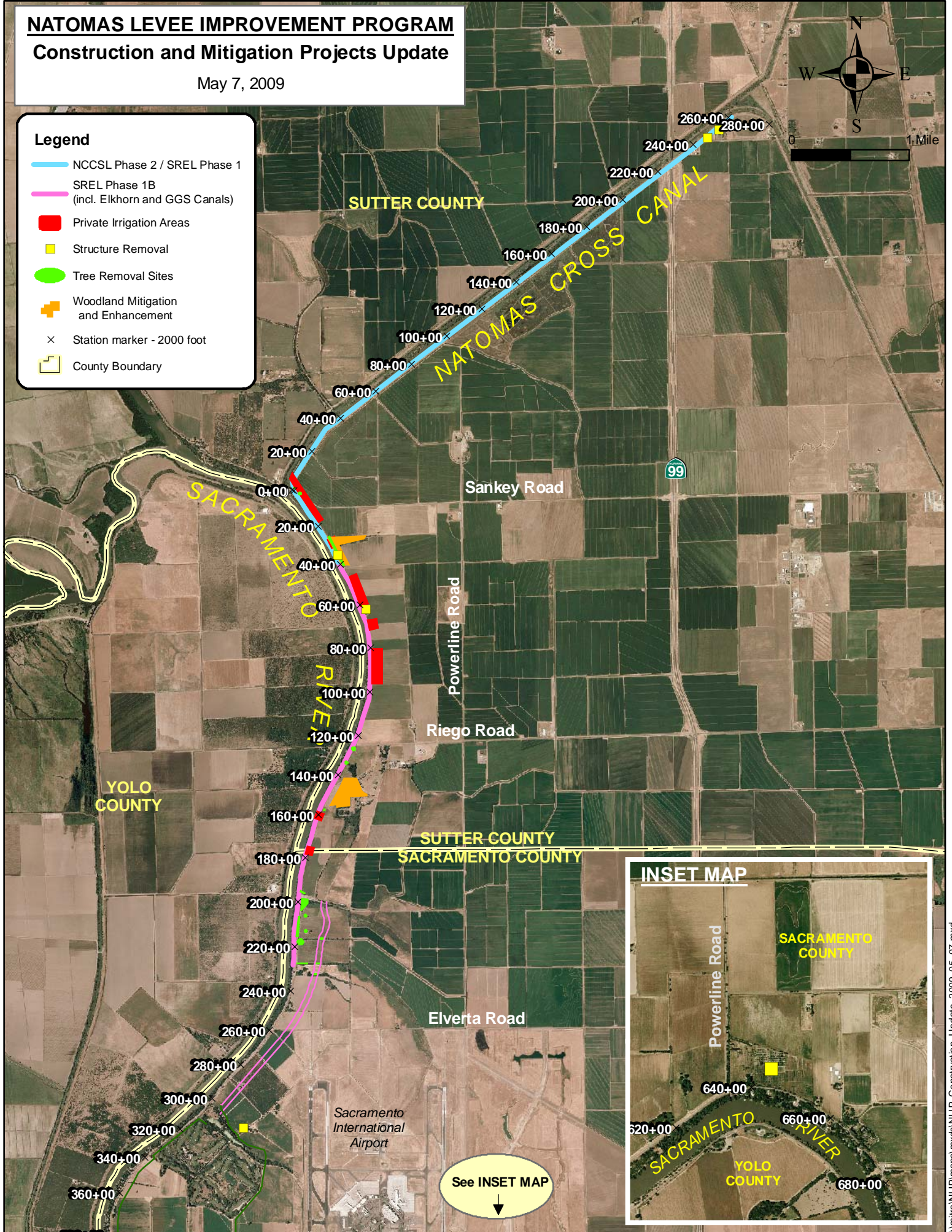
Construction and Mitigation Projects Update

May 7, 2009



Legend

- NCCSL Phase 2 / SREL Phase 1
- SREL Phase 1B (incl. Elkhorn and GGS Canals)
- Private Irrigation Areas
- Structure Removal
- Tree Removal Sites
- + Woodland Mitigation and Enhancement
- × Station marker - 2000 foot
- County Boundary



See INSET MAP
↓