

If you have any questions regarding the project, please visit the SAFCA website at [www.safca.org](http://www.safca.org) or contact Jay Davis at Gualco Consulting (916) 351-0600 or [jdavis@gualco.com](mailto:jdavis@gualco.com)

## Natomas Levee Improvement Program

### Weekly Construction and Mitigation Projects Update

May 14, 2009

(SREL= Sacramento River East Levee NCCSL= Natomas Cross Canal South Levee)

Project	Contractor	Work In Progress	Anticipated Work Next Week	Traffic Controls & Work Hours
<b>SREL Reaches 1-4A Structure and Tree Removal</b> (Garden Hwy from ~300' north of Howsley Road to ~1.3 miles south of Riego Road)	<b>GW Demolition, Inc.</b>	tree clearing temporarily suspended	tree clearing to continue, portions of work limited due to nesting raptors, grading work for Cummings access road	no anticipated impacts to traffic, contractor working 7:00 am to 5:00 pm-potential truck crossing on Garden Highway ~.5 south of Sankey Rd.
<b>SREL Reaches 1-4A Private Irrigation Facility Relocation Project</b> (Garden Hwy from ~300' north of Howsley Road to ~1.3 miles south of Riego Road)	<b>McGuire and Hester</b>	irrigation ditch completed and in use	grading and construction of private access road	no anticipated impacts to traffic, contractor working 7:00 am to 5:00 pm
<b>Phase 2 Woodland Mitigation &amp; Enhancement Project</b> (~.25 miles south of Rio Ramaza/Garden Hwy)	<b>River Partners</b>	installation of BMPs and irrigation layout	installation of irrigation system for mitigation planting	no anticipated impacts to traffic, contractor working 8:00 am to 5:00 pm
<b>NCCSL Phase 2/SREL Phase 1, Reach 1</b> (from ~ 1.1 mile east of Hwy 99 @ Howsley Rd. to Garden Hwy/Sankey Rd and on Garden Hwy from Sankey Rd. to ~.9 mile south of Sankey Rd)	<b>Teichert Construction</b>	submittals, mix design, pre-construction photographs	mobilization, surveying	portions of this work to include double shifts, impacts to traffic will be minimal-additional information to be provided
<b>SREL Phase 1B Reach 2-4B</b> (Garden Highway from ~.9 miles south of Sankey Rd. to ~.5 miles north of Elverta Rd)	<b>project out to bid</b>	none	none	pending

# NATOMAS LEVEE IMPROVEMENT PROGRAM

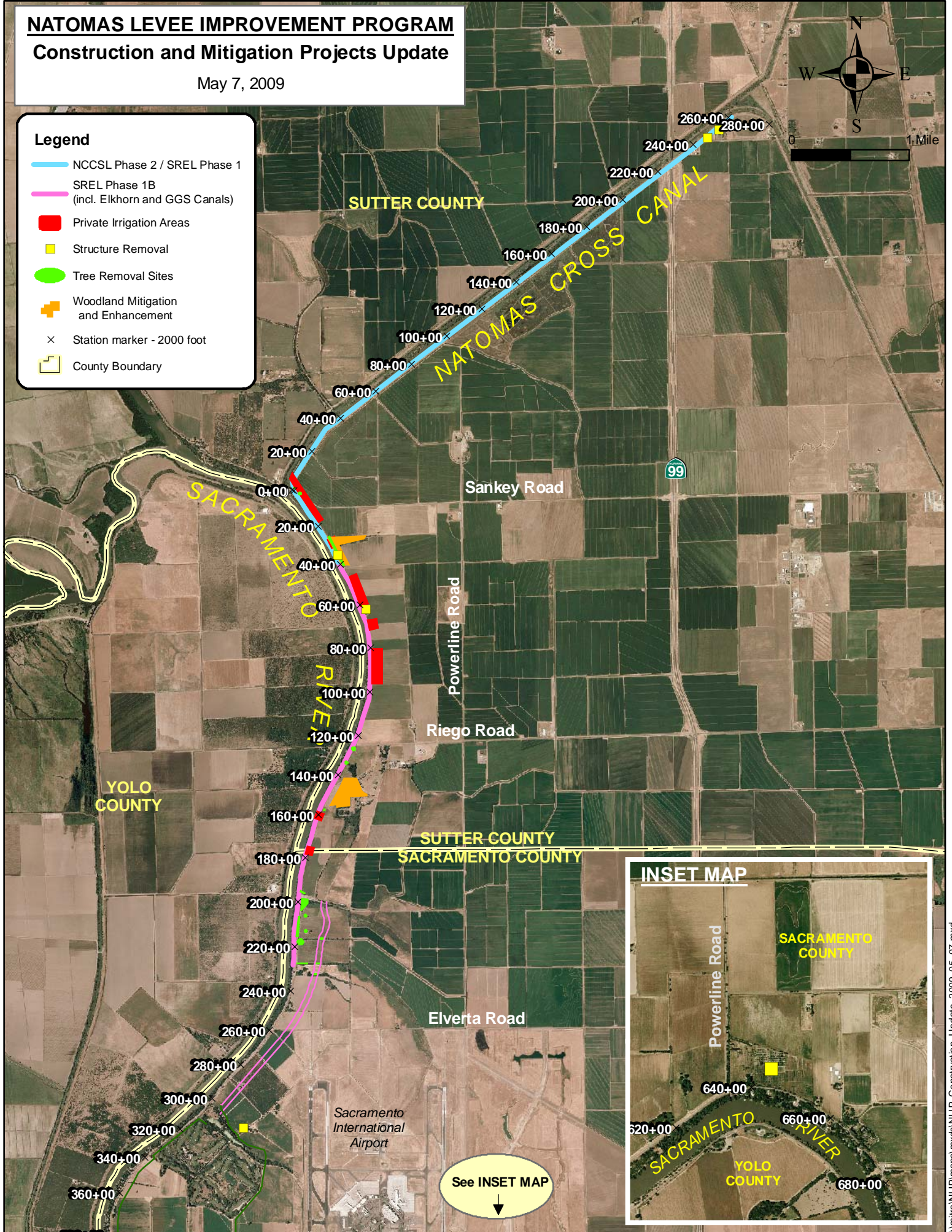
## Construction and Mitigation Projects Update

May 7, 2009



### Legend

- NCCSL Phase 2 / SREL Phase 1
- SREL Phase 1B (incl. Elkhorn and GGS Canals)
- Private Irrigation Areas
- Structure Removal
- Tree Removal Sites
- + Woodland Mitigation and Enhancement
- × Station marker - 2000 foot
- County Boundary



See INSET MAP  
↓