

If you have any questions regarding the project, please visit the SAFCA website at www.safca.org or contact Jay Davis at Gualco Consulting (916) 351-0600 or jdavis@gualco.com

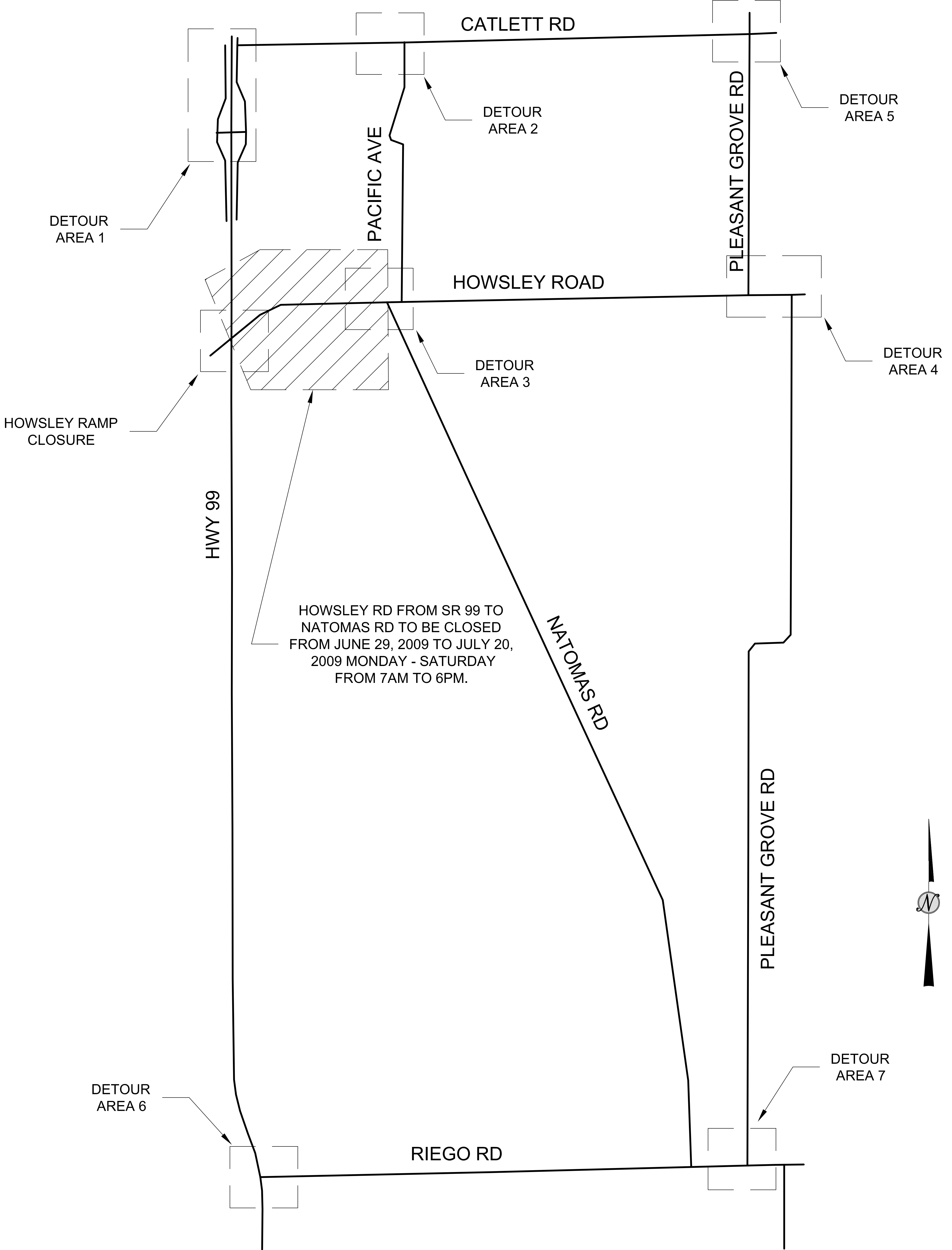
Natomas Levee Improvement Program

Weekly Construction and Mitigation Projects Update

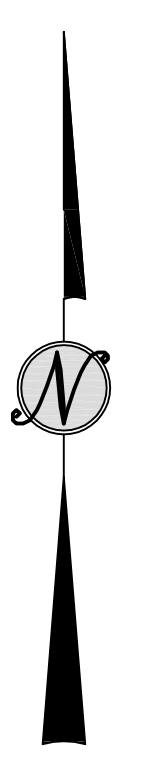
June 19, 2009

(SREL= Sacramento River East Levee NCCSL= Natomas Cross Canal South Levee)

Project	Contractor	Work In Progress	Anticipated Work Next Week	Traffic Controls & Work Hours
NCCSL Phase 2/SREL Phase 1, Reach 1 (from ~ 1.1 mile east of Hwy 99 @ Howsley Rd. to Garden Hwy/Sankey Rd and on Garden Hwy from Sankey Rd. to ~.9 mile south of Sankey Rd)	Teichert Construction	NCC slurry wall construction west of Hwy 70, degrade east of Hwy 70	NCC slurry wall construction west of Hwy 70, commence wall east of Hwy 70	Slurry wall construction will be 24hr/day Monday-Saturday. Howsley Rd/Hwy 70 ramps to be closed daily starting 6/29/09, please see detour map on website
SREL Reaches 1-4A Structure and Tree Removal (Garden Hwy from ~300' north of Howsley Road to ~1.3 miles south of Riego Road)	GW Demolition, Inc.	brush and trash removal @ Rio Ramaza	brush and trash removal @ Rio Ramaza	no anticipated impacts to traffic, contractor working 7:00 am to 5:00 pm-potential truck crossing on Garden Highway ~.5 south of Sankey Rd.
SREL Reaches 1-4A Private Irrigation Facility Relocation Project (Garden Hwy from ~300' north of Howsley Road to ~1.3 miles south of Riego Road)	McGuire and Hester	none	completion of final irrigation well installation	no anticipated impacts to traffic, contractor working 7:00 am to 5:00 pm
Phase 2 Woodland Mitigation & Enhancement Project (~.25 miles south of Rio Ramaza/Garden Hwy)	River Partners	irrigation and mitigation planting	mitigation planting	no anticipated impacts to traffic, contractor working 8:00 am to 5:00 pm
SREL Phase 1B Reach 2-4B (Garden Highway from ~.9 miles south of Sankey Rd. to ~.5 miles north of Elverta Rd)	out to bid, bid date 6/25/09	none	none	pending
SREL Design Explorations (levee crown borings) (Garden Highway- between W. Elverta Rd and N. Bayou; between Power Line Rd and San Juan Rd; between Radio Rd and San Juan Rd)	Kleinfelder/HDR	none	no exploration work on levee crown impacting traffic currently planned for next week	no traffic control scheduled



HOWSLEY RD FROM SR 99 TO NATOMAS RD TO BE CLOSED FROM JUNE 29, 2009 TO JULY 20, 2009 MONDAY - SATURDAY FROM 7AM TO 6PM.



DATE:
JUNE 10, 2009

DRAWN BY:
TYLER TANI

DESIGNED BY:
GORDON STOUT

CHECKED BY:
GORDON STOUT

SCALE

HORZ.
N/A

VERT.
N/A



TEICHERT CONSTRUCTION
WOODLAND DISTRICT
24207 COUNTY ROAD 100A
DAVIS, CA 95616
PHONE: 530-406-4200 FAX: 530-406-4299

HOWSLEY ROAD
OVERALL DETOUR MAP

SHEET	1	10
		OF

JOB NUMBER:
1300908

NATOMAS LEVEE IMPROVEMENT PROGRAM

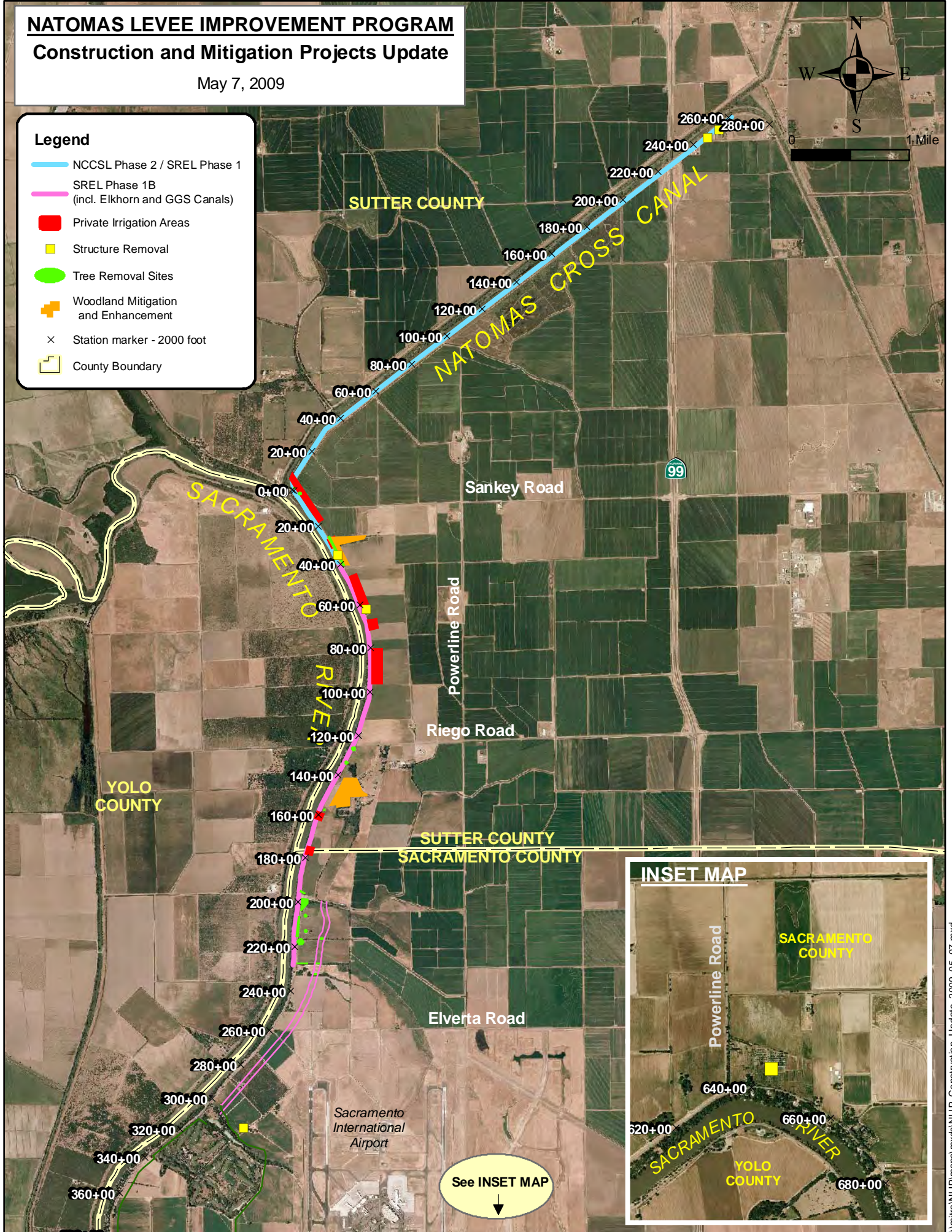
Construction and Mitigation Projects Update

May 7, 2009



Legend

- NCCSL Phase 2 / SREL Phase 1
- SREL Phase 1B (incl. Elkhorn and GGS Canals)
- Private Irrigation Areas
- Structure Removal
- Tree Removal Sites
- + Woodland Mitigation and Enhancement
- × Station marker - 2000 foot
- County Boundary



See INSET MAP
↓