

If you have any questions regarding the project, please visit the SAFCA website at www.safca.org or contact Jay Davis at Gualco Consulting (916) 351-0600 or jdavis@gualco.com

Natomas Levee Improvement Program

Weekly Construction and Mitigation Projects Update

June 11, 2009

(SREL= Sacramento River East Levee NCCSL= Natomas Cross Canal South Levee)

Project	Contractor	Work In Progress	Anticipated Work Next Week	Traffic Controls & Work Hours
NCCSL Phase 2/SREL Phase 1, Reach 1 (from ~ 1.1 mile east of Hwy 99 @ Howsley Rd. to Garden Hwy/Sankey Rd and on Garden Hwy from Sankey Rd. to ~.9 mile south of Sankey Rd)	Teichert Construction	degrade of NCCSL, mobilization of slurry wall operation	degrade of NCCSL, construction yard set up @ Rio Ramaza, commencement of 2 headings of slurry wall	impacts to traffic will be minimal, work hours are 7:00 am to 5:00 pm
SREL Reaches 1-4A Structure and Tree Removal (Garden Hwy from ~300' north of Howsley Road to ~1.3 miles south of Riego Road)	GW Demolition, Inc.	brush and trash removal @ Rio Ramaza	brush and trash removal @ Rio Ramaza	no anticipated impacts to traffic, contractor working 7:00 am to 5:00 pm-potential truck crossing on Garden Highway ~.5 south of Sankey Rd.
SREL Reaches 1-4A Private Irrigation Facility Relocation Project (Garden Hwy from ~300' north of Howsley Road to ~1.3 miles south of Riego Road)	McGuire and Hester	none	completion of final irrigation well installation	no anticipated impacts to traffic, contractor working 7:00 am to 5:00 pm
Phase 2 Woodland Mitigation & Enhancement Project (~.25 miles south of Rio Ramaza/Garden Hwy)	River Partners	irrigation and mitigation planting	mitigation planting	no anticipated impacts to traffic, contractor working 8:00 am to 5:00 pm
SREL Phase 1B Reach 2-4B (Garden Highway from ~.9 miles south of Sankey Rd. to ~.5 miles north of Elverta Rd)	out to bid, bid date 6/25/09	none	none	pending
SREL Design Explorations (levee crown borings) (Garden Highway- between W. Elverta Rd and N. Bayou; between Power Line Rd and San Juan Rd; between Radio Rd and San Juan Rd)	Kleinfelder/HDR	none	no exploration work on levee crown impacting traffic currently planned for next week	no traffic control scheduled

NATOMAS LEVEE IMPROVEMENT PROGRAM

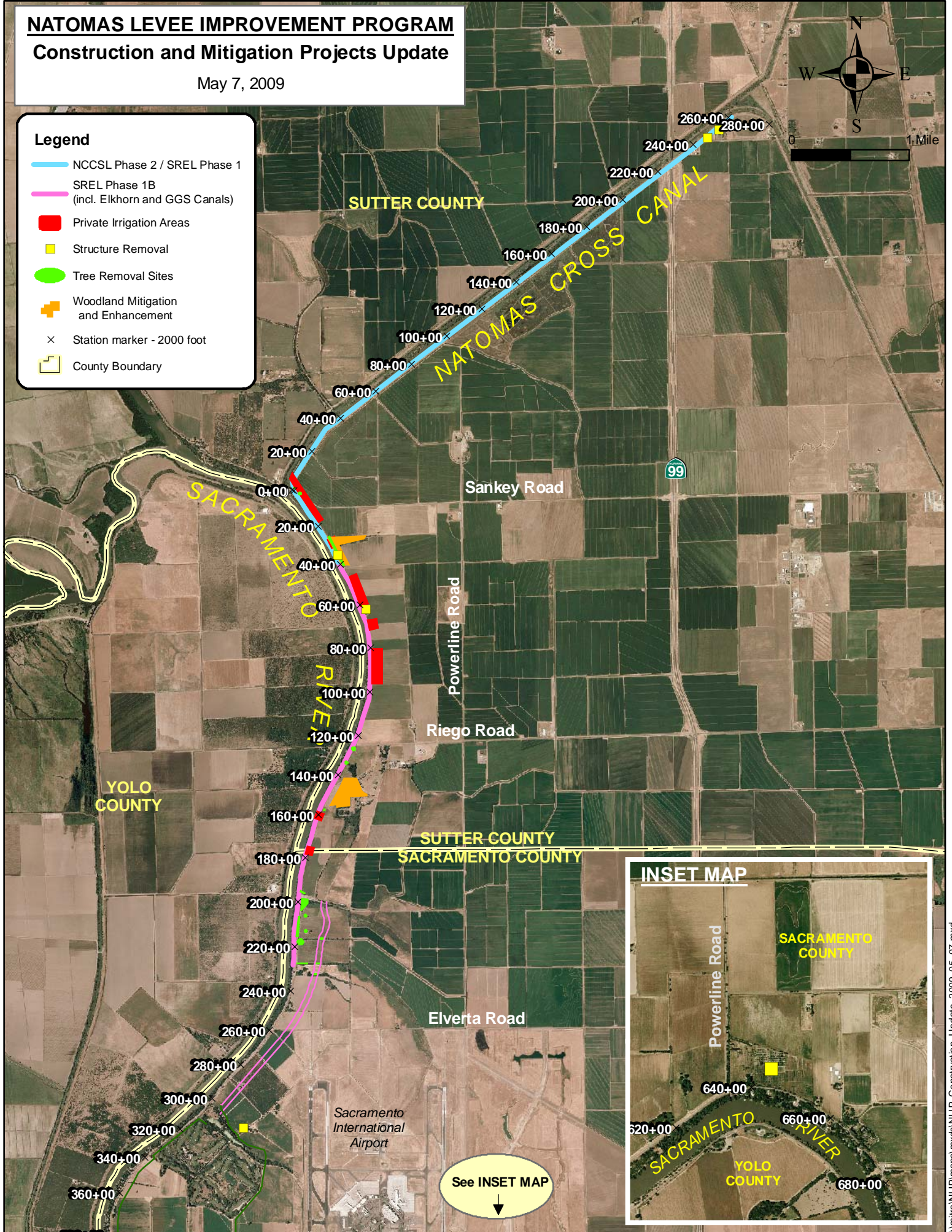
Construction and Mitigation Projects Update

May 7, 2009



Legend

- NCCSL Phase 2 / SREL Phase 1
- SREL Phase 1B (incl. Elkhorn and GGS Canals)
- Private Irrigation Areas
- Structure Removal
- Tree Removal Sites
- + Woodland Mitigation and Enhancement
- × Station marker - 2000 foot
- County Boundary



See INSET MAP
↓