

If you have any questions regarding the project, please visit the SAFCA website at www.safca.org or contact Jay Davis at Gualco Consulting (916) 351-0600 or jdavis@gualco.com

Natomas Levee Improvement Program

Weekly Construction and Mitigation Projects Update

June 4, 2009

(SREL= Sacramento River East Levee NCCSL= Natomas Cross Canal South Levee)

Project	Contractor	Work In Progress	Anticipated Work Next Week	Traffic Controls & Work Hours
NCCSL Phase 2/SREL Phase 1, Reach 1 (from ~ 1.1 mile east of Hwy 99 @ Howsley Rd. to Garden Hwy/Sankey Rd and on Garden Hwy from Sankey Rd. to ~.9 mile south of Sankey Rd)	Teichert Construction	commencement of NCCSL degrade	degrade of NCCSL, construction yard set up @ Rio Ramaza, mobilization of slurry wall equipment	impacts to traffic will be minimal, work hours are 7:00 am to 5:00 pm
SREL Reaches 1-4A Structure and Tree Removal (Garden Hwy from ~300' north of Howsley Road to ~1.3 miles south of Riego Road)	GW Demolition, Inc.	brush and trash removal @ Rio Ramaza	brush and trash removal @ Rio Ramaza	no anticipated impacts to traffic, contractor working 7:00 am to 5:00 pm-potential truck crossing on Garden Highway ~.5 south of Sankey Rd.
SREL Reaches 1-4A Private Irrigation Facility Relocation Project (Garden Hwy from ~300' north of Howsley Road to ~1.3 miles south of Riego Road)	McGuire and Hester	well installation	completion of irrigation well installation	no anticipated impacts to traffic, contractor working 7:00 am to 5:00 pm
Phase 2 Woodland Mitigation & Enhancement Project (~.25 miles south of Rio Ramaza/Garden Hwy)	River Partners	irrigation installation @ Rio Ramaza site	continuation of irrigation installation, commencement of mitigation planting	no anticipated impacts to traffic, contractor working 8:00 am to 5:00 pm
SREL Phase 1B Reach 2-4B (Garden Highway from ~.9 miles south of Sankey Rd. to ~.5 miles north of Elverta Rd)	out to bid, bid date 6/25/09	none	none	pending
SREL Design Explorations (Garden Highway- between W. Elverta Rd and N. Bayou; between Power Line Rd and San Juan Rd; between Radio Rd and San Juan Rd)	Kleinfelder/HDR	core boring for design exploration on Garden Hwy	no exploration work on levee crown impacting traffic currently planned for next week	traffic control and flagging of traffic anticipated, brief delays- working 8:00 am to 5:00 pm

NATOMAS LEVEE IMPROVEMENT PROGRAM

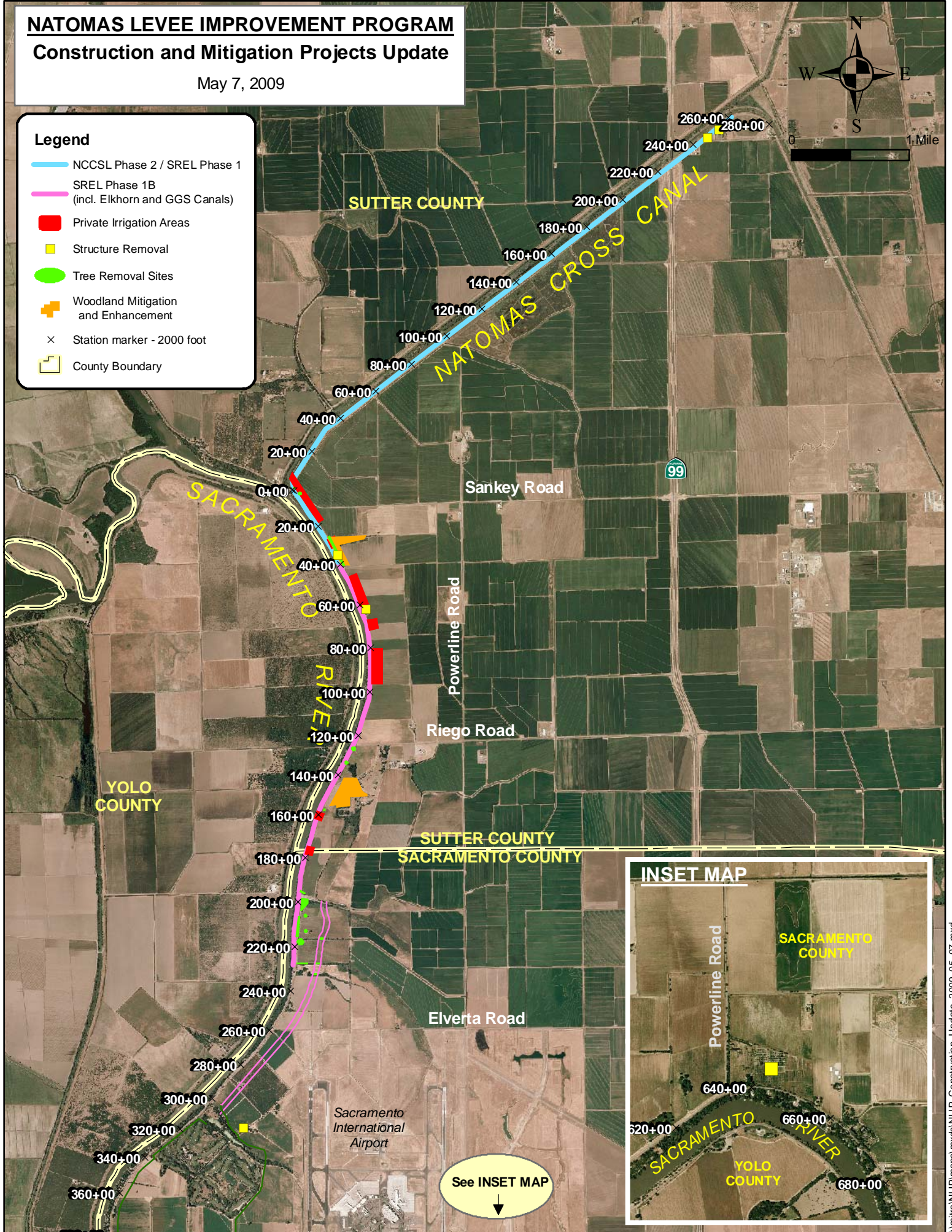
Construction and Mitigation Projects Update

May 7, 2009



Legend

- NCCSL Phase 2 / SREL Phase 1
- SREL Phase 1B (incl. Elkhorn and GGS Canals)
- Private Irrigation Areas
- Structure Removal
- Tree Removal Sites
- + Woodland Mitigation and Enhancement
- × Station marker - 2000 foot
- County Boundary



See INSET MAP
↓