

If you have any questions regarding the project, please visit the SAFCA website at [www.safca.org](http://www.safca.org) or contact Jay Davis at Gualco Consulting (916) 351-0600 or [jdavis@gualco.com](mailto:jdavis@gualco.com)

## Natomas Levee Improvement Program

### Weekly Construction and Mitigation Projects Update

July 9, 2009

(SREL= Sacramento River East Levee NCCSL= Natomas Cross Canal South Levee)

Project	Contractor	Work In Progress	Anticipated Work Next Week	Traffic Controls & Work Hours
<b>NCCSL Phase 2/SREL Phase 1, Reach 1</b> (from ~ 1.1 mile east of Hwy 99 @ Howsley Rd. to Garden Hwy/Sankey Rd and on Garden Hwy from Sankey Rd. to ~.9 mile south of Sankey Rd)	<b>Teichert Construction</b>	NCC slurry wall construction west of Hwy 70, degrade east of Hwy 70, embankment on NCC	NCC slurry wall construction west and east of Hwy 70, embankment on NCC, backfill of misc. excavations on Garden Hwy N. of Riego Rd. and possible initial pole relocation work by PG&E	Slurry wall construction west of Hwy 70 will be 24hr/day Monday-Saturday. Howsley Rd/Hwy 70 exit ramps to be closed between 7/6 and 7/29/09, please see detour map on website
<b>SREL Reaches 1-4A Structure and Tree Removal</b> (Garden Hwy from ~300' north of Sankey Road to ~1.3 miles south of Riego Road)	<b>GW Demolition, Inc.</b>	brush removal south of Riego Rd.	brush removal south of Riego Rd.	no anticipated impacts to traffic, contractor working 7:00 am to 5:00 pm-potential truck crossing on Garden Highway ~.5 south of Sankey Rd.
<b>SREL Reaches 1-4A Private Irrigation Facility Relocation Project</b> (Garden Hwy from ~300' north of Sankey Road to ~1.3 miles south of Riego Road)	<b>McGuire and Hester</b>	installation of irrigation well, aprox. 1/2 mile north of Riego Road	installation of irrigation well, aprox. 1/2 mile north of Riego Road	no anticipated impacts to traffic, no night work anticipated for next week
<b>Phase 2 Woodland Mitigation &amp; Enhancement Project</b> (~.25 miles south of Rio Ramaza/Garden Hwy)	<b>River Partners</b>	irrigation and mitigation planting	mitigation planting, spreading mulch	no anticipated impacts to traffic, contractor working 8:00 am to 5:00 pm
<b>SREL Phase 1B Reach 2-4B</b> (Garden Highway from ~.9 miles south of Sankey Rd. to ~.5 miles north of Elverta Rd)	<b>bids opened 7/2/09, bid evaluation in progress</b>	none	none	pending
<b>SREL Design Explorations (levee crown borings)</b> (Garden Highway- between W. Elverta Rd and N. Bayou; between Power Line Rd and San Juan Rd; between Radio Rd and San Juan Rd)	<b>Kleinfelder/HDR</b>	none	no exploration work on levee crown impacting traffic currently planned for next week	no traffic control scheduled

# NATOMAS LEVEE IMPROVEMENT PROGRAM

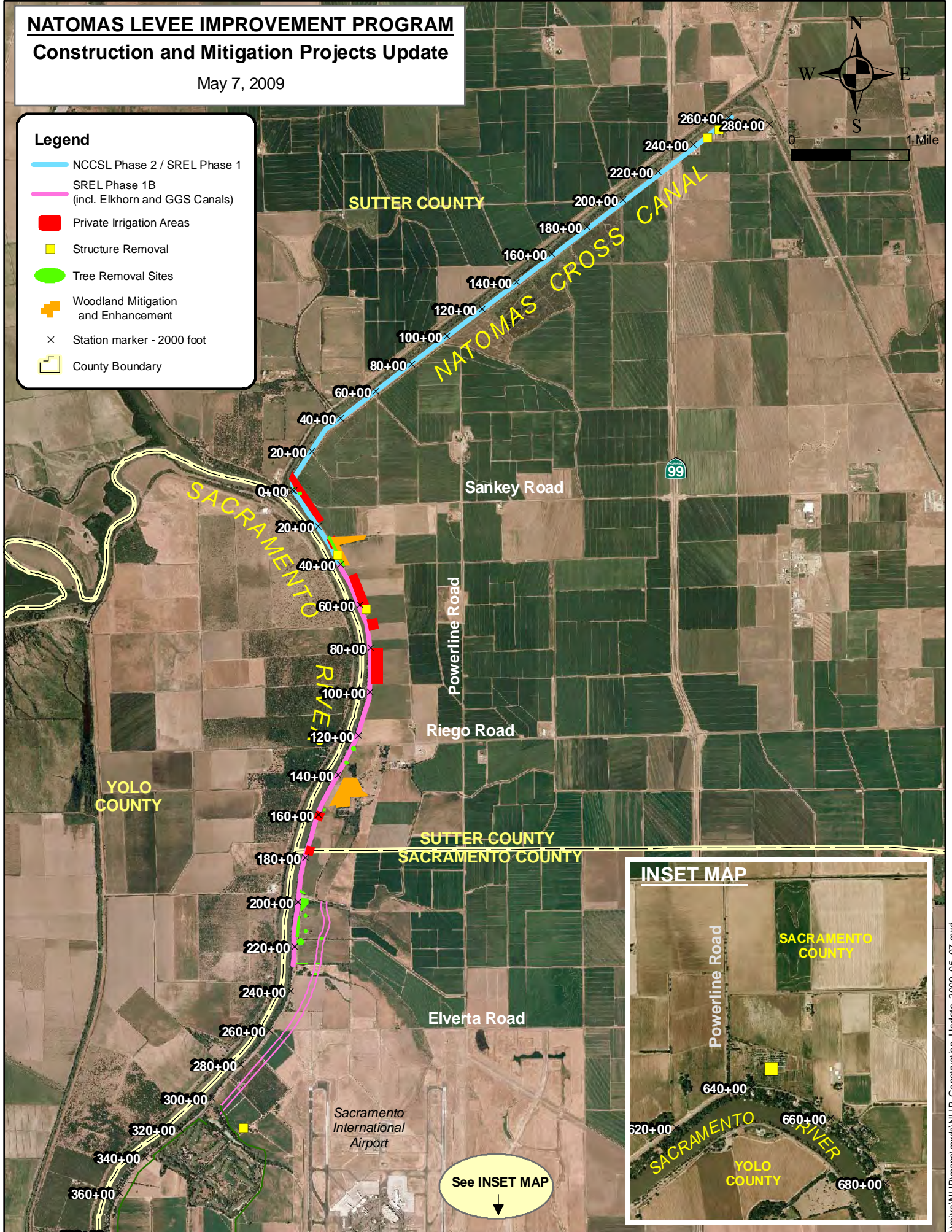
## Construction and Mitigation Projects Update

May 7, 2009



### Legend

- NCCSL Phase 2 / SREL Phase 1
- SREL Phase 1B (incl. Elkhorn and GGS Canals)
- Private Irrigation Areas
- Structure Removal
- Tree Removal Sites
- + Woodland Mitigation and Enhancement
- × Station marker - 2000 foot
- County Boundary



See INSET MAP  
↓