

If you have any questions regarding the project, please visit the SAFCA website at www.safca.org or contact Jay Davis at Gualco Consulting (916) 351-0600 or jdavis@gualco.com

Natomas Levee Improvement Program

Weekly Construction and Mitigation Projects Update

July 31, 2009

(SREL= Sacramento River East Levee NCCSL= Natomas Cross Canal South Levee)

Project	Contractor	Work In Progress	Anticipated Work Next Week	Traffic Controls & Work Hours
NCCSL Phase 2/SREL Phase 1, Reach 1 (from ~ 1.1 mile east of Hwy 99 @ Howsley Rd. to Garden Hwy/Sankey Rd and on Garden Hwy from Sankey Rd. to ~.9 mile south of Sankey Rd)	Teichert Construction	NCC slurry wall construction east and west of Hwy 70, embankment west of Hwy 70 on NCC sta 0+00 to 94+50	NCC slurry wall construction west and east of Hwy 70 to be completed, embankment on NCC, stripping and fill preparation on east side of Garden Hwy N. of Riego Rd., pole relocation work by PG&E	Slurry wall construction west of Hwy 70 will be 24hr/day Monday-Saturday. Howsley Rd/Hwy 70 exit ramps to be closed between 7/6 and 10/15/09, please see detour map on website. Garden Hwy work should not impact traffic
SREL Reaches 1-4A Structure and Tree Removal (Garden Hwy from ~300' north of Sankey Road to ~1.3 miles south of Riego Road)	GW Demolition, Inc.	none	clearing north of Elverta Road	none
SREL Reaches 1-4A Private Irrigation Facility Relocation Project (Garden Hwy from ~300' north of Sankey Road to ~1.3 miles south of Riego Road)	McGuire and Hester	installation of irrigation well, aprox. 1/2 mile north of Riego Road	installation of irrigation well, aprox. 1/2 mile north of Riego Road	no anticipated impacts to traffic, no night work anticipated for next week
Phase 2 Woodland Mitigation & Enhancement Project (~.25 miles south of Rio Ramaza/Garden Hwy)	River Partners	irrigation and mitigation planting	mitigation planting, spreading mulch	no anticipated impacts to traffic, contractor working 8:00 am to 5:00 pm
SREL Phase 1B Reach 2-4B (Garden Highway from ~.9 miles south of Sankey Rd. to ~.5 miles north of Elverta Rd)	Independent Construction	pre-construction activities, issuance of Notice to Proceed	submittals, installation of erosion control measures	TBA: Garden Hwy traffic will be impacted by this project in 2-3 weeks at Prichard Lake Pumping Plant (Reach 4B)- detour maps and schedules to be posted
SREL Design Explorations (levee crown borings) (Garden Highway- between W. Elverta Rd and N. Bayou; between Power Line Rd and San Juan Rd; between Radio Rd and San Juan Rd)	Kleinfelder/HDR	none	no exploration work on levee crown impacting traffic currently planned for next week	no traffic control scheduled

NATOMAS LEVEE IMPROVEMENT PROGRAM

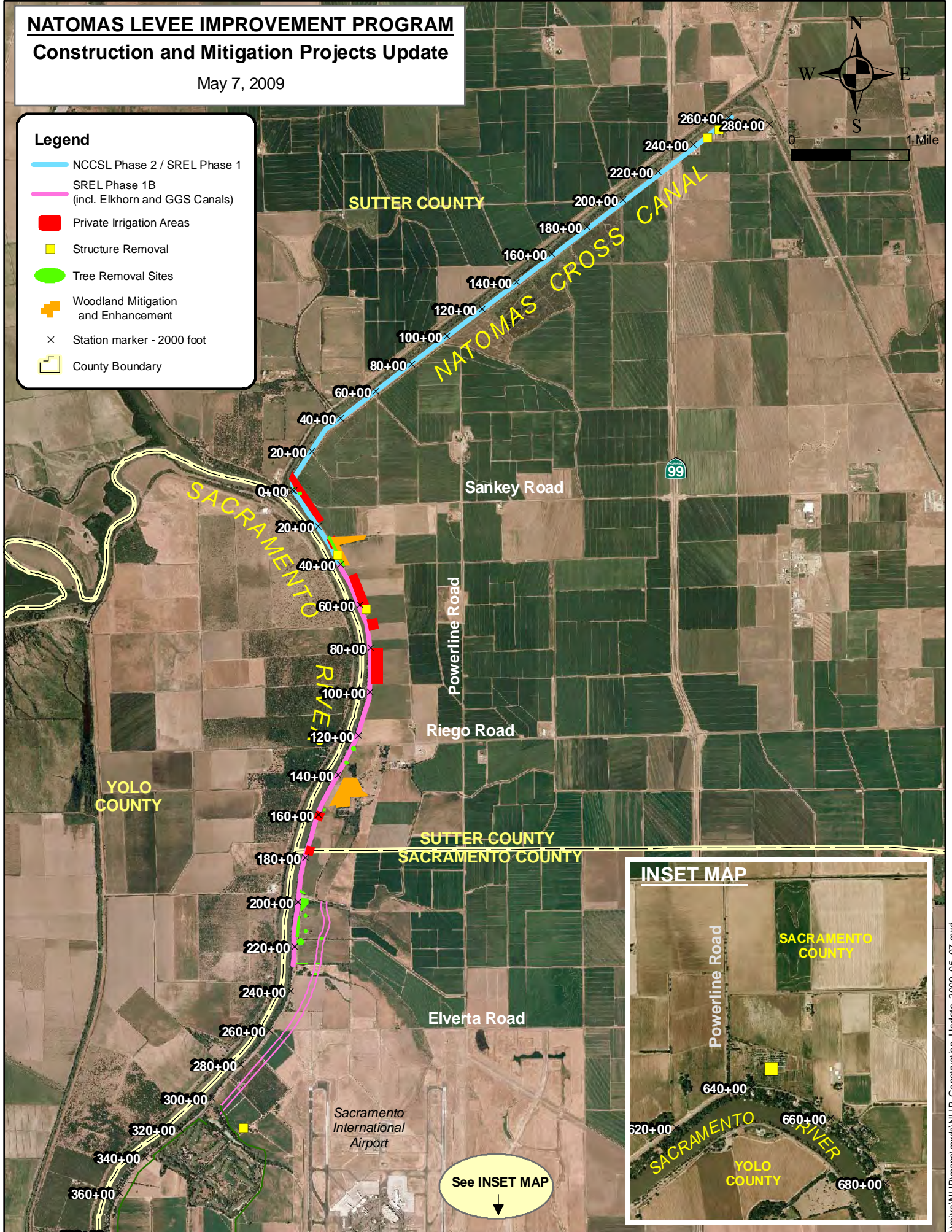
Construction and Mitigation Projects Update

May 7, 2009



Legend

- NCCSL Phase 2 / SREL Phase 1
- SREL Phase 1B (incl. Elkhorn and GGS Canals)
- Private Irrigation Areas
- Structure Removal
- Tree Removal Sites
- + Woodland Mitigation and Enhancement
- × Station marker - 2000 foot
- County Boundary



See INSET MAP
↓