

If you have any questions regarding the project, please visit the SAFCA website at www.safca.org or contact Jay Davis at Gualco Consulting (916) 351-0600 or jdavis@gualco.com

Natomas Levee Improvement Program

Weekly Construction and Mitigation Projects Update

July 2, 2009

(SREL= Sacramento River East Levee NCCSL= Natomas Cross Canal South Levee)

| Project | Contractor | Work In Progress | Anticipated Work Next Week | Traffic Controls & Work Hours |
|--|---|---|---|--|
| NCCSL Phase 2/SREL Phase 1, Reach 1 (from ~ 1.1 mile east of Hwy 99 @ Howsley Rd. to Garden Hwy/Sankey Rd and on Garden Hwy from Sankey Rd. to ~.9 mile south of Sankey Rd) | Teichert Construction | NCC slurry wall construction west of Hwy 70, degrade east of Hwy 70 | NCC slurry wall construction west and east of Hwy 70, backfill of misc. excavations on Garden Hwy N. of Riego Rd. and possible initial pole relocation work by PG&E | Slurry wall construction west of Hwy 70 will be 24hr/day Monday-Saturday. Howsley Rd/Hwy 70 ramps to be closed daily starting 7/6/09, please see detour map on website |
| SREL Reaches 1-4A Structure and Tree Removal (Garden Hwy from ~300' north of Howsley Road to ~1.3 miles south of Riego Road) | GW Demolition, Inc. | brush and trash removal @ Rio Ramaza | removal of concrete slabs, tree removal | no anticipated impacts to traffic, contractor working 7:00 am to 5:00 pm-potential truck crossing on Garden Highway ~.5 south of Sankey Rd. |
| SREL Reaches 1-4A Private Irrigation Facility Relocation Project (Garden Hwy from ~300' north of Howsley Road to ~1.3 miles south of Riego Road) | McGuire and Hester | none | work on drainage distribution boxes, installing irrigation well | no anticipated impacts to traffic, well drilling contractor to be working a day and a night shift, anticipate low level of noise |
| Phase 2 Woodland Mitigation & Enhancement Project (~.25 miles south of Rio Ramaza/Garden Hwy) | River Partners | irrigation and mitigation planting | mitigation planting, spreading mulch | no anticipated impacts to traffic, contractor working 8:00 am to 5:00 pm |
| SREL Phase 1B Reach 2-4B (Garden Highway from ~.9 miles south of Sankey Rd. to ~.5 miles north of Elverta Rd) | bids opened 7/2/09, bid evaluation in progress | none | none | pending |
| SREL Design Explorations (levee crown borings) (Garden Highway- between W. Elverta Rd and N. Bayou; between Power Line Rd and San Juan Rd; between Radio Rd and San Juan Rd) | Kleinfelder/HDR | none | no exploration work on levee crown impacting traffic currently planned for next week | no traffic control scheduled |

NATOMAS LEVEE IMPROVEMENT PROGRAM

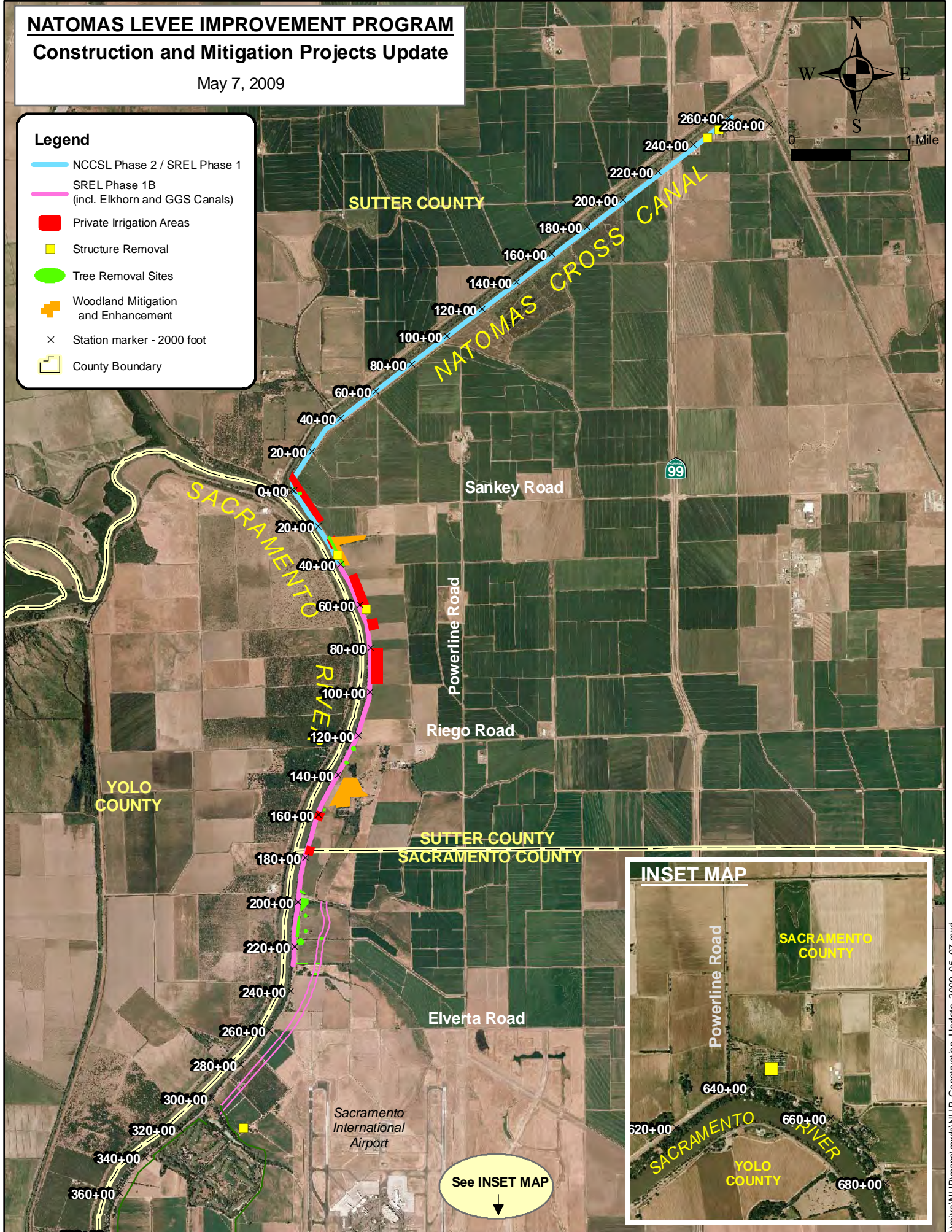
Construction and Mitigation Projects Update

May 7, 2009



Legend

- NCCSL Phase 2 / SREL Phase 1
- SREL Phase 1B (incl. Elkhorn and GGS Canals)
- Private Irrigation Areas
- Structure Removal
- Tree Removal Sites
- + Woodland Mitigation and Enhancement
- × Station marker - 2000 foot
- County Boundary



See INSET MAP
↓