

If you have any questions regarding the project, please visit the SAFCA website at [www.safca.org](http://www.safca.org) or contact Jay Davis at Gualco Consulting (916) 351-0600 or [jdavis@gualco.com](mailto:jdavis@gualco.com)

## Natomas Levee Improvement Program

### Weekly Construction and Mitigation Projects Update

August 20, 2009

(SREL= Sacramento River East Levee NCCSL= Natomas Cross Canal South Levee)

Project	Contractor	Work In Progress	Anticipated Work Next Week	Traffic Controls & Work Hours
<b>NCCSL Phase 2/SREL Phase 1, Reach 1</b> (from ~ 1.1 mile east of Hwy 99 @ Howsley Rd. to Garden Hwy/Sankey Rd and on Garden Hwy from Sankey Rd. to ~.9 mile south of Sankey Rd)	<b>Teichert Construction</b>	Embankment west of Hwy 70 on NCC , slurry backfill, PG&E pulling wires on new poles on east side of Garden Hwy	Completion of slurry wall backfill NCC, embankment on NCC, preparation for slurry wall on east side of Garden Hwy north of Riego Rd., pole relocation work by PG&E- <u>PG&amp;E to provide notice to homeowners regarding temporary power outages</u>	Howsley Rd/Hwy 70 exit ramps to be closed between 7/6/09 and 10/15/09, Sankey Road to be closed between Powerline Rd. and Garden Hwy from 8/7/09 to 11/1/09: Please see detour maps on website. Garden Hwy work should not impact traffic
<b>SREL Reaches 1-4A Structure and Tree Removal</b> (Garden Hwy from ~300' north of Sankey Road to ~1.3 miles south of Riego Road)	<b>GW Demolition, Inc.</b>	clearing north of Elverta Rd	clearing north of Elverta Road	occasional truck traffic off-hauling debris and brush
<b>SREL Reaches 1-4A Private Irrigation Facility Relocation Project</b> (Garden Hwy from ~300' north of Sankey Road to ~1.3 miles south of Riego Road)	<b>McGuire and Hester</b>	installation of irrigation well, aprox. 1/2 mile north of Riego Road	installation of irrigation well, aprox. 1/2 mile north of Riego Road	no anticipated impacts to traffic, no night work anticipated for next week
<b>Phase 2 Woodland Mitigation &amp; Enhancement Project</b> (~.25 miles south of Rio Ramaza/Garden Hwy)	<b>River Partners</b>	mitigation planting	mitigation planting, spreading mulch	no anticipated impacts to traffic, contractor working 8:00 am to 5:00 pm
<b>SREL Design Explorations</b> (Garden Hwy- between W. Elverta Rd and San Juan Rd)	<b>Kleinfelder</b>	installation of piezometers and inclinometers	data collection from instrumentation	traffic control measures will be in place for portions of the day when readings are taken

If you have any questions regarding the project, please visit the SAFCA website at [www.safca.org](http://www.safca.org) or contact Jay Davis at Gualco Consulting (916) 351-0600 or [jdavis@gualco.com](mailto:jdavis@gualco.com)

Natomas Levee Improvement Program Weekly Construction and Mitigations Project Update (Continued)

Project	Contractor	Work In Progress	Anticipated Work Next Week	Traffic Controls & Work Hours
<b>SREL Phase 1B Reach 2-4B</b> (Garden Highway from ~.9 miles south of Sankey Rd. to ~.5 miles north of Elverta Rd)	<b>Independent Construction</b>	submittals, environmental training	submittals, mobilization, processing FAA application, possible installation of erosion and perimeter measures	TBA: Garden Hwy traffic may be impacted by this project in 2009 at the Prichard Lake Pumping Plant- additional info to follow

### Other Flood Control Improvement Projects

Provided below is information regarding other flood control improvements being made in the Natomas Basin that are not part of the Natomas Levee Improvement Program

Project	Description
<b>U.S. Army Corps of Engineers (Corps) Sacramento River Bank Protection Project</b> (Sacramento River Mile 73.5, located between Elverta Road and W. Elkhorn Boulevard)	<p>The Corps is planning to repair an erosion site at River Mile (RM) 73.5 this summer/fall. RM 73.5 is located between Elverta Road and W. Elkhorn Boulevard and will take place on currently vacant, unimproved parcels. This work is being done under the Sacramento River Bank Protection Project (SRBPP). The SRBPP is a long-range program of addressing bank erosion in the Sacramento River system. Generally, the work consists of the placement of rock revetment on the river bank.</p> <p>The length of the repair is approximately 1,100 linear feet. The Corps will be conducting the repairs and accessing the site from the levee rather than from a river barge. Use of the Garden Highway will be necessary to deliver the material to the site. The Corps estimates approximately 64 hauling days to deliver the materials utilizing trucks that can carry 20 cubic yards of material. The project is anticipated to begin in September and will be completed in approximately 150 days. For more information regarding this project, please contact Corps Project Manager, Jim Baker at (916) 557-7550.</p>
<b>U.S. Army Corps of Engineers (Corps) Common Features- Site R-1</b> (Garden Hwy near Orchard Lane)	<p>Reclamation District 1000 (RD 1000) maintains a pumping plant next to the Garden Highway near Orchard Lane to move interior drainage from the Natomas Main Canal to the Sacramento River. The water is pumped through four conduits that go through and under the foundation of the levee adjacent to the RD 1000 offices. Several years ago when the Corps constructed slurry wall in the Garden Highway levee, a "window" was left in the slurry where the conduits are located. This was done to allow for additional analyses of the best way to construct the slurry wall while maintaining the integrity of the outlet conduits. This summer/fall, the Corps will close the 222-foot gap. Construction is expected to begin in early to mid-September and last approximately 8 weeks. The repair will require alternately closing the eastbound and westbound lanes of Garden Highway at the pumping plant location during the eight-week construction period with traffic control in place 24/7.</p> <p>In order to complete the final connection of the two previously constructed seepage cutoff walls, both lanes of the Garden Highway will be closed for no more than three consecutive days. Roadside signage will be posted along Garden Highway in advance of any closures and/or detours. For more information on this project, please contact the Corps Project Manager, John Hoge at (916) 557-5304.</p>

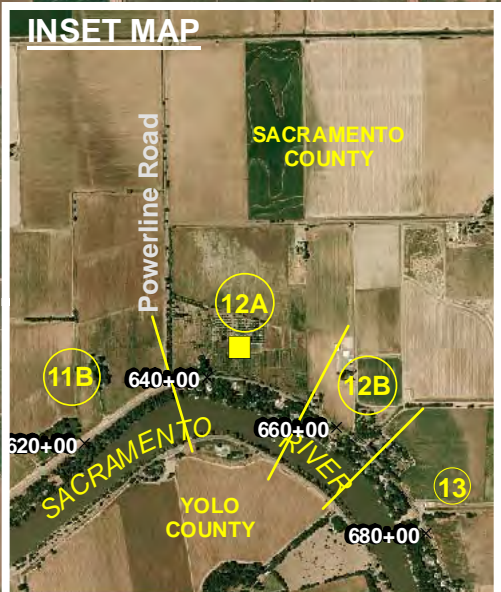
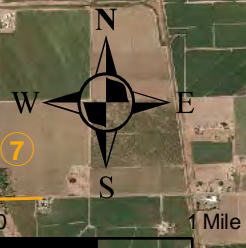
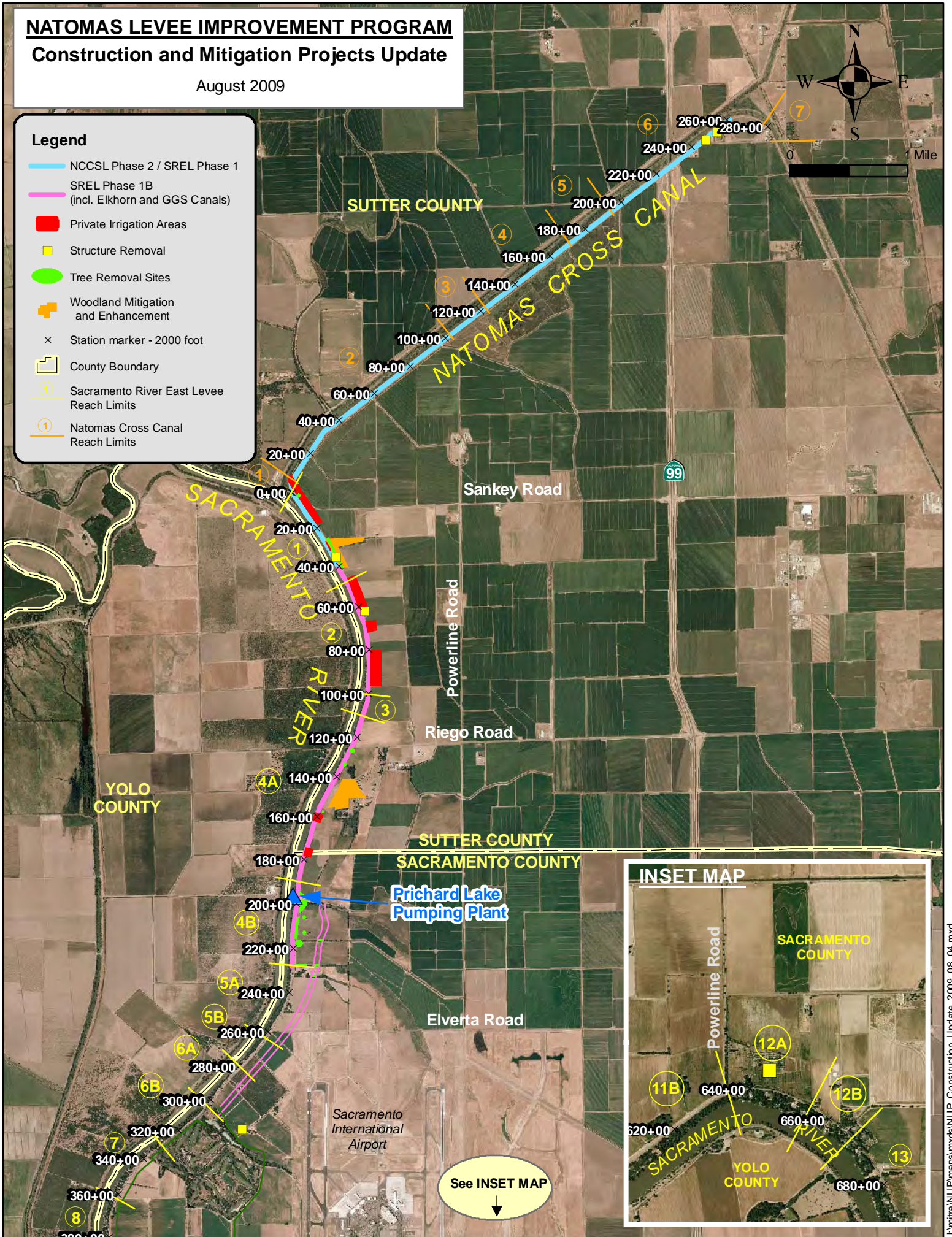
# NATOMAS LEVEE IMPROVEMENT PROGRAM

## Construction and Mitigation Projects Update

August 2009

### Legend

- NCCSL Phase 2 / SREL Phase 1
- SREL Phase 1B  
(incl. Elkhorn and GGS Canals)
- Private Irrigation Areas
- Structure Removal
- Tree Removal Sites
- + Woodland Mitigation and Enhancement
- × Station marker - 2000 foot
- County Boundary
- 1 Sacramento River East Levee Reach Limits
- 1 Natomas Cross Canal Reach Limits



See INSET MAP  
↓