

If you have any questions regarding the project, please visit the SAFCA website at www.safca.org or contact Jay Davis at Gualco Consulting (916) 351-0600 or jdavis@gualco.com

Natomas Levee Improvement Program
 Weekly Construction and Mitigation Projects Update
 August 13, 2009

(SREL= Sacramento River East Levee NCCSL= Natomas Cross Canal South Levee)

Project	Contractor	Work In Progress	Anticipated Work Next Week	Traffic Controls & Work Hours
NCCSL Phase 2/SREL Phase 1, Reach 1 (from ~ 1.1 mile east of Hwy 99 @ Howsley Rd. to Garden Hwy/Sankey Rd and on Garden Hwy from Sankey Rd. to ~.9 mile south of Sankey Rd)	Teichert Construction	NCC slurry wall construction east and west of Hwy 70, embankment west of Hwy 70 on NCC , PG&E pulling wires on new poles on east side of Garden Hwy	Completion of final NCC slurry wall headings, continuation of embankment on NCC, preparation for slurry wall on east side of Garden Hwy N. of Riego Rd., pole relocation work by PG&E	Howsley Rd/Hwy 70 exit ramps to be closed between 7/6 and 10/15/09, Sankey Road to be closed between Powerline Rd. and Garden Hwy from 8/7 to 11/1/09: Please see detour maps on website. Garden Hwy work should not impact traffic
SREL Reaches 1-4A Structure and Tree Removal (Garden Hwy from ~300' north of Sankey Road to ~1.3 miles south of Riego Road)	GW Demolition, Inc.	clearing of north of Elverta Rd	clearing north of Elverta Road	occasional truck traffic off-hauling debris and brush
SREL Reaches 1-4A Private Irrigation Facility Relocation Project (Garden Hwy from ~300' north of Sankey Road to ~1.3 miles south of Riego Road)	McGuire and Hester	installation of irrigation well, aprox. 1/2 mile north of Riego Road	installation of irrigation well, aprox. 1/2 mile north of Riego Road	no anticipated impacts to traffic, no night work anticipated for next week
Phase 2 Woodland Mitigation & Enhancement Project (~.25 miles south of Rio Ramaza/Garden Hwy)	River Partners	irrigation and mitigation planting	mitigation planting, spreading mulch	no anticipated impacts to traffic, contractor working 8:00 am to 5:00 pm
SREL Phase 1B Reach 2-4B (Garden Highway from ~.9 miles south of Sankey Rd. to ~.5 miles north of Elverta Rd)	Independent Construction	submittals, environmental training	submittals, mobilization, processing FAA application	TBA: Garden Hwy traffic will be impacted by this project in 2-3 weeks- detour maps and schedules to be posted

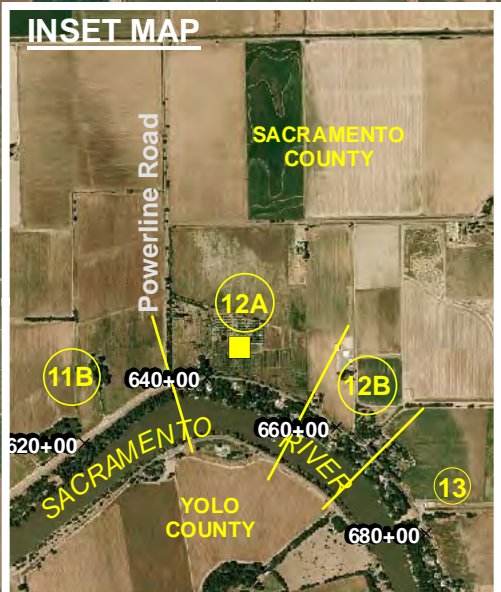
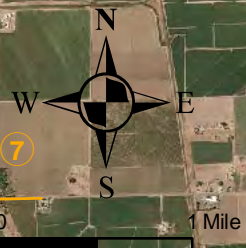
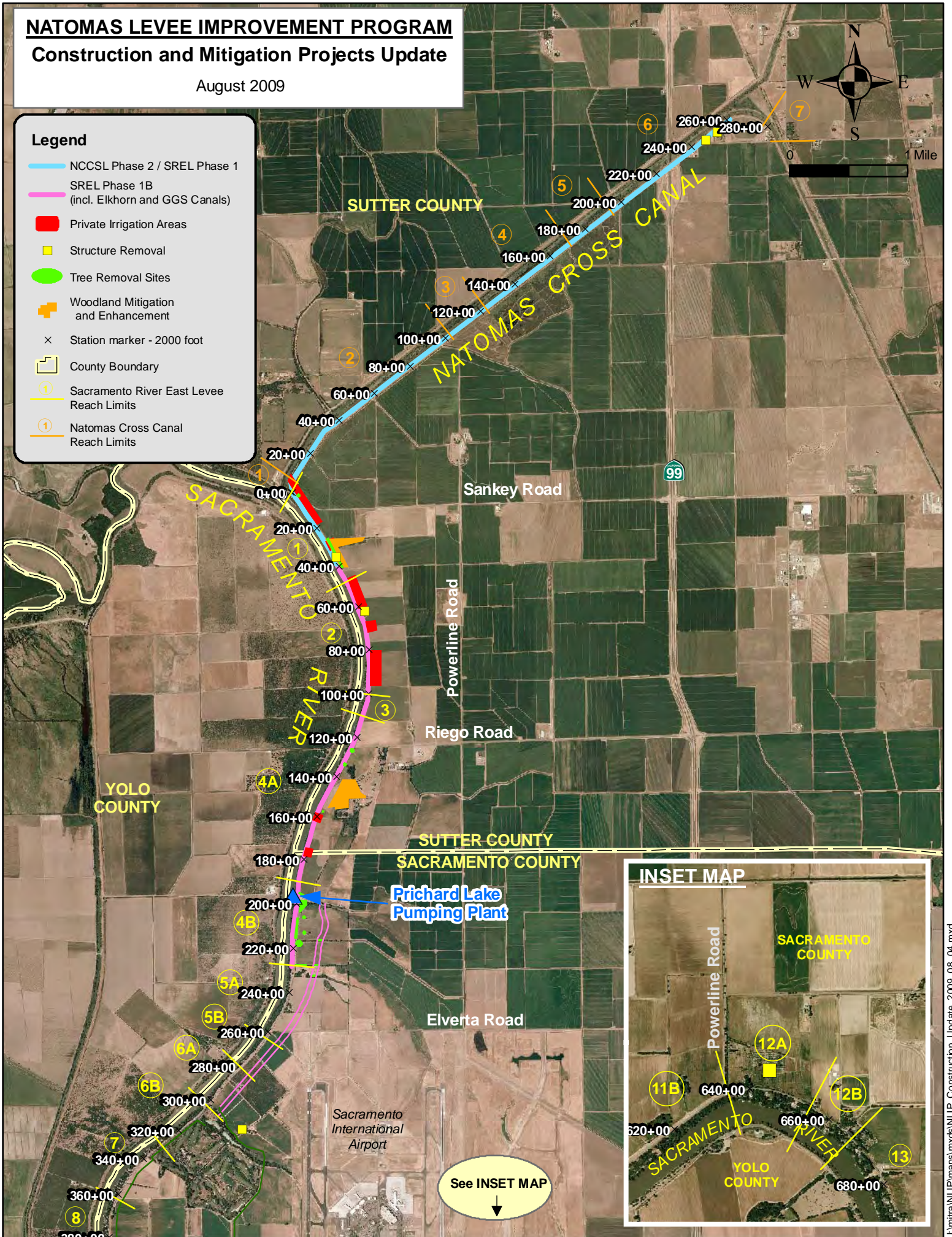
NATOMAS LEVEE IMPROVEMENT PROGRAM

Construction and Mitigation Projects Update

August 2009

Legend

- NCCSL Phase 2 / SREL Phase 1
- SREL Phase 1B
(incl. Elkhorn and GGS Canals)
- Private Irrigation Areas
- Structure Removal
- Tree Removal Sites
- + Woodland Mitigation and Enhancement
- × Station marker - 2000 foot
- County Boundary
- ① Sacramento River East Levee Reach Limits
- ① Natomas Cross Canal Reach Limits



See INSET MAP
↓