



Sacramento River East Levee Phase 1B
Contract No. 4032

**SACRAMENTO AREA FLOOD CONTROL AGENCY
CONTRACT NO. 4032**

**SACRAMENTO RIVER EAST LEVEE PHASE 1B (REACHES 2 THROUGH 4B)
ELKHORN IRRIGATION CANAL PHASE 1 RELOCATION AND GIANT GARTER
SNAKE / DRAINAGE CANAL PHASE 1 CONSTRUCTION PROJECT**

SUBMIT BID TO:

Office, Clerk of the Board
County Administration Center
700 H Street, Suite 2450
Sacramento, California 95814

BID OPENING:

County Administration Center
700 H Street, Suite 2450
Sacramento, California 95814

**NO LATER THAN: 2:00 P.M.
DAY OF BID**

**APPROXIMATELY: 2:10 P.M.
FOLLOWING BID SUBMITTAL**

TO: Honorable Board of Director
Sacramento Area Flood Control Agency

I. BID

Pursuant to your published Notice to Contractors for the above-referenced projects, and in accordance with the approved Plans and Specifications for that project, the following bid for said entire project is submitted by the firm indicated on Sheet 12 of this Bid Form.

Total Bid Price to be the total of the Lump Sum Cost and Unit Prices as described in the following bid tables:

Bid Schedule A – Sacramento River East Levee Phase 1B - Reaches 2-4A (Plan Volume 2A) * (Updated June 26, 2009)					
Line Item No.	Item Description	Quantity	Unit	Unit Price	Total Price
A1	Mobilization and Demobilization	1	LS		41,500.00
A2	Storm Water Pollution Control	1	LS		7,500.00
A3	Temporary Protective Fencing	2,600	LF	1.00	2,600.00
A4	Clearing and Grubbing	53.2	AC	500.00	26,600.00
A5	Levee and Canal Stripping	53.2	AC	1,500.00	79,800.00
A6	Mowing and Discing	4.1	AC	2,250.00	9,225.00
A7	Demolition	1	LS		17,000.00
A8	Excavate Stability Berm	72,400	CY	6.00	434,400.00
A9	Levee Foundation and Miscellaneous Excavations	35,100	CY	2.00	70,200.00
A10	Random Fill	168,700	CY	2.40	404,880.00
A11	Levee Embankment	859,800	CY	2.85	2,450,430.00
A12	Soil Bentonite Cutoff Wall [S]	677,100	SF	6.00	4,062,600.00
A13	Erosion Control Seeding	56.2	AC	1,600.00	89,920.00
A14	Class 2 Aggregate Base	19,900	TN	17.50	348,250.00
A15	Unsuitable Debris	4,000	TN	6.00	24,000.00
A16	Construct Interim Termination	1	LS		7,500.00
A17	Remove Interim Termination	2	EA	2,500.00	5,000.00
SUBTOTAL BID SCHEDULE A:					8,519,405.00

* See notes following Bid Schedule Summary Table.

Bid Schedule B – Roadways and Roadway Drainage (Plan Volume 2A)*					
Line Item No.	Item Description	Quantity	Unit	Unit Price	Total Price
B1	Mobilization and Demobilization	1	LS		22500-
B2	Temporary Traffic Control System	1	LS		125000-
B4	Drainage Inlet Type "F" (including Grate)	9	EA	2000 ⁰⁰	18000-
B5	24" Reinforced Concrete Pipe	612	LF	75 ⁰⁰	45900-
B6	Rock Slope Protection – Type 1, No. 3	140	TN	35 ⁰⁰	4900-
B7	Rock Slope Protection – Type 2, Facing	900	TN	35 ⁰⁰	31500-
B8	Cobblestone	20	TN	40 ⁰⁰	800-
B9	Bedding Material	185	TN	35 ⁰⁰	6475-
B10	Saw Cutting	400	LF	5 ⁰⁰	2000-
B11	Lime Modified Soil	910	CY	20 ⁰⁰	18200-
B12	Class 2 Aggregate Base	1,530	TN	17 ⁵⁰	26715-
B13	Relocate Roadside Sign	5	EA	150 ⁰⁰	750-
B14	Remove Asphalt Concrete Surfacing	2,730	SY	3 ⁵⁰	9555-
B15	Remove Portland Cement Concrete Surfacing	1,100	SY	4 ⁰⁰	4400-
B16	Roadway Excavation	1,900	CY	5 ⁰⁰	9500-
B17	Asphalt Concrete Paving (Type A)	1,400	TN	75 ⁰⁰	105000-
B18	Roadside Sign – One Post	2	EA	250 ⁰⁰	500-
B19	4" Solid Yellow Thermoplastic Stripe	4,528	LF	1 ⁰⁰	4528-
B20	4" Solid White Thermoplastic Stripe	2,067	LF	1 ⁰⁰	2067-
B21	12" Solid White Thermoplastic Traffic Stripe	29	LF	5 ⁰⁰	145-
B22	Thermoplastic Pavement Marking	67	SF	5 ⁰⁰	335-
B23	Pavement Marker (Retro reflective)	190	EA	4 ⁰⁰	760-
B24	Pipe Gate	12	EA	2750 ⁰⁰	33000-
SUBTOTAL SCHEDULE B:					472590-

* See notes following Bid Schedule Summary Table.
 Updated on April 2, 2009

Bid Schedule C – Private Irrigation Facility Relocation (Plan Volume 2B)* <i>updated June 17, 2009</i>					
Line Item No.	Item Description	Quantity	Unit	Unit Price	Total Price
C1	Mobilization and Demobilization	1	LS		25000-
C2	Temporary Protective Fencing	542	LF	1 ⁰⁰	542-
C3	Demolition	1	LS		60000-
C4	10-Inch Gate Valve in Box	2	EA	1750 ⁰⁰	3500-
C5	3-Inch Siphon/Air Valve in Vault	2	EA	4500-	9000-
C6	30 HP Vertical Turbine Well Pump	1	EA	80000-	80000-
C7	15-Inch Perforated Drain Line	5,766	LF	37 ⁵⁰	216225-
C8	10-Inch Welded Steel Pipe	250	LF	200 ⁰⁰	50000-
C9	14-Inch Welded Steel Pipe	312	LF	300 ⁰⁰	93600-
C10	Bollards	4	EA	225 ⁰⁰	900-
C11	Well Mobilization/Demobilization	1	LS		53000-
C12	Test Boring	350	VF	50 ⁰⁰	17500-
C13	Outer Borehole Drilling (36-inch diameter)	50	VF	350 ⁰⁰	17500-
C14	30-Inch Conductor Casing	50	VF	200 ⁰⁰	10000-
C15	Borehole Drilling (26-inch Diameter)	300	VF	100 ⁰⁰	30000-
C16	16-Inch Well Casing	80	VF	125 ⁰⁰	10000-
C17	Blank Casing (16-inch diameter)	110	VF	125 ⁰⁰	13750-
C18	Wire Wrapped Well Screen	100	VF	225 ⁰⁰	22500-
C19	Filter Pack	250	VF	50 ⁰⁰	12500-
C20	Sanitary Seal	50	VF	100 ⁰⁰	5000-
C21	Well Development and Testing	1	LS		20000-
C22	Water Quality Testing	1	LS		5000-
C23	Well Disinfection	1	LS		1000-
C24	Well Site Cleanup	1	LS		2500-
SUBTOTAL SCHEDULE C:					759017-

* See notes following Bid Schedule Summary Table.

Bid Schedule D - North Airport Borrow Sites 1-4 (Plan Volume 2C) *					
Line Item No.	Item Description	Quantity	Unit	Unit Price	Total Price
D1	Mobilization and Demobilization	1	LS		400,000.-
D2	Silt Fence	30,500	LF	1 ⁰⁰	30,500.-
D3	Surface Layer Removal, Stockpile, and Respread	480	AC	2500 ⁰⁰	1,200,000.-
D4	Temporary Protective Fencing	6,250	LF	1 ⁰⁰	6,250.-
D5	Borrow Site Excavation	2,300,000	CY	3 ¹⁰	7,130,000.-
D6	Rock Slope Protection (Type 2)	1,400	TN	35 ⁰⁰	49,000.-
D7	18-Inch Reinforced Concrete Pipe	2,000	LF	27 ⁰⁰	54,000.-
D8	24-Inch Reinforced Concrete Pipe	270	LF	36 ⁰⁰	9,720.-
D9	36-Inch Reinforced Concrete Pipe	60	LF	54 ⁰⁰	3,240.-
D10	48-Inch Reinforced Concrete Pipe	80	LF	96 ⁰⁰	7,680.-
D11	Precast Concrete Inlet	15	EA	1750 ⁰⁰	26,250.-
D12	Pipe Gate	3	EA	2750 ⁰⁰	8,250.-
D13	Concrete Headwall	13	CY	600 ⁰⁰	7,800.-
D14	Canal Embankment	16,500	CY	150	2,4750.-
D15	48-Inch Slide Gate	1	EA	7500 ⁰⁰	7,500.-
D16	Irrigation Turnouts	3	EA	12500 ⁰⁰	37,500.-
SUBTOTAL SCHEDULE D:					9,002,440.-

* See notes following Bid Schedule Summary Table.

Bid Schedule E - Elkhorn Canal Phase 1 Relocation and GGS/Drainage Canal Phase 1 from SREL Reach 4B to 6A (Plan Volume 3A)*					
<i>(Updated June 26, 2009)</i>					
Line Item No.	Item Description	Quantity	Unit	Unit Price	Total Price
E1	Mobilization and Demobilization	1	LS		230,000.-
E2	Storm Water Pollution Control	1	LS		7500.-
E3	Demolition	1	LS		41500.-
E4	Dewatering	1	LS		10000.-
E5	Silt Fencing	13,420	LF	1 ⁰⁰	13420.-
E6	Temporary Protective Fencing	2,130	LF	1 ⁰⁰	2130.-
E7	Clearing and Grubbing	73	AC	1000 ⁰⁰	73000.-
E8	Levee and Canal Stripping	73	AC	750 ⁰⁰	54750.-
E9	GGs and Elkhorn Canal Excavation	72,000	CY	2 ²⁵	162000.-
E10	Canal Embankment	278,700	CY	3 ⁷⁰	1,031,190.-
E11	Random Fill	65,500	CY	2 ⁵⁰	163750.-
E12	Compacted Earth Lining	3,000	CY	7 ⁵⁰	22500.-
E13					
E14	Class 2 Aggregate Base	11,645	TN	18 ⁰⁰	209610.-
E15	Asphalt Concrete	100	TN	120 ⁰⁰	12000.-
E16	Saw Cutting	50	LF	5 ⁰⁰	250.-
E17					
E18	Rock Slope Protection - Type 2	1,700	TN	35 ⁰⁰	59500.-
E19	Rock Slope Protection - Type 4	695	TN	35 ⁰⁰	24325.-
E20	Cast-In-Place Concrete	44	CY	500 ⁰⁰	22000.-
E21	12-Inch Reinforced Concrete Pipe	88	LF	24 ⁰⁰	2112.-
E22	36-Inch Reinforced Concrete Pipe	430	LF	90 ⁰⁰	38700.-
E23	48-Inch Reinforced Concrete Pipe	1,655	LF	96 ⁰⁰	158880.-
E24	54-Inch Reinforced Concrete Pipe	60	LF	108 ⁰⁰	6480.-
E25	24-Inch HDPE Pipe	235	LF	48 ⁰⁰	11280.-
E26	30-Inch HDPE Pipe	460	LF	175 ⁰⁰	80500.-

Bid Schedule E - Elkhorn Canal Phase 1 Relocation and GGS/Drainage Canal Phase 1 from SREL Reach 4B to 6A (Plan Volume 3A)*					
(Updated June 26, 2009)					
Line Item No.	Item Description	Quantity	Unit	Unit Price	Total Price
E27	36-Inch HDPE Pipe	600	LF	225 ⁰⁰	135000-
E28	30-Inch Welded Steel Pipe	600	LF	175 ⁰⁰	105000-
E29	36-Inch Welded Steel Pipe	1,325	LF	275 ⁰⁰	364375-
E30	48-Inch Canal Gate	2	EA	7500 ⁰⁰	15000-
E31	30-Inch Butterfly Valve with Riser	1	EA	12500 ⁰⁰	12500-
E32	36-Inch Butterfly Valve with Riser	2	EA	15000 ⁰⁰	30000-
E33	Concrete Arch Culvert	755	LF	800 ⁰⁰	604000-
E34	Irrigation Turnout	14	EA	15000 ⁰⁰	210000-
E35	Precast Twin Track Weir	3	EA	3000 ⁰⁰	9000-
E36	Prichard Distribution Box	1	LS		50000-
E37	Elkhorn Distribution Box	1	LS		37500-
E38	Flume Connection	1	LS		150000-
E39	GGs Check Structure	6	EA	12500 ⁰⁰	75000-
E40	Bollards	16	EA	225 ⁰⁰	3600-
E41	Hibernacula	12	EA	5000 ⁰⁰	60000-
E42	Erosion Control Seeding	67	AC	1600 ⁰⁰	107200-
E43					
E44					
E45					
E46	Sheetpile Cofferdam	80	LF	2700 ⁰⁰ 700 ⁰⁰	216,000- 56,000- RB
E47	GGs/Drainage Canal Water Supply	1	LS		17500-
E48	Moody Ditch Outlet Structure	1	LS		12500-
E49	Sedimentation Basin Drainage Outlet	1	LS		7500-
E50	Sedimentation Basin Weir	2	EA	6000 ⁰⁰	12000-
E51	Prichard Concrete Vault Connection	1	LS		50000-
E52	Calpine Gas Line Relocation at GGS Canal STA 30+00	1	LS		7500-

Bid Schedule E - Elkhorn Canal Phase 1 Relocation and GGS/Drainage Canal Phase 1 from SREL Reach 4B to 6A (Plan Volume 3A)*					
(Updated June 26, 2009)					
Line Item No.	Item Description	Quantity	Unit	Unit Price	Total Price
E53	Calpine Gas Line Relocation at GGS Canal STA 55+00	1	LS		8500.-
E54	Pumping Plant 2 Foundation Excavation	63,000	CY		110250.-
SUBTOTAL SCHEDULE E:					4,687,302.- 4847302.- <i>2B</i>

* See notes following Bid Schedule Summary Table.

Bid Schedule F – Sacramento River East Levee Phase 1B - Reach 4B (Plan Volume 3B) *					
(Updated June 26, 2009)					
Line Item No.	Item Description	Quantity	Unit	Unit Price	Total Price
F1	Mobilization and Demobilization	1	LS		8500.-
F2	Storm Water Pollution Control	1	LS		7500.-
F3	Temporary Protective Fencing	1,000	LF	1 ⁰⁰	1000.-
F4	Silt Fencing	5,000	LF	1 ⁰⁰	5000.-
F5	Clearing and Grubbing	23.9	AC	500 ⁰⁰	11950.-
F6	Levee and Canal Stripping	23.9	AC	1500 ⁰⁰	35850.-
F7	Mowing and Discing	16.5	AC	2250 ⁰⁰	37125.-
F8	Demolition	1	LS		7500.-
F9	Excavate Stability Berm	11,400	CY	6 ⁰⁰	68400.-
F10	Levee Foundation and Miscellaneous Excavations	52,900	CY	2 ⁰⁰	105800.-
F11	Random Fill	330,300	CY	2 ²⁰	726,660.-
F12	Levee Embankment	161,000	CY	2 ⁵⁰	402500.-
F14	Erosion Control Seeding	43.8	AC	1600 ⁰⁰	70080.-
F15	Class 2 Aggregate Base	4,000	TN	17 ⁵⁰	70000.-
F16	Asphalt Concrete Paving (Type A)	100	TN	120 ⁰⁰	12000.-
F17	Unsuitable Debris	1,000	TN	6 ⁰⁰	6000.-
F18	Drainage Inlet Type "F" (including Grate)	2	EA	1750 ⁰⁰	3500.-
F19	24" Reinforced Concrete Pipe	140	LF	48 ⁰⁰	6720.-

Bid Schedule F – Sacramento River East Levee Phase 1B - Reach 4B (Plan Volume 3B) *					
(Updated June 26, 2009)					
Line Item No.	Item Description	Quantity	Unit	Unit Price	Total Price
F20	Rock Slope Protection – Type 1, No. 3	19	TN	35 ⁰⁰	665 -
F21	Rock Slope Protection – Type 2, Facing	226	TN	35 ⁰⁰	7910 -
F22	Bedding Material	44	TN	35 ⁰⁰	1540 -
F23	Construct Interim Termination	1	LS		7500 -
F24	Calpine Gas Line Relocation at Garden Highway	1	LS		3750 -
F25	Inspection Trench Excavation	7,800	CY	2 ⁰⁰	15600 -
F26	Dewatering	1	LS		17500 -
SUBTOTAL SCHEDULE F:					1,874,550.

* See notes following Bid Schedule Summary Table.

Bid Schedule G –General Project Requirements (Volume 1) *					
Line Item No.	Item Description	Quantity	Unit	Unit Price	Total Price
G1	Builder's Risk Insurance	1	LS		75000 -
SUBTOTAL SCHEDULE G:					75000 -

* See notes following Bid Schedule Summary Table.

SUBTOTAL SCHEDULE A:	8,579,405. -
SUBTOTAL SCHEDULE B:	472,590 -
SUBTOTAL SCHEDULE C:	759,017 -
SUBTOTAL SCHEDULE D:	9,002,440. -
SUBTOTAL SCHEDULE E:	4,847,302. -
SUBTOTAL SCHEDULE F:	1,874,550. -
SUBTOTAL SCHEDULE G:	75,000 -
TOTAL BID SCHEDULE (A+B+C+D+E+F+G):	25,550,304. -

Notes:

1. All quantities are in-place quantities.
2. Prices must be submitted on all individual items for this Bid Schedule. Failure to do so will result in rejection of bids.
3. See General Specification Section 8-1 regarding payment for mobilization and demobilization.
4. Items designated {S} are Specialty items, see General Specification Section 2-8.

II. ADDENDA

Acknowledgement is hereby made of receipt and incorporation of addendum, number J through 12 into this Bid.

III. BID GUARANTY

Bid Security must be a bidders bond, a certified check or cashier's check payable to Sacramento Area Flood Control Agency.

Bid secured by personal checks or personal guarantees will be rejected.

IV. AFFIDAVIT OF NON-COLLUSION

The bidder swears and deposes that he or she is the party making the foregoing bid, that the bid is not made in the interest of, or on behalf of, any undisclosed person, partnership, company, association, organization, or corporation; that the bid is genuine and not collusive or a sham; that the bidder has not directly, or indirectly, colluded, conspired, connived, or agreed with any bidder or anyone else to put in a sham bid, or that anyone shall refrain from bidding; that the bidder has not in any manner, directly or indirectly sought by agreement, communication, or conference with anyone to fix the bid price of the bidder or any other bidder, or to fix any overhead, profit, or cost element of the bid price, or of that of any bidder, or to secure any advantage against the public body awarding the contract or anyone interested in the proposed contract; that all statements contained in the bid are true; and further, that the bidder has not, directly or indirectly submitted his or her bid price or any breakdown thereof, or the contents thereof, or divulged information or data relative thereto, or paid, and will not pay, any fee to any corporation, partnership, company association, bid depository, or to any member or agency thereof to effectuate a collusive or sham bid.

V. DEBARMENT

The bidder/contractor certifies, by submission of this proposal or acceptance of this contract, that neither it nor its principals are presently debarred, suspended, proposed for debarment, declared ineligible or voluntarily excluded from participation in a federally-funded contract by any Federal department or agency. It further agrees by submitting this proposal that it will include this clause without modification in all lower tier transactions, solicitations, proposals, contracts, and subcontracts. Where the bidder/contractor or any lower tier participant is unable to certify to this statement, it shall attach an explanation to this solicitation/proposal.

The bidder/contractor is directed to General Specification Section 2-16 regarding this certification.

VI. BID ATTACHMENTS

A. Subcontractor Listing

In accordance with the California Public Contract Code, Division 2, Part 1, Chapter 4, Section 4100 and following, the subcontractors listed on Attachment A to this Bid Form will perform the indicated work on improvement on this project. Attachment A is hereby incorporated into and made a part of this bid.

B. Bidders experience questionnaire (Attachment B).

To demonstrate that the bidder's experience conforms to the requirements set forth in the contract specifications, Attachment B is hereby incorporated into and made part of this bid.

VII. TYPE OF BUSINESS (CHECK ONE)

- CORPORATION
STATE OF INCORPORATION: Nevada
- PARTNERSHIP
- JOINT VENTURE
- PRIVATE INDIVIDUAL
- INDIVIDUAL DOING BUSINESS UNDER A FIRM NAME

VIII. FIRM

Firm Name: Nordic Industries, Inc.

Mailing Address: 1437 Furneaux Road

Olivehurst, CA 95961

Physical Address: 1437 Furneaux Road

Olivehurst, CA 95961

Telephone: (530) 742-7124

Fax: (530) 742-5545

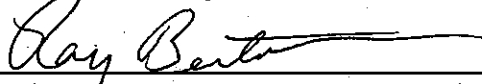
Contractor's License Number: 592271

Contractor's License Expiration Date: 4/30/2010

Contractor's License Classification: A

I hereby certify under penalty of perjury that the above statements are true.

Bid and certification submitted by:

Signature: 
(Authorized Representative)

Print: Ray Bertelsen

Title: Vice President

ATTACHMENT A

DESIGNATION OF SUBCONTRACTORS

The following are the portions (types), name and location of places of business of all subcontractors who will perform work or labor or render service to the bidder in an amount in excess of one-half of one percent (0.5%) of the General Contractor's Total Bid. The Bidder is directed to General Specification Section 2-8 regarding the listing of subcontractors.

The bidder shall include the license numbers for each listed subcontractor with the bid. The low bidder, or apparent low bidder, shall submit the license numbers of all other subcontractors within three (3) days, not counting Saturdays, Sundays and holidays, of the bid opening.

Portion of Work	Subcontractor/Entity	License Number	Place of Business
Seeding	Selby's Soil Erosion	797658	Loomis, CA
Concrete	Get 'R' Done	833987	Lodi, CA
Fence	Pisor Fence	316128	Citrus Heights, CA
Paving	James Riolo Paving	431774	Rio Linda, CA
Sheet Pile	Blue Iron Inc.	652333	West Sacramento, CA

ATTACHMENT B

BIDDER'S EXPERIENCE QUESTIONNAIRE

INSTRUCTIONS:

The bidder shall submit to the Agency, with the proposal, a fully-completed copy of this questionnaire, wherein the bidder submits his/her own and appropriate subcontractor's qualifications and experience in performing work. Failure to comply with this requirement shall render the bid non-responsive and shall result in its rejection. Supplemental sheets may be included as required to provide information.

See attached pages for the following areas:

Section 1 Earthwork Contractor's Qualifications

Section 2 Earthwork Contractor's Project Personnel's Qualifications

Section 3 Cutoff Wall (Sub)Contractor's Qualifications

Section 4 Cutoff Wall (Sub)Contractor's Personnel's Qualifications

Section 5 Contractor's General References

Section 1 – Earthwork Contractor's Qualifications. List at least three (3) levee or dam projects that the Contractor has completed since January 1, 1990. Briefly describe construction activities, emphasizing similar construction activities to this project specifically including (1) levee or dam construction, or (2) levee or dam degrading and reconstruction for the purposes of cutoff wall construction. Projects shall have included a minimum levee or dam embankment quantity of 75,000 cubic yards.

Project 1: Name: Phase 4 - Feather River Levee Repair Project
Location: Yuba County
Start Date: August 2007 Embankment Quantity: 150,000 +
Completion Date: December 2008 Contract Amount: \$17,324,129
Owner's Representative: TRLIA
Owner Contact; Name: Doug Handen Phone: (916) 425-4662
Construction Activity Description: _____
* Levee degrade, install SCB Cutoff Wall and reconstruct levee
* Degrade waterside toe of levee, install SB Cutoff Wall and restore levee
* Misc levee embankments (slope flattening, seepage berms, etc)
* Relocate pump station outfall piping
Performed Work as: Prime Contractor Yes Subcontractor _____
Yes/No Yes/No

Project 2 Name: Phase 4 - Yuba River Levee Repair
Location: Yuba County
Start Date: September 2006 Embankment Quantity: 100,000 CY +
Completion Date: November 2006 Contract Amount: \$12,984,471
Owner's Representative: TRLIA
Owner Contact; Name: Doug Handen Phone: (916) 425-4662
Construction Activity Description: _____
* Levee degrade
* Levee reconstruction
* SCB cutoff walls
* Seepage berms
* Other levee fills
Performed Work as: Prime Contractor Yes Subcontractor _____
Yes/No Yes/No

Project 3 Name: Phase II - Bear River, WP Interceptor Canal & Yuba River Levee Repair

Location: Yuba County

Start Date: April 2005 Embankment Quantity: 400,000 CY

Completion Date: April 2006 Contract Amount: \$32,563,143

Owner's Representative: TRLIA

Owner Contact, Name: Doug Handen Phone: (916) 425-4662

Construction Activity Description: _____

* Pump station

* Levee excavation and embankments

* Storm drain detention basin excavation

* Levee degrade and reconstruction for slurry wall

Performed Work as: Prime Contractor Yes Subcontractor Yes/No

Project 4 Name: Bear River Setback Levee

Location: Yuba County

Start Date: April 2006 Embankment Quantity: 800,000 CY

Completion Date: December 2006 Contract Amount: \$11,430,743

Owner's Representative: GEI (for TRLIA)

Owner Contact, Name: John Dahl Phone: (916) 717-0162

Construction Activity Description: _____

Construct setback levee

Performed Work as: Prime Contractor Yes Subcontractor Yes/No

NORDIC INDUSTRIES, INC.
CONTRACTOR'S STATEMENT OF EXPERIENCE

Year Completed	Job Name	Type of Work	Location of Work	Value	Owner	Project Management/Inspection	Project Manager	Phone No.
2002	Robla Creek South Levee and NEMDEC West Levee Improvement Project Contract #3335	Levee Improvements	Rio Linda, CA	\$5,766,290	Sacramento Area Flood Control Agency	County of Sacramento	John Bassett	916-704-8731
2002	Garden Highway Repair Project	Slurry Wall	Sacramento, CA	\$504,125	Sacramento Area Flood Control Agency	Parsons Brickerhoff	John Bassett	916-704-8731
2003	Rio Del Oro Units 1, 2, & 3	Subdivision	Plumas Lake, CA	\$17,229,185	Beazer Homes	Yuba County	Permlinder Bains	530-682-7875
2004	Metro Air Park	Site Grading & Drainage	Sacramento, CA	\$12,867,528	Metro Air Park LLC	Project Management, Inc	Gary Albertson	916-375-0200
2005	Plumas Lake Offsite Drainage Channel	Grading & Drainage	Yuba County, CA	\$2,677,796	Cresleigh Homes	MSA/RD 784	Rick Hanson	916-788-4456
2005	Ella Detention Basin	Grading	Yuba County, CA	\$980,000	Mike Smith	MHM Engineering	Sean Minard	530-742-6485
2006	Bear River Setback Levee Contract #PH3-2005/06-02	Levee Improvements	Yuba County, CA	\$11,430,743	Three Rivers Levee Improvement Agency	GEI Consultants	John Dahl	916-717-0162
2006	Phase 1V-Yuba River Levee Repair Contract #PH4-2006/07/04	Slurry Wall	Linda, CA	\$12,984,471	Three Rivers Levee Improvement Agency	HDR Engineering	Blake Johnson	916-204-6869
2006	Clark Diversion Channel Contract #02-147	Levee Improvements	Yuba County, CA	\$426,025	Reclamation District 784	MHM/RD 784	Rick Goss	530-308-6544
2006	IDIQ Emergency Levee Repair, Contract # W91238-04-D-0002	Emergency Flood Control & River Bank Protection	Northern California	\$2,843,146	Army Corps of Engineers	Army Corps of Engineers	Brian Poole	916-557-7813
2006	Phase II Levee Repair Project, Contract #PH4-2007-08-01	Levee Improvements	Yuba County, CA	\$33,960,765	Three Rivers Levee Improvement Agency	HDR Engineering	Blake Johnson	916-204-6869
2007	Sacramento River - RM/56.9R & 69.9R, Contract #C51329	River Bank Repair & Protection	Sacramento County, CA	\$8,694,800	State of California, Department of Water Resources	DWR	Rob Fill	916-679-2245
2007	Sacramento River - RM 130.8 thru 164.0, Contract #51330	River Bank Repair & Protection	Colusa County, CA	\$39,496,334	State of California, Department of Water Resources	DWR	Rob Fill	916-679-2245

NORDIC INDUSTRIES, INC.
CONTRACTOR'S STATEMENT OF EXPERIENCE

Year Completed	Job Name	Type of Work	Location of Work	Value	Owner	Project Management/Inspection	Project Manager	Phone No.
2007	South Sacramento Streams 1.B.1, Contract W91238-06-C-0020	Flood Control Project	Sacramento, CA	\$18,142,010	Army Corps of Engineers	Army Corps of Engineers	Ryan Larson	916-557-7569
2008	South Sacramento Streams 1.B.2, Contract W91238-06-C-0020 (Subcontractor to SMP Services)	Flood Control Project	Sacramento, CA	\$18,282,139	Army Corps of Engineers	Army Corps of Engineers	Ryan Larson (COE - PM) Frank Garrison (SMP PM)	916-557-7569 916-761-1242
2008	Phase 4 Feather River Levee Repair Project, Contract #PH4-2007/08-01	<i>SB WALK 10-7</i> Levee Improvements	<i>176,000sf</i> <i>281,000sf</i> Yuba County, CA	\$17,324,129	Three Rivers Levee Improvement Agency	GEI Consultants	John Dahl	916-717-0162
2008	Coyote Dam Upstream Face Riprap Replacement Project (Subcontractor to Newland Entities, Inc.)	Riprap Face of Dam	Mendocino County, CA	\$3,350,000	Army Corps of Engineers	Army Corps of Engineers	Frank Garrison (SMP PM)	916-761-1242
2009	A.V. Watkins Dam Modification - Cement-Bentonite Cutoff Wall, Contract No. 08-CC-40-8244 (Subcontractor to Geo-Solutions, Inc.)	<i>SB Cutoff Wall</i> <i>1 x 10.6</i> Slurry Wall	<i>1569,000sf</i> Weber County, Utah	\$17,447,305 \$224,406,811	U.S. Bureau of Reclamation	U.S. Bureau of Reclamation	Brant Demaris	801-368-3903

Section 2 - Earthwork Contractor's Project Personnel's Qualifications. Identify the individuals, including the project manager and site superintendent, who will be in responsible charge of the project. For each individual, include a list of at least three (3) reference projects on which the individual held the same position. The project manager shall have a minimum of five (5) years experience as a project manager on earthwork projects, and superintendents shall have a minimum of three (3) years experience on earthwork projects placing a minimum of 75,000 cy of compacted fill. Substitution for identified individuals will not be permitted without the prior written consent of the Agency.

Individual's Name: Calvin Barnhill

Present Position in the Organization: Project Manager

Proposed Position for Project: Project Manager

Years of Experience in Position Proposed for Project: 32

Percentage of On-Site Time Individual will spend Managing/Supervising the Work: 100%

Reference Projects:

1. Project Name: A V Watkins Dam Modification
Owner's Representative: U S Bureau of Reclamation
Owner's Contact; Name: Brant Demars Phone: 801-368-3903
Position Held by Individual: Project Manager
Project Start/End Dates: July 2008/June 2009
Construction Activity Description:
Construct C-B Slurry Cutoff Wall, Reconstruct 28,000 LF of levee slope, wall cap embankment, 30,000 CY embankment for toe drain, Total embankment 80,000 CY +
2. Project Name: Emergency Levee Erosion Fill
Owner's Representative: Department of Water Resources
Owner's Contact; Name: Rob Fill Phone: (916) 679-2215
Position Held by Individual: Project Manager
Project Start/End Dates: July 2006/June 2008
Construction Activity Description:
Levee Embankment - 120,000 tons
Rock Slope Protection - 850,000 tons
Setback levee, top soil placement, landscaping, irrigation systems

3. Project Name: South Sacramento Streams 1A
Owner's Representative: U S Army Corp of Engineers
Owner's Contact; Name: Cathy Wise Phone: (916) 373-1617
Position Held by Individual: Project Manager
Project Start/End Dates: July 2005/November 2005
Construction Activity Description:
Levee Embankment 240,000 CY
Concrete Floodwall 1,500 LF
Relief Well System 2,300 LF

4. Project Name: _____
Owner's Representative: _____
Owner's Contact; Name: _____ Phone: _____
Position Held by Individual: _____
Project Start/End Dates: _____
Construction Activity Description:

Individual's Name: Brian Bushnell
Present Position in the Organization: Superintendent
Proposed Position for Project: Superintendent
Years of Experience in Position Proposed for Project: 20
Percentage of On-Site Time Individual will spend Managing/Supervising the Work: 75%

Reference Projects:

1. Project Name: Phase 4 - Feather River Levee Repair Project
Owner's Representative: TRLIA
Owner's Contact; Name: Doug Handen Phone: (916) 425-4662
Position Held by Individual: Superintendent
Project Start/End Dates: August 2008/November 2009
Construction Activity Description:
Levee degrade, levee fills, seepage berms, levee slope flattening,
stability berms. Total levee embankment 150,000 CY +

2. Project Name: Phase 2 - Levee Repair Project, Contract #PH4-2007-08-1
Owner's Representative: HDR (for TRLIA)
Owner's Contact; Name: Blake Johnson Phone: (916) 204-6869
Position Held by Individual: Superintendent
Project Start/End Dates: 2005/2006
Construction Activity Description:
Degrade levee for slurry wall, reconstruct levee crown, seepage berms &
other levee fills. Total embankment 400,000 CY

3. Project Name: Bear River Setback Levee
Owner's Representative: GEI (for TRLIA)
Owner's Contact; Name: John Dahl Phone: (916) 717-0162
Position Held by Individual: Superintendent
Project Start/End Dates: April 2006/December 2006
Construction Activity Description:
Construct Setback Levee
800,000 CY levee embankment

4. Project Name: _____
Owner's Representative: _____
Owner's Contact; Name: _____ Phone: _____
Position Held by Individual: _____
Project Start/End Dates: _____
Construction Activity Description:

Individual's Name: Jens Karlshoej
Present Position in the Organization: COO
Proposed Position for Project: COO/Alternate Project Manager
Years of Experience in Position Proposed for Project: 20
Percentage of On-Site Time Individual will spend Managing/Supervising the Work: 20%

Reference Projects: Same as Projects listed in Section 1

1. Project Name: _____
Owner's Representative: _____
Owner's Contact; Name: _____ Phone: _____
Position Held by Individual: _____
Project Start/End Dates: _____
Construction Activity Description:

2. Project Name: _____
Owner's Representative: _____
Owner's Contact; Name: _____ Phone: _____
Position Held by Individual: _____
Project Start/End Dates: _____
Construction Activity Description:

3. Project Name: _____
Owner's Representative: _____
Owner's Contact; Name: _____ Phone: _____
Position Held by Individual: _____
Project Start/End Dates: _____
Construction Activity Description:

4. Project Name: _____
Owner's Representative: _____
Owner's Contact; Name: _____ Phone: _____
Position Held by Individual: _____
Project Start/End Dates: _____

Construction Activity Description:

4. Project Name: _____
Owner's Representative: _____
Owner's Contact; Name: _____ Phone: _____
Position Held by Individual: _____
Project Start/End Dates: _____
Construction Activity Description:

Individual's Name: Ray Bertelsen
Present Position in the Organization: Construction Manager
Proposed Position for Project: Construction Manager-Alternate Project Manager
Years of Experience in Position Proposed for Project: 30
Percentage of On-Site Time Individual will spend Managing/Supervising the Work: 25%

Reference Projects:

1. Project Name: Phase 4 - Feather River Levee Repair Project
Owner's Representative: TRLIA
Owner's Contact Name: Doug Handen Phone: (916) 425-4662
Position Held by Individual: Construction Manager
Project Start/End Dates: October 2007/November 2008
Construction Activity Description:
Levee construction including slurry cutoff walls, levee degrade and
levee embankment

2. Project Name: A V Watkins Dam Repair Project
Owner's Representative: U S Bureau of Reclamation
Owner's Contact Name: Brant Demars Phone: (801) 368-3903
Position Held by Individual: Construction Manager
Project Start/End Dates: July 2008/June 2009
Construction Activity Description:
5 miles of levee degrade, CB slurry cutoff walls, levee reconstruction

3. Project Name: South Sacramento Streams Contract 1B2
Owner's Representative: U S Army Corps of Engineers
Owner's Contact Name: Scott Mahlum Phone: (916) 373-1617
Position Held by Individual: Construction Manager
Project Start/End Dates: October 2007/June 2009

Construction Activity Description:

Section 3 - Cutoff Wall (Sub)Contractor's Qualifications. List at least three (3) projects that the cutoff wall (sub)contractor has completed since January 1, 1990. Briefly describe construction activities, emphasizing construction activities similar to those to be provided on this project, specifically including but not limited to: construction of SB slurry cutoff walls; construction of SB slurry cutoff walls with the same permeability requirements specified for this project; and experience with wet-batching SB materials and mix control. Projects qualifying for relevant experience shall have a minimum wall length of 500 feet and a minimum wall depth of 50 feet.

Project 1: Name: Phase 4 Feather River Levee Repair Project
Location: Yuba County (TRLIA)
Start Date: August 2008 Completion Date: December 2009
Wall Length: 14,000 Wall Depth: 64' Avg Wall Permeability: 5X10E-7
Owner's Representative: GEI
Owner Contact; Name: John Dahl Phone: (916) 717-0162
Construction Activity Description: _____
SB and SCB wall construction including levee degrade and reconstruction.

Performed Work as: Prime Contractor Yes Subcontractor Yes/No
Yes/No Yes/No

Project 2: Name: Freeport Regional Water Intake Facilities Project
Location: Sacramento, California
Start Date: April 2006 Completion Date: May 2006
Wall Length: 800 Wall Depth: 75 Wall Permeability: 5X10E-7
Owner's Representative: Balfour Beatty Infrastructure
Owner Contact; Name: Reg Chamberlain Phone: (916) 392-2239
Construction Activity Description: _____
SCB Cutoff wall

Performed Work as: Prime Contractor Yes/No Subcontractor No
Yes/No Yes/No

Project 3: Name: Phase 4 - Yuba River Levee Repair - Contract #PH4-2006/2007

Location: Yuba County (TRLIA)

Start Date: 2006 **Completion Date:** 2006

Wall Length: 3000 **Wall Depth:** 75' **Wall Permeability:** 5X10E-7

Owner's Representative: HDR

Owner Contact; Name: Blake Johnson **Phone:** (916) 204-6869

Construction Activity Description: _____

SCP cutoff wall including levee degrade and reconstruction

Performed Work as: Prime Contractor Yes Subcontractor
Yes/No Yes/No

Project 4: Name: _____

Location: _____

Start Date: _____ **Completion Date:** _____

Wall Length: _____ **Wall Depth:** _____ **Wall Permeability:** _____

Owner's Representative: _____

Owner Contact; Name: _____ **Phone:** _____

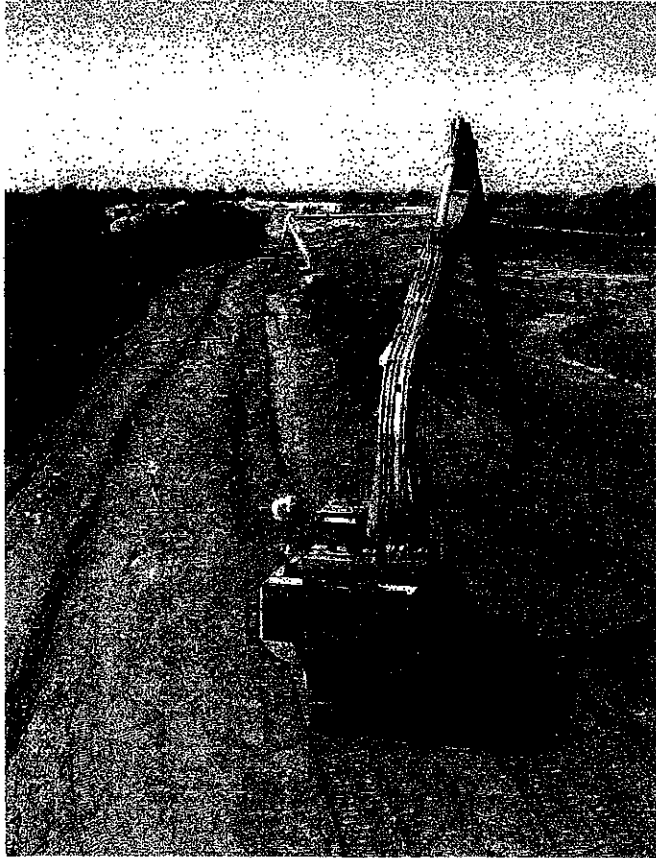
Construction Activity Description: _____

Performed Work as: Prime Contractor _____ Subcontractor
Yes/No Yes/No

PROJECT EXPERIENCE

Marysville CA SCB Wall

Contractors: Nordic (Prime)



Working with a long stick attachment on a narrow dike crest

Yuba River Levee Repair Project – Phase 4, Yuba County, CA
Contract No. PH4 – 2006/07

Owner/Customer: Three Rivers Levee Improvement Authority

Type of Cutoff Walls: Soil-Cement-Bentonite.

Depth of Cutoff Walls: 75'

Length of Cutoff Walls (3000')

Total Area of Cutoff Walls: (225,000 sf)

Date of Contract: August 24, 2006

Original duration of Project: August 24, 2006 to December 1, 2006

Original/Actual duration of Project: August 31, 2006 to April 30, 2007 (time extension granted for changed work)

Initial and Final Contract Amounts: \$12,915,630 / \$12,984,471

Association with Agency: Prime Contractor

Problems encountered: No unusual problems were encountered.

Owner's Representatives:

Doug Handen, TRLIA Construction Manager. (916) 425-4662

Feather River CA SCB Wall

Contractors: Nordic (Prime)



Excavating the slurry wall on the dike crest

Phase 4, Feather River Levee Project. Yuba County, CA
Contract No. PH4 - 2007/08-01

Date of Contract: July 23, 2007

Owner/Customer: Three Rivers Levee Improvement Authority

Type of Cutoff Walls: Soil-Cement-Bentonite.

Depth of Cutoff Walls: 70' maximum

Length of Cutoff Walls: 2,900 lf.

Total Area of Cutoff Walls: 164,000 sf

Original duration of Project: August 15, 2007 to November 15, 2007

Actual duration of Project: August 15, 2007 to November 15, 2008

Initial and Final Contract Amounts: \$14,284,308 / \$17,324,129

Association with Agency: Prime Contractor

Problems encountered: No unusual problems were encountered.

Owner's Representatives:

Doug Handen, TRLIA Construction Manager. (916) 425-4662

Alberto Pujol, Engineer, GEI Consultants (510) 350-2908



Slurry Pond and Grout mixing area at dike toe. Feather River SCB Wall

Phase I - Yuba River Levee Repair Project
Contractors: Nordic (Prime)

Owner/Customer: Three Rivers Levee Improvement Authority

Contract No. 201064-15115-141

Date of Contract: August 1, 2004

Type of Cutoff Walls: Soil-Cement-Bentonite.

Depth of Cutoff Walls: 45'

Length of Cutoff Walls: 2,200 lf.

Original duration of Project: September 1, 2004 to November 1, 2004

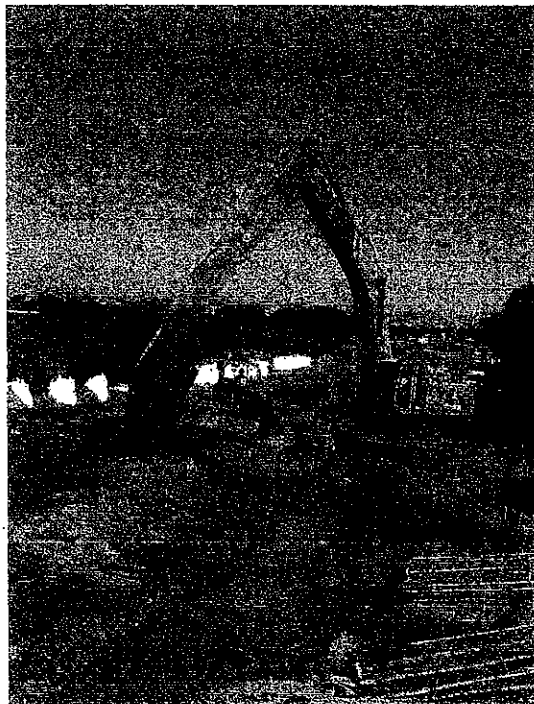
Actual duration of Project: September 1, 2004 to November 1, 2004

Initial and Final Contract Amounts: \$1,745,500

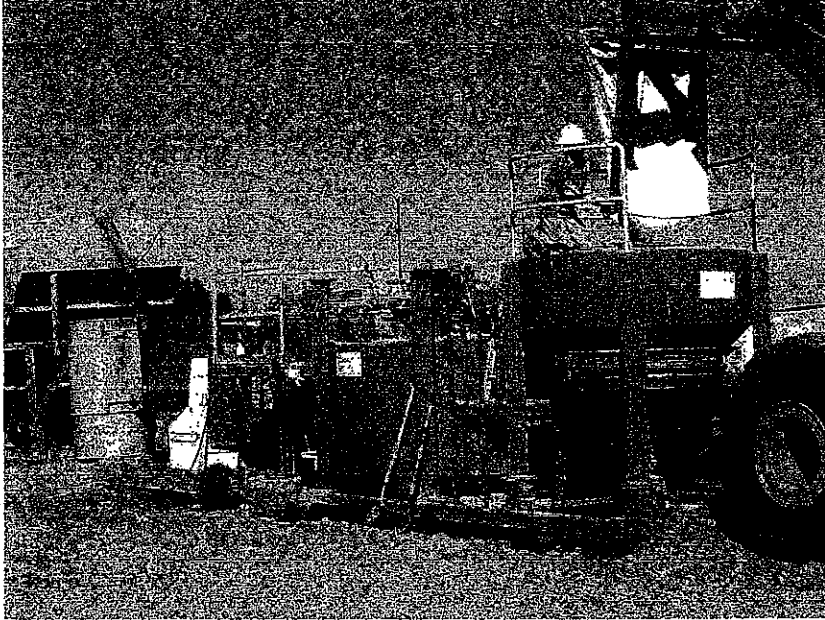
Association with Agency: Prime Contractor

Problems encountered: None.

Owner's Representatives: Chris Krivanec, HDR Engineering, (916) 817-4842



Digging on the Yuba River Project



Using the Geo-Solutions Automated B/W-CB Plant at Yuba River

Freeport Regional Water Authority Intake Facilities Project, Sacramento County, CA

Contractors: Nordic (Prime)

Owner/Customer: Balfour Beatty Infrastructure, Inc.

Contract No.: Not Used

Date of Contract: April 12, 2007

Type of Cutoff Walls: Soil-Cement-Bentonite.

Depth of Cutoff Walls: 75'

Length of Cutoff Walls: 800 lf.

Total Area of Cutoff Walls: 60,000 sf

Original/Actual duration of Project: 1 month / April 18, 2007 to May 7, 2007

Initial and Final Contract Amounts: \$992,000 / \$992,000

Association with Customer: Subcontractor

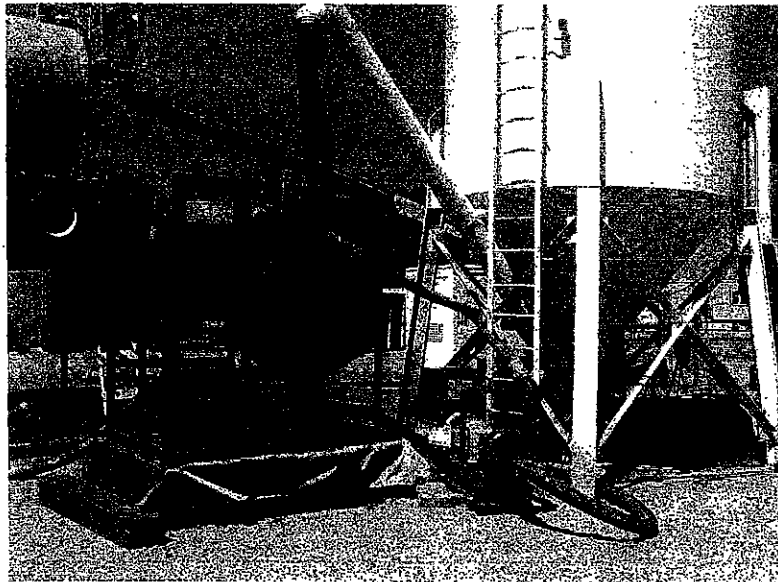
Problems encountered: None

Customer's Representatives:

Reg Chamberlain, Project Manager. (916) 392-2239



PC 1250 used at Freeport project



Grout mixing Plant used in Freeport

Section 4 - Cutoff Wall (Sub)Contractor's Personnel's Qualifications. Identify the individuals, including the project manager and site superintendent, who will be in responsible charge of the cutoff wall construction on the project. For each individual, include a list of at least three (3) reference projects on which the individual held the same position. The project manager shall have a minimum of five (5) years experience on cutoff wall projects, and superintendents shall have a minimum of three (3) years experience on cutoff wall projects. Substitution for identified individuals will not be permitted without the prior written consent of the Agency.

Individual's Name: Jens Karlshoej
Present Position in the Organization: COO
Proposed Position for Project: COO/ Project Manager
Years of Experience in Position Proposed for Project: 5
Percentage of On-Site Time Individual will spend Managing/Supervising the Work: 20%

Reference Projects:

1. **Project Name:** Phase 4 - Feather River Levee Repair Project
Owner's Representative: Yuba County (TRLIA)
Owner's Contact; Name: Doug Handen **Phone:** (916)425-4662
Position Held by Individual: COO/Project Manager
Project Start/End Dates: August 2008/December 2009
Construction Activity Description:
SB and SCB wall construction including levee degrade and reconstruction.

2. **Project Name:** A V Watkins Dam Repair Project
Owner's Representative: U S Bureau of Reclamation
Owner's Contact; Name: Brant Demars **Phone:** (801) 368-3903
Position Held by Individual: COO/Project Manager
Project Start/End Dates: July 2008/June 2009
Construction Activity Description:
Construct CB cutoff wall including levee degrade and reconstruction.

3. **Project Name:** Phase 4 - Yuba River Levee Repair - Contract #PH4-2006/2007

Owner's Representative: HDR (for TRLIA)
Owner's Contact; Name: Blake Johnson Phone: (916) 204-6869
Position Held by Individual: COO/Project Manager
Project Start/End Dates: 2006/2006
Construction Activity Description: SCB cutoff wall including levee degrade and reconstruction

4. Project Name: _____
Owner's Representative: _____
Owner's Contact; Name: _____ Phone: _____
Position Held by Individual: _____
Project Start/End Dates: _____
Construction Activity Description: _____

Individual's Name: Gary Brandon
Present Position in the Organization: Superintendent
Proposed Position for Project: Superintendent
Years of Experience in Position Proposed for Project: 28
Percentage of On-Site Time Individual will spend Managing/Supervising the Work: 50%

Reference Projects:

1. Project Name: A V Watkins Dam Modification
Owner's Representative: U S Bureau of Reclamation
Owner's Contact; Name: Brant Demars Phone: _____
Position Held by Individual: Superintendent
Project Start/End Dates: July 2008/June 2009
Construction Activity Description: 1,500,000+ SF CB Slurry wall

2. Project Name: Phase 4 - Feather River Levee Repair Project

Owner's Representative: TRLIA
Owner's Contact; Name: Doug Handen Phone: (916) 425-4662
Position Held by Individual: Superintendent
Project Start/End Dates: 2006
Construction Activity Description:
SB and SCB slurry cutoff walls
Total 464,000 SF

3. Project Name: Phase 4 - Yuba River Levee Repair
Owner's Representative: HDR (for TRLIA)
Owner's Contact; Name: Blake Johnson Phone: (916) 204-6869
Position Held by Individual: Superintendent
Project Start/End Dates: 2006
Construction Activity Description:
SCB cutoff wall
507,000 SF

4. Project Name: _____
Owner's Representative: _____
Owner's Contact; Name: _____ Phone: _____
Position Held by Individual: _____
Project Start/End Dates: _____
Construction Activity Description:

Individual's Name: Bruce George
Present Position in the Organization: Superintendent/Slurry Wall Specialist
Proposed Position for Project: Superintendent/Slurry Wall Specialist
Years of Experience in Position Proposed for Project: 25
Percentage of On-Site Time Individual will spend Managing/Supervising the Work: 50%

Reference Projects: See Attached Resume

1. Project Name: _____
Owner's Representative: _____
Owner's Contact; Name: _____ Phone: _____
Position Held by Individual: _____
Project Start/End Dates: _____
Construction Activity Description: _____

2. Project Name: _____
Owner's Representative: _____
Owner's Contact; Name: _____ Phone: _____
Position Held by Individual: _____
Project Start/End Dates: _____
Construction Activity Description: _____

3. Project Name: _____
Owner's Representative: _____
Owner's Contact; Name: _____ Phone: _____
Position Held by Individual: _____
Project Start/End Dates: _____
Construction Activity Description: _____

Staff Resume

Bruce W. George
Slurry Specialist/Quality Control Technician

INTRODUCTION

Mr. George has had a long career in field operations, quality control, construction management and health and safety. For the last seventeen years, he has had significant involvement in slurry wall, bio-polymer drain, and in-situ soil mixing construction.

CREDENTIALS

Education

B.S. Business Administration-Bowling Green State University	1973
First Aid - Instructors Course - American Red Cross	1984
40-Hour Hazardous Materials Certification	1990
8-Hour Hazardous Materials Supervisor Course	1990
8-Hour Hazardous Materials Refresher Course	Yearly
Radiological Worker II Training-Department of Energy	1993, 2000

Experience Synopsis

Mr. George has in excess of 25 years experience in industrial construction, including project and field supervision, quality control and safety aspects of specialty environmental and geo-technical construction. His background includes multiple projects in each of the following areas:

- Slurry cut-off walls (SB and SCB)
- Vertical HDPE Liners
- Deep soil mixing
- Jet Grouting
- Bio-Polymer Slurry Trench Drains
- Permeable Reactive Barriers

His role has varied from quality control supervisor to on-site project manager. Mr. George has been approved by the Army Corp of Engineers as a Slurry Trench Specialist. He previously had worked for the firm of Geo-Con. He is computer-literate and produces all field reports on a personal computer.

PROJECT EXPERIENCE (Selected Examples)

Slurry Walls and Bio-Polymer Drains

Suncor Oil Sands, Ft. Mc Murry, Alberta, Canada (2007)

Slurry trench supervisor for the construction of a soil-bentonite slurry wall. The slurry wall was 1000 m long and up to 38 meters deep.

Freeport Water District, Freeport, CA (2007)

Slurry trench supervisor for the construction of a soil-bentonite slurry wall. The slurry wall was 1,000 feet long and up to 80 feet deep.

Private Client, Renton, WA (2007)

Slurry trench supervisor for the construction of a passive-reaction barrier-wall. The slurry wall was up to 35 feet wide with various depths to 30 feet deep.

Palm Beach Aggregates, Loxatchee, FL (2005-2006)

Slurry trench supervisor for the construction of a soil-bentonite slurry wall. The slurry wall was 10,500 feet long and up to 75 feet deep.

Mayfield Closure Area, New South Wales, Australia (2006)-Regional Lands Management Corp.-

Slurry trench supervisor for the construction of a soil-bentonite slurry wall. The slurry wall was 1500 meters long and up to 48 meters deep.

Piute Dam, Richfield, UT (2004) – Piute Reservoir and Irrigation Company

Slurry trench specialist for the construction of a bio-polymer slurry drainage trench at the toe of a rural irrigation dam system. The installation included a HDPE vertical liner with filter fabric backing and 10 inch HDPE collection pipe with cleanouts, all installed under slurry. The trench was 575 ft long, 30 ft deep and 3 ft wide

Marysville, CA Emergency Levee Repair (2004) - Yuba county Levee District

Slurry trench specialist for the construction of a soil-cement-bentonite slurry wall. The slurry wall was 2600 feet long and up to 45 ft deep

Tempe Landfill, Sydney, Australia (2004) – Sanitary Waste Authority

Slurry trench specialist for the construction of a soil-bentonite slurry wall near the international airport. The slurry wall was 16 m deep and 1400 m long. A full-scale test trench was completed as a part of the project design.

Former MGP Site, Sunbury, PA (2003) – PP&L

Slurry trench specialist for the construction of a bio-polymer slurry drainage trench. The installed included a HDPE collection pipe with cleanouts installed under slurry. The trench was 265 ft long, 12 ft deep and 3 ft wide

25th Avenue SCB Slurry Wall, Greeley, CO (2002) - City of Greeley

Slurry trench specialist for the construction of a soil-cement-bentonite slurry wall keyed 3 ft into hard rock. The slurry wall was nearly 2 miles long and up to 65 ft deep. Special drilling methods were used to key into the rock.

Area A, Stennis Space Center, MS (2002) – NASA

Slurry trench specialist for the construction of a large permeable treatment wall. The wall consists of 5 soil-bentonite slurry walls and 3 bio-polymer trench drains backfilled with iron/sand. Maximum depth was 55 ft.

PEC Site, North Vancouver, BC (2001) – Confidential

Slurry specialist and quality control technician for the construction of a very large permeable reactive barrier wall constructed by the bio-polymer slurry method. The barrier consisted of 5 sections 6.5 to 8 ft wide and up to 60 ft deep.

April 2008

Skinner Landfill, Cincinnati, OH (2001) - Superfund

Slurry specialist for the installation of a soil-bentonite slurry wall and bio-polymer trench drain. The slurry wall was 20,000 sf up to 30 ft deep. The bio-polymer drain was 15,000 sf and included a filter fabric envelope.

LD1 Slurry Wall, Yuba City, CA (2000) - Army Corps of Engineers

Night shift Slurry Trench Specialist and QC Supervisor for the construction of a soil-cement-bentonite slurry wall. The slurry wall was up to 60 ft deep and nearly two miles long.

Manchester Superfund Site, Kitsap County, WA (2000) - US EPA

Slurry specialist and QC duties for a soil-bentonite slurry wall. Slurry wall was up to 30 ft deep and 1400 ft long.

Marysville, CA (2000) - Army Corps of Engineers

QC manager and assistant slurry wall specialist for soil-bentonite slurry wall. Slurry wall was up to 45 ft deep and 4300 ft long.

Marysville, CA (1998) - Army Corps of Engineers

Served as on-site QC Manager and Assistant Superintendent and slurry specialist for this 700,000 sf, 72 ft deep soil-bentonite slurry wall constructed as a seepage barrier under an existing flood control levee.

Insitu Soil Mixing

Cresant-Ridge Wind Farm- Tower Stabilization- Princeton, Illinois (2005)

Served as an on-site supervisor and technician for the stabilization of wind-farm tower structures utilizing shallow soil mixing techniques. Supervised and trained grout-plant personnel, as well as operated crane and man-lifts in support of SSM operations.

West Memphis, AR (2000) - Superfund/US EPA

Served as on-site supervisor and technician for the stabilization of 40,000 cy of acid-petroleum contaminated soil and sludge up to 25 ft deep. Mixing methods employed included crane with 8 ft diameter auger/mixer and backhoe mixing. Pretreatment of some of the soil and sludge was performed with lime neutralization, followed by cementitious stabilization.

Sacramento, CA (1995) - City of Sacramento

Served as construction supervisor for the installation of a 40,000 sf soil-cement-bentonite groundwater barrier up to 60 ft deep using deep soil mixing. Mixing method employed crane mounted 4-auger/mixer rig and cement-bentonite grout.

Piketon, OH (1994) - US DoE

Served as safety officer for treatment of TCE contaminated soil using heated air and auger mixing. Over 25,000 cy treated with mixing and SVE. First full scale use of this technology at a DoE facility.

Whiting, IN (1993) - AMOCO

Served as safety officer and quality control technician for stabilization of over 100,000 cy of petroleum sludge up to 25 ft deep. Mixing methods employed included crane mounted 12 ft diameter auger/mixer and backhoe mixing using dry cement.

General Electric, Hialeah, FL (1991)

Served as safety officer and quality control technician for stabilization of over 120,000 cy of PCB contaminated soils up to 65 ft deep. Mixing methods employed included crane mounted 4-auger/mixer rig and cement-bentonite grout.

4. Project Name: _____
Owner's Representative: _____
Owner's Contact; Name: _____ Phone: _____
Position Held by Individual: _____
Project Start/End Dates: _____
Construction Activity Description: _____

Individual's Name: Keith Kilpatrick
Present Position in the Organization: Superintendent/Slurry Wall Specialist
Proposed Position for Project: Superintendent/Slurry Wall Specialist
Years of Experience in Position Proposed for Project: 20
Percentage of On-Site Time Individual will spend Managing/Supervising the Work: 50%

Reference Projects: See Attached Resume

1. Project Name: _____
Owner's Representative: _____
Owner's Contact; Name: _____ Phone: _____
Position Held by Individual: _____
Project Start/End Dates: _____
Construction Activity Description: _____

2. Project Name: _____
Owner's Representative: _____
Owner's Contact; Name: _____ Phone: _____
Position Held by Individual: _____
Project Start/End Dates: _____
Construction Activity Description: _____

3. Project Name: _____
Owner's Representative: _____
Owner's Contact; Name: _____ Phone: _____
Position Held by Individual: _____
Project Start/End Dates: _____
Construction Activity Description: _____

4. Project Name: _____
Owner's Representative: _____
Owner's Contact; Name: _____ Phone: _____
Position Held by Individual: _____
Project Start/End Dates: _____
Construction Activity Description: _____

Staff Resume

R. Keith Kilpatrick

INTRODUCTION

Mr. Kilpatrick has had a long career in construction, management and quality control. For the last twenty years, he has worked in the construction field, with the last ten years being involved in slurry wall construction. He has worked for specialty contractors where he served as field manager and operator for slurry wall and soil mixing projects.

CREDENTIALS

Education

Mississippi Gulf Coast Junior College
Hazwoper Course 40 hours plus annual updates

1976-1978

Experience Synopsis

Mr. Kilpatrick has in excess of 20 years experience in construction management and site operations. A significant portion of his experience has related to specialty environmental and geotechnical construction. His background includes multiple projects in each of the following areas:

Slurry cut-off walls
Reactive Barrier Walls

Bio-polymer slurry trench drains
In situ Soil Mixing

His initial work with in the specialty construction industry began as an operator and progressed to on-site foreman, then project manager, and now as Slurry Specialist. He previously has worked for the firms of Geo-Con, DD-M and ECC in the specialty construction field. He is computer-literate and produces field reports on a personal computer.

PROJECT EXPERIENCE (Selected Examples)

Riverview, MI (2007) – Supervisor for the construction of a 13,000 cy soil-cement-bentonite barrier. The barrier was installed in the Detroit River as part of a composite sheet pile and soil-cement-bentonite barrier wall. The SCB material was remote mixed, hauled to the river's edge, and placed on the land side of the sheet pile wall with a crane. The performance criteria of the SCB included permeability and unconfined compressive strength.

Brisbane Australia (2007)—On site supervisor and slurry specialist for 2000 ft long, 50 ft deep slurry wall with embedded plastic panels. The wall was to create a barrier against water and air inflow into a site during a vacuum consolidation program.

Marvsville CA (2006)—On site supervisor and slurry specialist for approximately 300,000 sf of 70 ft deep SCB slurry wall. This wall was installed through a degraded levee to improve its foundation to stop underseepage during flood events.

Nvack, NY (2006) - Former MGP Site - On-Site Supervisor and SSM operator on this site where SSM was used to stabilize 2,500 cy of impacted soil. Both 5 and 8 foot diameter columns were installed to bedrock at depths ranging from 10 to 20 feet below ground surface. Treatment criteria included UCS and permeability.

Tiskitwa, IL (2005) - On-Site Supervisor and SSM operator on this project where in-situ stabilization was used to improve the strength of the backfill soil that was placed around 20 newly installed wind turbines. After the turbines were initially installed, unacceptable movement occurred at one of the turbines. Further investigation determined that the backfill material around 20 turbine foundations was unacceptable. The most cost effective means of remediating the backfill was to utilize soil mixing. A cement grout was mixed with the existing backfill soil, with cured unconfined compressive strengths greater than 250 psi. Soil mix depths ranged from 15 to 29 feet below ground surface.

Lynn, MA (2005) - On-Site Supervisor for the construction of this 4,500 sf cement-bentonite slurry wall. The project was constructed under extremely tight space constraints. The wall was 250 feet long and up to 20 feet deep.

L-8 Canal Seepage Barrier, West Palm Beach County, FL (2004)

Slurry specialist for the construction of a soil-bentonite slurry wall of 270,000 sf up to 35 ft deep. Hard rock excavation and the remote location in sugar cane fields were special features of this project. Owner: South Florida Water Management District.

Building 360 PRB, Kelly USA, TX (2003)

QC specialist for the construction of the largest PRB constructed to date. The bio-polymer slurry trench installation of zero-valent iron was 900 ft long, up to 32 ft deep, and up to 10 ft wide. Construction was in urban area with numerous underground utilities. Owner: USAF

Cherokee NW Dam, Denver, CO (2003)

Slurry wall specialist for the construction of a soil-bentonite slurry wall 2400 ft long and up to 32 ft deep. Slurry wall serves as a foundation cutoff wall beneath new earthen dike. Owner: Excel Energy Corporation

FGD Pond # 2 Expansion, Point of Rocks, WY (2002-3)

Slurry wall specialist for the construction of a soil-cement-bentonite slurry wall 10,000 ft long and up to 27 ft deep. Slurry wall serves as a foundation cutoff wall beneath new earthen dike. Parts of slurry wall were constructed up to 10 ft below water level of adjoining dam by means of dewatering trench and special procedures. Owner: Pacific Power Corporation

25th Avenue SCB Slurry Wall, Greeley, CO (2002)

Slurry wall specialist for the construction of a soil-cement-bentonite slurry wall 8600 ft long and up to 70 ft deep. Slurry wall impounds a former sand and gravel pit that is being converted into a water reservoir for the City of Greeley.

Stennis Space Center, MS - NASA (2001-2002)

On site lead operator and foreman for the installation of five soil-bentonite slurry walls and three bio-polymer trench drains that form a funnel and gate system to treat agent orange, PCB, and TCE contaminated groundwater. The trenches were over 2000 lf and up to 50 ft deep. Project is phase 2 of a site closure for NASA.

Yuba City, CA - USACE (2001)

On-site supervision for the construction of a soil-bentonite slurry wall up to 65 ft deep and over mile long for a flood protection dike. Project was designed and managed by the Army Corp of Engineers.

Sacramento, CA - USACE (2000)

Project Manager with subcontractor to Inquip. Responsible for seven miles of levee restoration after completion of SCB slurry wall. Project was designed and managed by the Army Corp of Engineers.

Corpus Christi, TX - TECO (2000)

Served as operator, foreman, and slurry trench specialist for the construction of soil-bentonite slurry wall around hazardous waste landfill. Slurry wall was over 60 ft deep and one mile long.

Dumas, AR - USACE (1999)

Operator, foreman, and slurry trench specialist for one soil-bentonite slurry wall and three cement-bentonite slurry walls for the White River lock and dam. Project was constructed as a part of the lock and dam for navigation on the Arkansas River.

Section 5 - Contractor's General References. Identify a minimum of three (3) general references including contact names and phone numbers of each reference. References should not be suppliers and should not be subcontractors identified in Attachment A or Attachment B or any other member of the Bidder's team.

A. Name: Brant Demars
Agency/Organization: U S Bureau of Reclamation
Relationship to Bidder: None - Owners Representative
Address: 302 East 1860 South, Provo, UT 84606
Phone Number: (801) 368-3903

B. Name: Doug Handen
Agency/Organization: Handen Company
Relationship to Bidder: None - Owner's Representative
Address: 3520 Monier Circle, Suite D, Rancho Cordova, CA 95742
Phone Number: (916) 425-4662

C. Name: Blake Johnson
Agency/Organization: HDR
Relationship to Bidder: None - Owner's Representative
Address: Sacramento, CA
Phone Number: (916) 204-6869

D. Name: Grant Kreinberg
Agency/Organization: Water Resource Consultants
Relationship to Bidder: None - Owner's Representative
Address: 1007 7th Street, Sacramento, CA
Phone Number: (916) 874-8736

E. Name: Rob Fill (rfill@water.ca.gov)
Agency/Organization: Department of Water Resources
Relationship to Bidder: None - Owner's Representative
Address: 1416 9th Street, Sacramento, CA
Phone Number: (916) 653-5791

Proposal for:
SAFCA SREL REACH 2, 3 AND 4A

Bid Date: 3/12/2009
 Time: 2:00PM

From
 NORDIC INDUSTRIES, INC
 1437 Furneaux Road Marysville, CA 95901

(530) 742-7124

Fax:

SAFCA

Bid-Item	Description	Quantity	Unit	Unit Price	Total Price
A	SREL PHASE 1B REACHES 2-4A (PLAN VOLUME 2A)				
A01	MOB AND DEMOB	1.00	LS	400,000.0000	400,000.00
A02	SWPP CONTROL	1.00	LS	75,000.0000	75,000.00
A03	TEMP PROTECTIVE FENCING	2,600.00	LF	1.0000	2,600.00
A04	CLEAR AND GRUB	53.20	ACRE	500.0000	26,600.00
A05	STRIPPING	53.20	ACRE	1,500.0000	79,800.00
A06	MOWING AND DISCING	4.10	ACRE	2,250.0000	9,225.00
A07	DEMOLITION	1.00	LS	14,000.0000	14,000.00
A08	EXC STABILITY BERM	72,400.00	BCY	6.0000	434,400.00
A09	FOUNDATION AND MISC EXC	35,100.00	BCY	2.0000	70,200.00
A10	RANDOM FILL	168,700.00	ECY	2.0000	337,400.00
A11	LEVEE EMBANKMENT	859,800.00	ECY	2.5000	2,149,500.00
A12	SOIL BENTONITE CUTOFF WALL	677,100.00	SF	6.0000	4,062,600.00
A13	EROSION CONTROL SEEDING	56.20	ACRE	1,600.0000	89,920.00
A14	CL 2 AGG BASE	19,900.00	TON	17.5000	348,250.00
A15	UNSUITABLE DEBRIS	4,000.00	CY	6.0000	24,000.00
A16	CONSTRUCT INTERIM TERMINATION	1.00	LS	7,500.0000	7,500.00
A17	REMOVE INTERIM TERMINATION	2.00	EA	2,500.0000	5,000.00
				Total:	8,135,995.00
B	ROADWAYS AND ROADWAY DRAINAGE (PLAN VOLUME 2A)				
B01	MOB AND DEMOB	1.00	LS	22,500.0000	22,500.00
B02	TEMP TRAFFIC CONTROL SYSTEM	1.00	LS	125,000.0000	125,000.00
B04	DRAIN INLET TY F W/ GRATE	9.00	EA	2,000.0000	18,000.00
B05	24" RCP	612.00	LF	75.0000	45,900.00
B06	RSP TYPE 1, NO. 3	140.00	TON	35.0000	4,900.00
B07	RSP TYPE 2, FACING	900.00	TON	35.0000	31,500.00
B08	COBBLESTONE	20.00	TON	40.0000	800.00
B09	BEDDING MATERIAL	185.00	TON	35.0000	6,475.00
B10	SAWCUTTING	400.00	LF	5.0000	2,000.00
B11	LIME MODIFIED SOIL	910.00	CY	20.0000	18,200.00
B12	CL 2 AGG BASE	1,530.00	TON	17.5000	26,775.00

√ = Locked Bid-Item

I = Zero Total Price

Run by: Calvin Barnhill Estimator: Dave Culbertson

For Job: SAFCA SREL REACH 2, 3 AND 4A



Proposal for:
SAFCA SREL REACH 2, 3 AND 4A

Bid Date: 3/12/2009
 Time: 2:00PM

From
 NORDIC INDUSTRIES, INC
 1437 Furneaux Road Marysville, CA 95901

(530) 742-7124

Fax:

SAFCA

Bid-Item	Description	Quantity	Unit	Unit Price	Total Price
B13	RELOCATE ROADSIDE SIGN	5.00	EA	150.0000	750.00
B14	RMVL AC SURFACING	2,730.00	SY	3.5000	9,555.00
B15	RMVL PCC SURFACING	1,100.00	SY	4.0000	4,400.00
B16	ROADWAY EXC	1,900.00	BCY	5.0000	9,500.00
B17	ASPH CONCR PAVING (TY A)	1,400.00	TON	75.0000	105,000.00
B18	ROADSIDE SIGN 1 POST	2.00	EA	250.0000	500.00
B19	4" YELLOW THERM STRIPE	4,528.00	LF	1.0000	4,528.00
B20	4" WHITE THERMO STRIPE	2,067.00	LF	1.0000	2,067.00
B21	12" WHITE THERMO STRIPE	29.00	LF	5.0000	145.00
B22	THERMO PVMT MARKING	67.00	SF	5.0000	335.00
B23	PAVEMENT MARKER	190.00	EA	4.0000	760.00
B24	PIPE GATE	12.00	EA	2,750.0000	33,000.00
Total:					472,590.00

C PRIVATE IRRIGATION FACILITY RELOCATION (VOLUME 1, 4, 5B)

C01	MOB AND DEMOB	1.00	LS	25,000.0000	25,000.00
C02	TEMP PROTECTIVE FENCE	542.00	LF	1.0000	542.00
C03	DEMOLITION	1.00	LS	60,000.0000	60,000.00
C04	10" GATE VALVE IN BOX	2.00	EA	1,750.0000	3,500.00
C05	3" SIPHON/AIR VALVE IN VAULT	2.00	EA	4,500.0000	9,000.00
C06	30 HP VERT TURBINE WELL PUMP	1.00	EA	80,000.0000	80,000.00
C07	15" PERF DRAIN LINE	5,766.00	LF	37.5000	216,225.00
C08	10" WELDED STL PIPE	250.00	LF	200.0000	50,000.00
C09	14" WELDED STL PIPE	312.00	LF	300.0000	93,600.00
C10	BOLLARDS	4.00	EA	225.0000	900.00
C11	WELL MOB/DEMOB	1.00	LS	53,000.0000	53,000.00
C12	TEST BORING	350.00	LF	50.0000	17,500.00
C13	BOREHOLE DRILLING (26-INCH)	50.00	VF	350.0000	17,500.00
C14	30-INCH CONDUCTOR CASING	50.00	VF	200.0000	10,000.00
C15	26-INCH BOREHOLE DRILLING	300.00	VF	100.0000	30,000.00
C16	16-INCH WELL CASING	80.00	VF	125.0000	10,000.00
C17	BLANK CASING	110.00	LF	125.0000	13,750.00
C18	WIRE WRAPPED WELL SCREEN	100.00	LF	225.0000	22,500.00

√ = Locked Bid-Item

! = Zero Total Price

Run by: Calvin Barnhill Estimator: Dave Culbertson

For Job: SAFCA SREL REACH 2, 3 AND 4A



Generated by a SharpeSoft Product

Bid Date: 3/12/2009
Time: 2:00PM

Proposal for:
SAFCA SREL REACH 2, 3 AND 4A
From
NORDIC INDUSTRIES, INC
1437 Furneaux Road Marysville, CA 95901

(530) 742-7124

Fax:

SAFCA

Bid-Item	Description	Quantity	Unit	Unit Price	Total Price
C19	FILTER PACK	250.00	LF	50.0000	12,500.00
C20	SANITARY SEAL	50.00	LF	100.0000	5,000.00
C21	WELL DEVELOPMENT AND TESTING	1.00	LS	20,000.0000	20,000.00
C22	WATER QUALITY TESTING	1.00	LS	5,000.0000	5,000.00
C23	DISINFECTION	1.00	LS	1,000.0000	1,000.00
C24	SITE CLEANUP	1.00	LS	2,500.0000	2,500.00
Total:					759,017.00
D NORTH AIRPORT BORROW SITES 1-4 (PLAN VOLUME 2C)					
D01	MOB AND DEMOB	1.00	LS	400,000.0000	400,000.00
D02	SILT FENCE	30,500.00	LF	1.0000	30,500.00
D03	SURFACE LAYER RMVL, STKPL AND RESPREAD	480.00	ACRE	2,500.0000	1,200,000.00
D04	TEMP PROTECTIVE FENCING	6,250.00	LF	1.0000	6,250.00
D05	BORROW SITE EXC	2300,000.00	BCY	3.0500	7,015,000.00
D06	RSP TYPE 2	1,400.00	TON	35.0000	49,000.00
D07	18" RCP	2,000.00	LF	27.0000	54,000.00
D08	24" RCP	270.00	LF	36.0000	9,720.00
D09	36" RCP	60.00	LF	54.0000	3,240.00
D10	48" RCP	80.00	LF	96.0000	7,680.00
D11	PRECAST CONCR INLET	15.00	EA	1,750.0000	26,250.00
D12	PIPE GATE	3.00	EA	2,750.0000	8,250.00
D13	CONCRETE HEADWALL	13.00	CY	600.0000	7,800.00
D14	CANAL EMBANKMENT	16,500.00	CY	1.5000	24,750.00
D15	48" SLIDE GATE	1.00	EA	7,500.0000	7,500.00
D16	IRRIGATION TURNOUTS	3.00	EA	12,500.0000	37,500.00
Total:					8,887,440.00
E ELKHORN AND GGS/DRAINAGE CANAL FROM 4B TO 6A (PLAN VOLUME 3A)					
E01	MOB AND DEMOB	1.00	LS	230,000.0000	230,000.00
E02	SWPPP	1.00	LS	7,500.0000	7,500.00
E03	DEMOLITION	1.00	LS	41,500.0000	41,500.00
E04	DEWATERING	1.00	LS	10,000.0000	10,000.00

√ = Locked Bid-Item

! = Zero Total Price

Run by: Calvin Barnhill Estimator: Dave Culbertson

For Job: SAFCA SREL REACH 2, 3 AND 4A



Generated by a SharpeSoft Product

Bid Date: 3/12/2009
Time: 2:00PM

Proposal for:
SAFCA SREL REACH 2, 3 AND 4A
From
NORDIC INDUSTRIES, INC
1437 Furneaux Road Marysville, CA 95901

(530) 742-7124

Fax:

SAFCA

Bid-Item	Description	Quantity	Unit	Unit Price	Total Price
E05	SILT FENCING	13,420.00	LF	1.0000	13,420.00
E06	TEMP PROTECTIVE FENCING	2,130.00	LF	1.0000	2,130.00
E07	CLEAR AND GRUB	73.00	AC	1,000.0000	73,000.00
E08	STRIPPING	73.00	AC	750.0000	54,750.00
E09	EXCAVATION	72,000.00	BCY	2.2500	162,000.00
E10	CANAL EMBANKMENT	278,700.00	ECY	3.5000	975,450.00
E11	RANDOM FILL	65,500.00	CY	2.5000	163,750.00
E12	COMPACTED EARTH LINING	3,000.00	CY	7.5000	22,500.00
E14	CL 2 AGG BASE	11,645.00	TON	18.0000	209,610.00
E15	ASPH CONCRETE	100.00	TON	120.0000	12,000.00
E16	SAW CUTTING	50.00	LF	5.0000	250.00
E18	RSP- TYPE 2	1,700.00	TON	35.0000	59,500.00
E19	RSP- TYPE 4	695.00	TON	35.0000	24,325.00
E20	CIP CONCRETE	44.00	CY	500.0000	22,000.00
E21	12" RCP	88.00	LF	24.0000	2,112.00
E22	36" RCP	430.00	LF	90.0000	38,700.00
E23	48" RCP	1,655.00	LF	96.0000	158,880.00
E24	54"RCP	60.00	LF	108.0000	6,480.00
E25	24" HDPE	235.00	LF	48.0000	11,280.00
E26	30" HDPE	460.00	LF	175.0000	80,500.00
E27	36" HDPE	600.00	LF	225.0000	135,000.00
E28	30" WSP	600.00	LF	175.0000	105,000.00
E29	36" WSP	1,325.00	LF	275.0000	364,375.00
E30	48" CANAL GATE	2.00	EA	7,500.0000	15,000.00
E31	30" BUTTERFLY VALVE	1.00	EA	12,500.0000	12,500.00
E32	36" BUTTERFLY VALVE	2.00	EA	15,000.0000	30,000.00
E33	CONCRETE ARCH CULVERT	755.00	LF	800.0000	604,000.00
E34	IRRIGATION TURN OUT	14.00	EA	15,000.0000	210,000.00
E35	PRECAST TWIN TRACK WEIR	3.00	EA	3,000.0000	9,000.00
E36	PRICHARD DISTRIBUTION BOX	1.00	LS	50,000.0000	50,000.00
E37	ELKHORN DISTRIBUTION BOX	1.00	LS	37,500.0000	37,500.00
E38	FLUME CONNECTION	1.00	LS	150,000.0000	150,000.00
E39	GGs CHECK STRUCTURE	6.00	EA	12,500.0000	75,000.00

√ = Locked Bid-Item

! = Zero Total Price

Run by: Calvin Barnhill Estimator: Dave Culbertson

For Job: SAFCA SREL REACH 2, 3 AND 4A



**Proposal for:
SAFCA SREL REACH 2, 3 AND 4A**

Bid Date: 3/12/2009
Time: 2:00PM

From
NORDIC INDUSTRIES, INC
1437 Furneaux Road Marysville, CA 95901

(530) 742-7124

Fax:

SAFCA

Bid-Item	Description	Quantity	Unit	Unit Price	Total Price
E40	BOLLARDS	16.00	EA	225.0000	3,600.00
E41	HIBERNACULA	12.00	EA	5,000.0000	60,000.00
E42	SEEDING-TYPE 1	67.00	AC	1,600.0000	107,200.00
E46	SHEETPILE COFFERDAM	80.00	LF	700.0000	56,000.00
E47	GGs/DRAIN CANAL WATER SUPPLY	1.00	LS	17,500.0000	17,500.00
E48	MOODY DITCH OUTLET STRUCTURE	1.00	LS	12,500.0000	12,500.00
E49	SEDIMENTATION BASIN DRAIN OUTLET	1.00	LS	7,500.0000	7,500.00
E50	SEDIMENTATION BASIN WEIR	2.00	EA	6,000.0000	12,000.00
E51	PRICHARD CONCRETE VAULT CONNECTION	1.00	LS	50,000.0000	50,000.00
E52	GAS LINE GGS STA 30+00	1.00	LS	7,500.0000	7,500.00
E53	GAS LINE GGS STA 55+00	1.00	LS	8,500.0000	8,500.00
E54	PUMPING PLANT 2 FDX	63,000.00	CY	1.7500	110,250.00
				Total:	4,631,562.00

F SREL REACH 4B (PLAN VOLUME 3B)

F01	MOB AND DEMOB	1.00	LS	85,000.0000	85,000.00
F02	SWPPP	1.00	LS	7,500.0000	7,500.00
F03	TEMP PROTECTIVE FENCING	1,000.00	LF	1.0000	1,000.00
F04	SILT FENCING	5,000.00	LF	1.0000	5,000.00
F05	CLEAR AND GRUB	23.90	AC	500.0000	11,950.00
F06	STRIPPING	23.90	AC	1,500.0000	35,850.00
F07	MOWING AND DISCING	16.50	AC	2,250.0000	37,125.00
F08	DEMOLITION	1.00	LS	7,500.0000	7,500.00
F09	EXC STABILITY BERM	11,400.00	CY	6.0000	68,400.00
F10	FOUNDATION AND MISC EXCAVATION	52,900.00	CY	2.0000	105,800.00
F11	RANDOM FILL	330,300.00	CY	2.0000	660,600.00
F12	LEVEE EMBANKMENT	161,000.00	CY	2.5000	402,500.00
F14	EROSION CONTROL SEEDING	43.80	AC	1,600.0000	70,080.00
F15	CLASS 2 AGG BASE	4,000.00	TON	17.5000	70,000.00
F16	ASPH CONCRETE PAVING	100.00	TON	120.0000	12,000.00
F17	UNSUITABLE DEBRIS	1,000.00	CY	6.0000	6,000.00

√ = Locked Bid-Item

! = Zero Total Price

Run by: Calvin Barnhill Estimator: Dave Culbertson

For Job: SAFCA SREL REACH 2, 3 AND 4A



Proposal for:
SAFCA SREL REACH 2, 3 AND 4A

Bid Date: 3/12/2009
 Time: 2:00PM

From
 NORDIC INDUSTRIES, INC
 1437 Furneaux Road Marysville, CA 95901

(530) 742-7124

Fax:

SAFCA

Bid-Item	Description	Quantity	Unit	Unit Price	Total Price
F18	DRAIN INLET TYPE F W/GRATE	2.00	EA	1,750.0000	3,500.00
F19	24" RCP	140.00	LF	48.0000	6,720.00
F20	RSP-TYPE 1, NO.3	19.00	TON	35.0000	665.00
F21	RSP-TYPE 2, FACING	226.00	TON	35.0000	7,910.00
F22	BEDDING MATERIAL	44.00	TON	35.0000	1,540.00
F23	CONSTRUCT INTERIM TERMINATION	1.00	LS	7,500.0000	7,500.00
F24	GAS LINE AT GARDEN HIGHWAY	1.00	LS	3,750.0000	3,750.00
F25	INSPECTION TRENCH	7,800.00	CY	2.0000	15,600.00
F26	DEWATERING	1.00	LS	175,000.0000	175,000.00
Total:					<u>1,808,490.00</u>

G GENERAL PROJECT REQUIREMENTS (VOLUME)

G1	BUILDER'S RISK INSURANCE	1.00	LS	75,000.0000	75,000.00
Total:					<u>75,000.00</u>

Sub-Total For SREL PHASE 1B REACHES 2-4A (PLAN VOLUME 2A)	8,135,995.00
Sub-Total For ROADWAYS AND ROADWAY DRAINAGE (PLAN VOLUME 2A)	472,590.00
Sub-Total For PRIVATE IRRIGATION FACILITY RELOCATION (VOLUME 1, 4, 5B)	759,017.00
Sub-Total For NORTH AIRPORT BORROW SITES 1-4 (PLAN VOLUME 2C)	8,887,440.00
Sub-Total For ELKHORN AND GGS/DRAINAGE CANAL FROM 4B TO 6A (PLAN VOLUME 3A)	4,631,562.00
Sub-Total For SREL REACH 4B (PLAN VOLUME 3B)	1,808,490.00
Sub-Total For GENERAL PROJECT REQUIREMENTS (VOLUME)	75,000.00

GrandTotal: 24,770,094.00

√ = Locked Bid-Item

! = Zero Total Price

Run by: Calvin Barnhill Estimator: Dave Culbertson

For Job: SAFCA SREL REACH 2, 3 AND 4A



Generated by a SharpeSoft Product