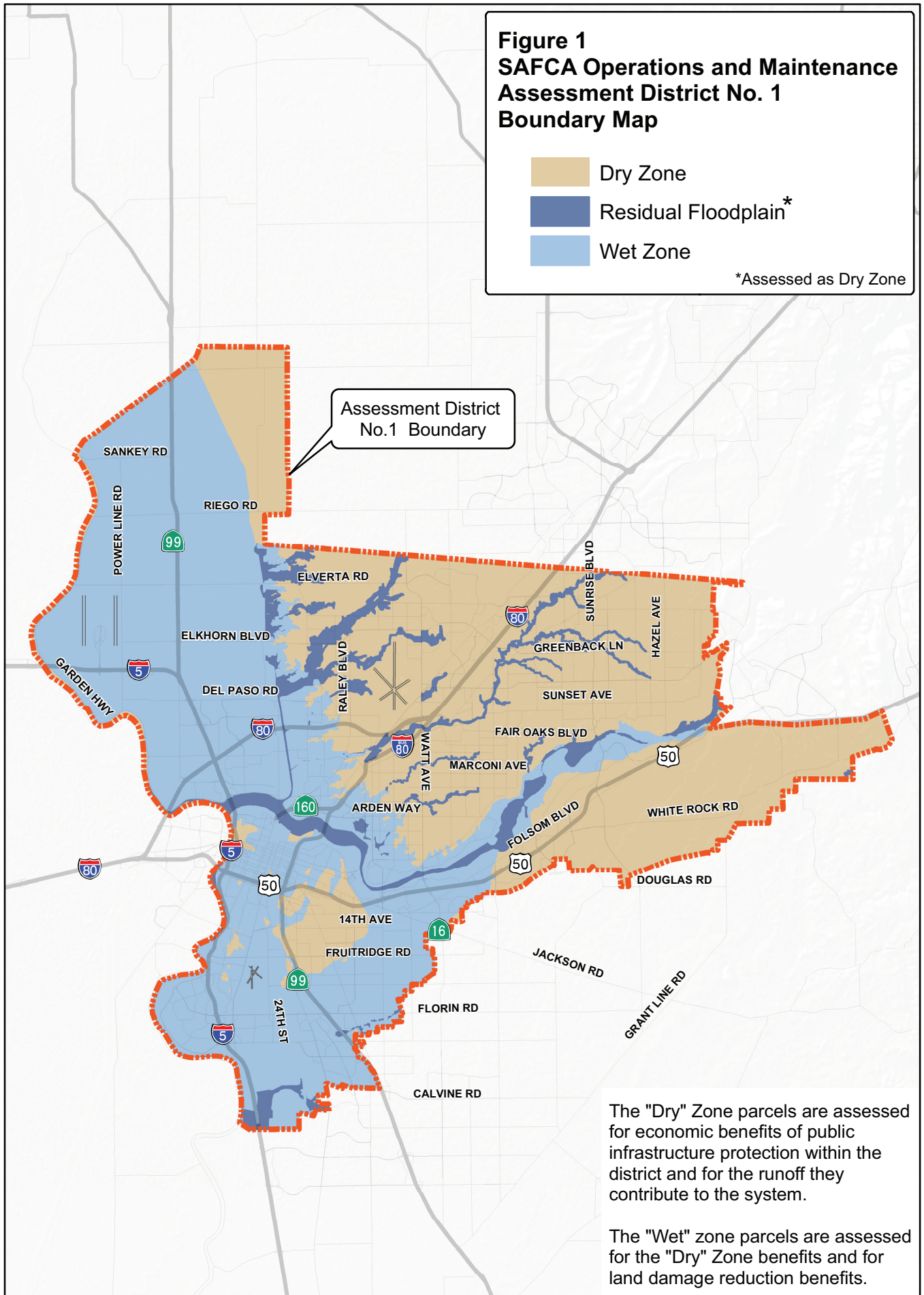


**Figure 1
SAFCA Operations and Maintenance
Assessment District No. 1
Boundary Map**

- Dry Zone
- Residual Floodplain*
- Wet Zone

*Assessed as Dry Zone



The "Dry" Zone parcels are assessed for economic benefits of public infrastructure protection within the district and for the runoff they contribute to the system.

The "Wet" zone parcels are assessed for the "Dry" Zone benefits and for land damage reduction benefits.