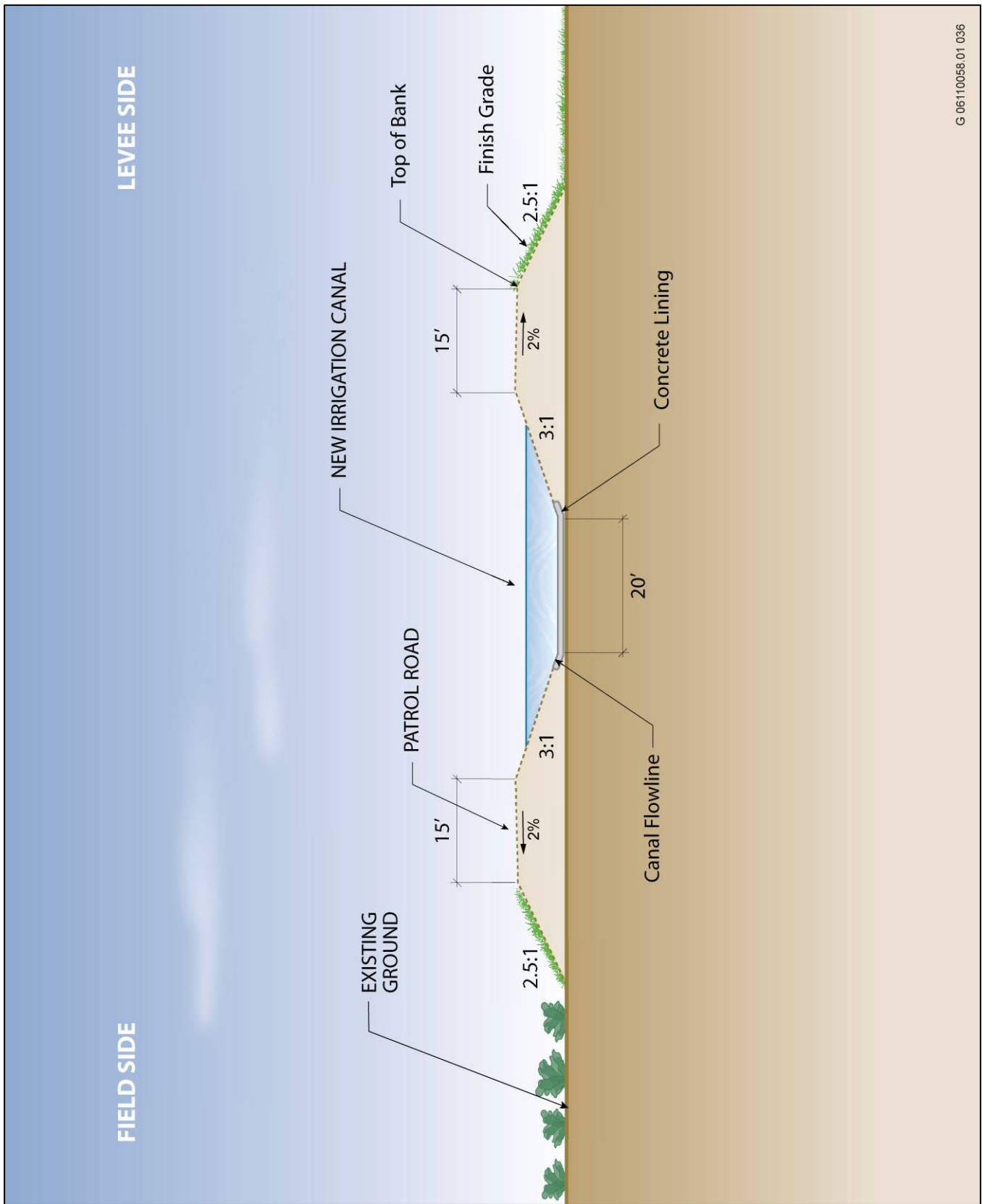


Source: Mead & Hunt 2007, EDAW 2007

Proposed Improvements to Major Irrigation and Drainage Infrastructure (2008-2010 Construction)

Exhibit 2-27

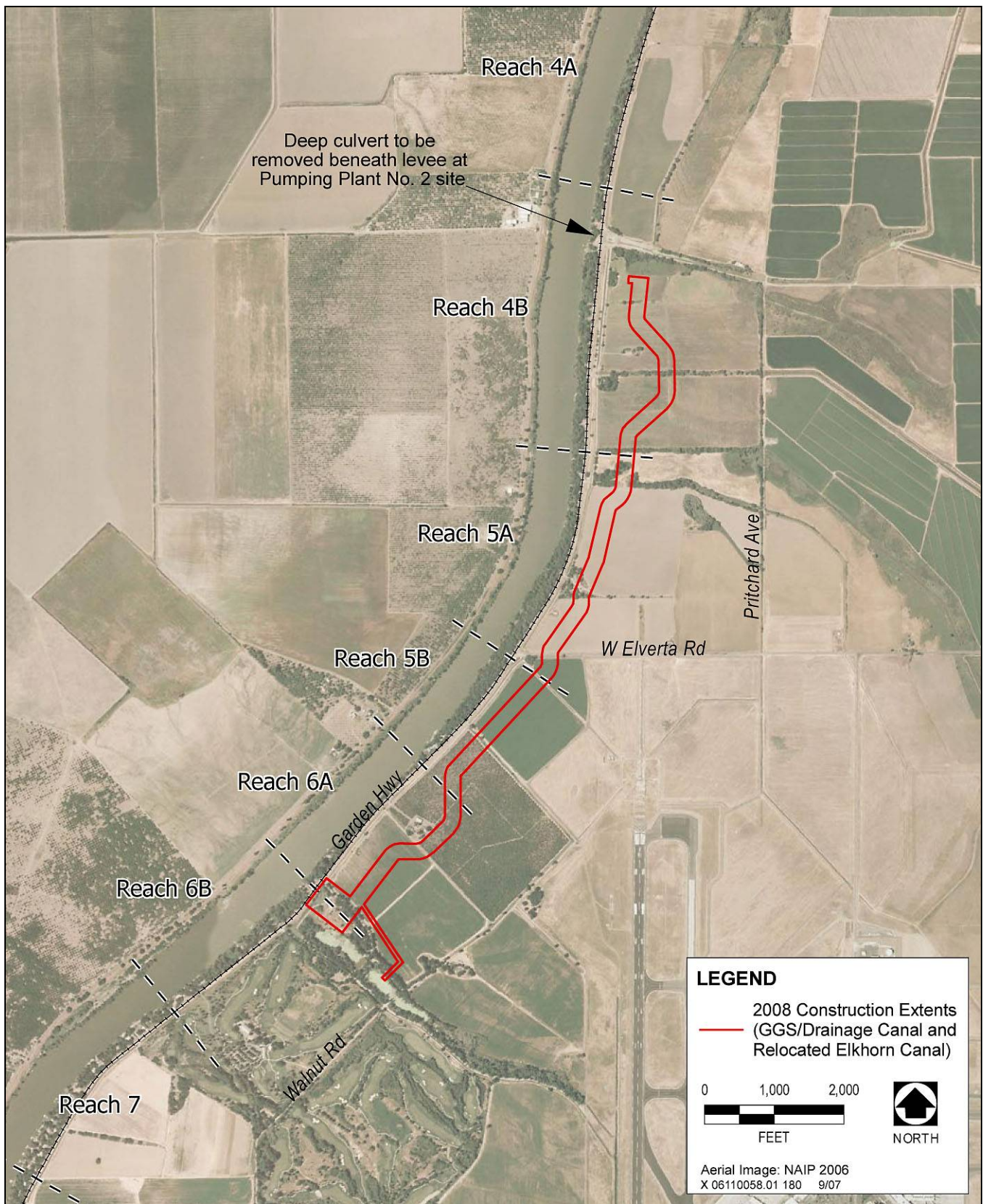


G 06110058.01 036

Source: Mead & Hunt 2007, Adapted by EDAW in 2007

Typical Cross Section of the Proposed Elkhorn Canal Replacement between the North Drainage Canal and Elkhorn Reservoir (2008 Construction)

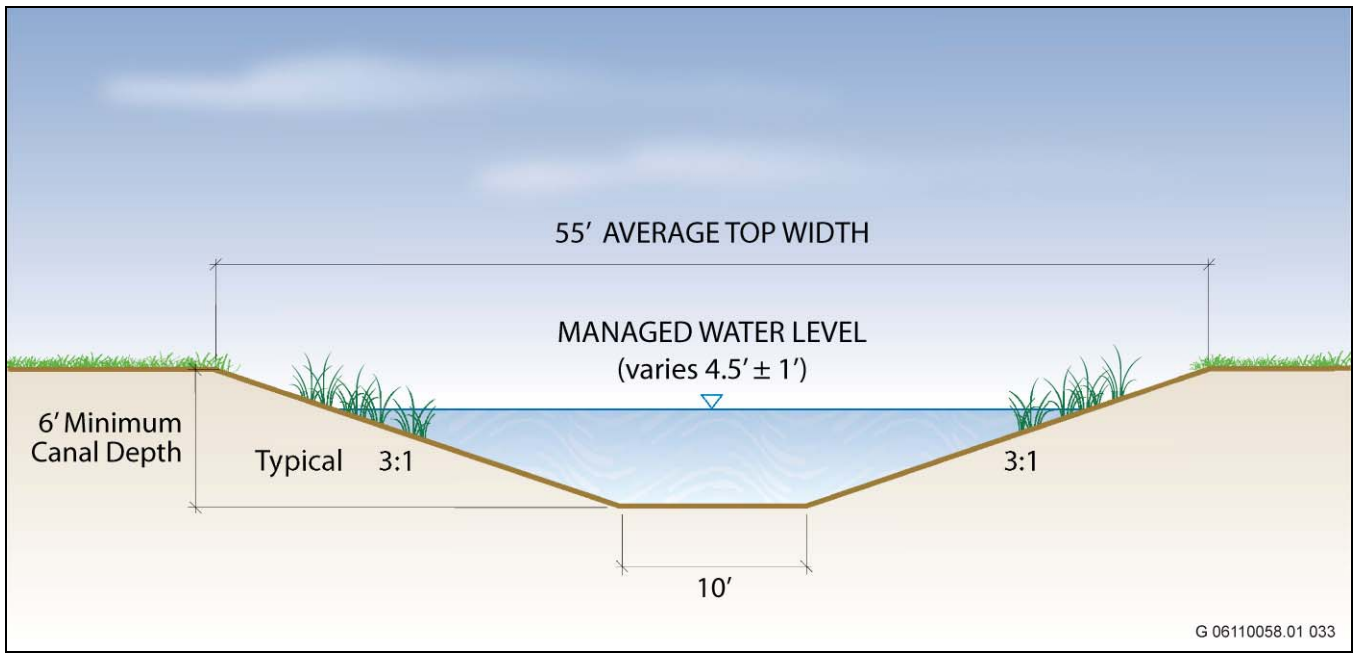
Exhibit 2-28



Source: Mead & Hunt 2007, EDAW 2007

Proposed Alignments of the Relocated Elkhorn Canal and the New GGS/Drainage Canal between the North Drainage Canal and Elkhorn Reservoir (2008 Construction)

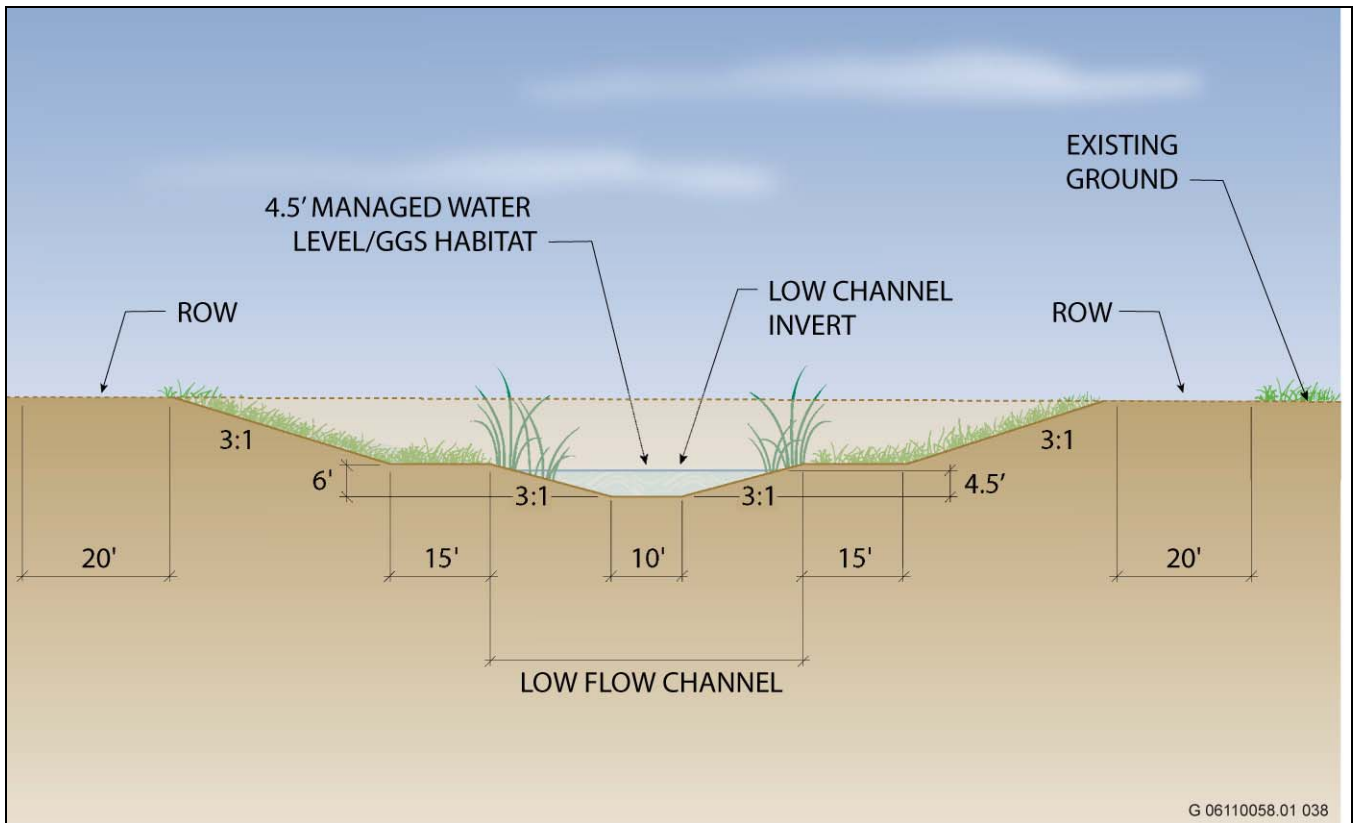
Exhibit 2-29



Source: Mead & Hunt 2007, Adapted by EDAW in 2007

Typical Cross Section of the New GGS/Drainage Canal North of Reservoir Road (2008 Construction)

Exhibit 2-30



Source: Mead & Hunt, Adapted by EDAW in 2007

Typical Cross Section of the New GGS/Drainage Canal South of Teal Bend Golf Club and North of I-5 (2009 Construction)

Exhibit 2-31