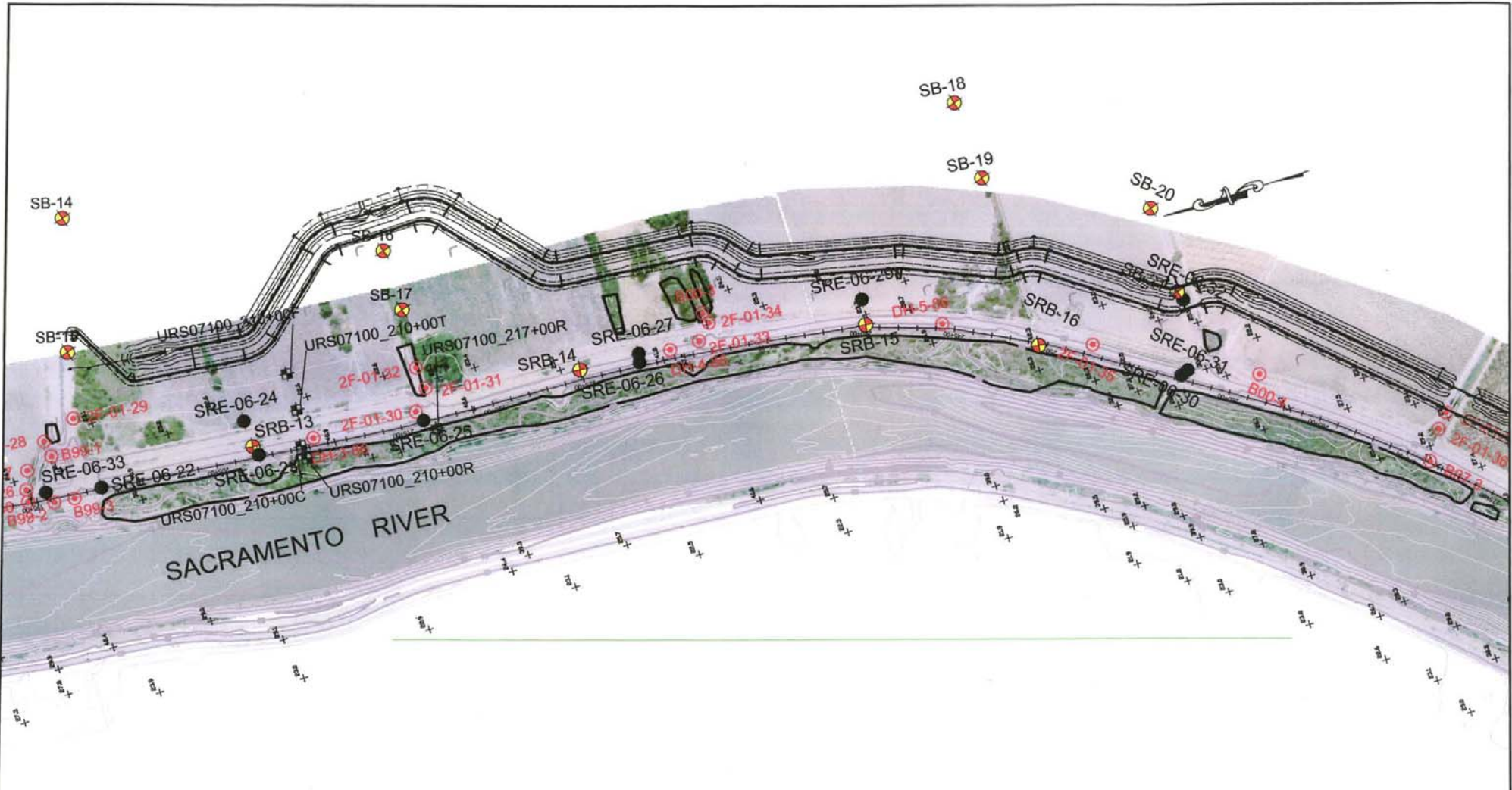


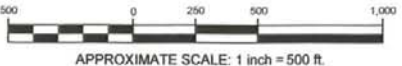
ATTACHMENT C

PROPOSED CANAL PLAN



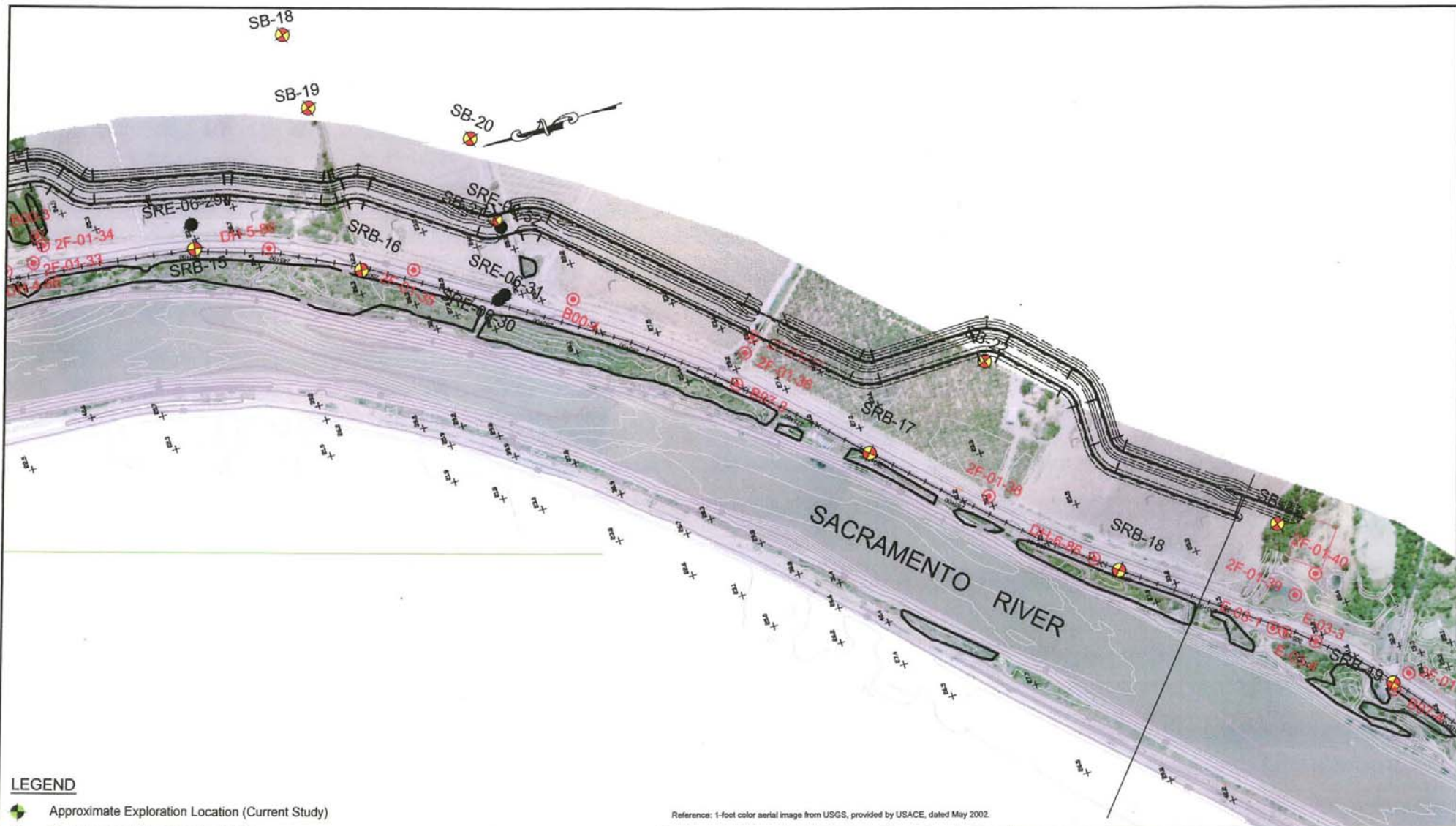
LEGEND

- Approximate Exploration Location (Current Study)
- Approximate URS Exploration (2007)
- Approximate Exploration Location (KA 2006)
- Approximate Exploration Location (KA 2005)
- Approximate Exploration Location (Previous Studies)



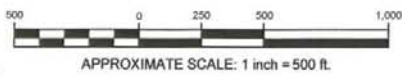
Reference: 1-foot color aerial image from USGS, provided by USACE, dated May 2002.

KLEINFELDER		BORING LOCATION MAP SACRAMENTO RIVER EAST LEVEE NATOMAS BASIN EVALUATION SACRAMENTO AND SUTTER COUNTIES, CALIFORNIA	PLATE
Drawn By: D. ROSS Project No.: 58824/PSRE	Date: 10/21/2005 Filename: 58824SAC2.dwg		1



LEGEND

- Approximate Exploration Location (Current Study)
- Approximate URS Exploration (2007)
- Approximate Exploration Location (KA 2006)
- Approximate Exploration Location (KA 2005)
- Approximate Exploration Location (Previous Studies)



Reference: 1-foot color aerial image from USGS, provided by USACE, dated May 2002.

KLEINFELDER		BORING LOCATION MAP SACRAMENTO RIVER EAST LEVEE NATOMAS BASIN EVALUATION SACRAMENTO AND SUTTER COUNTIES, CALIFORNIA	PLATE 2
Drawn By: D. ROSS Project No.: 58824/PSRE	Date: 10/21/2005 Filename: 58824SAC2.dwg		